



145 MHz IF Saw Filter 14 MHz Bandwidth

Part Number: AM145S616



ANATECH ELECTRONICS INC
RF & Microwave Filters & Products

Parameters Description	Unit	Minimum	Typical	Maximum
Center Frequency (Fo)	MHz	144.85	145.00	145.15
Insertion Loss at Fo	dB	-	18.0	20.0
Passband Ripple Variation	dB	-	0.70	1.00
Group Delay Variation	nsec	-	70	150
Absolute Delay at Fo	µsec	-	1.58	-
Temperature Coefficient	ppm/°C	-	14.40	-
Bandwidth at -1.0 dB	MHz	-	14.86	-
Bandwidth at -3.0 dB	MHz	14.70	16.75	-
Bandwidth at -40.0 dB	MHz	-	-72	16.90
Ultimate Rejection	dB	50	55	-

Parameters Description	Unit	Minimum	Typical	Maximum
Operation Temperature Range	°C	-	+25	-
Storage Temperature Range	°C	-40	-	+85
Maximum DC Voltage	V	-	-	10
Maximum Input Power	dBm	-	-	10
Source Impedance (Single Ended) ₁	Ω	-	50	-
Load Impedance (Single Ended) ₁	Ω	-	50	-
Package Size and Type	13.3 x 6.5 x 1.8 mm		V	



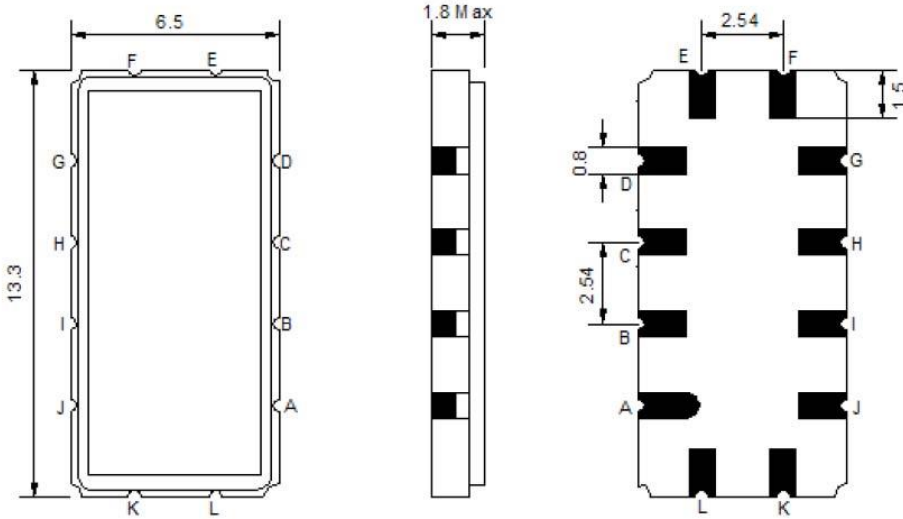
145 MHz IF Saw Filter 14 MHz Bandwidth

Part Number: AM145S616



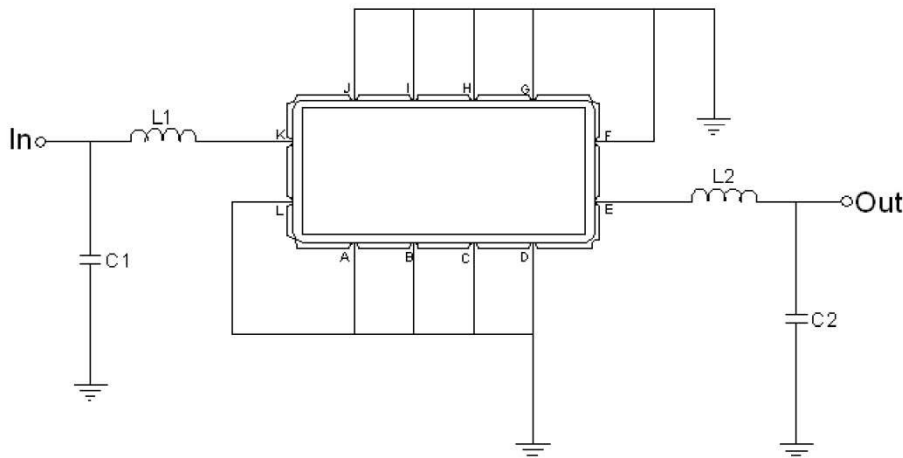
ANATECH ELECTRONICS INC
RF & Microwave Filters & Products

Outline Drawing:



Pin Description	
Ground	A B C D F G H I J L
Input	K
Output	E

Testing Environment:



Test Fixture & Values	
Input	L1 = 33 nH, C1 = 8 pF
Output	L2 = 33 nH, C2 = 8 pF
Source/Load Impedance	50 Ω



145 MHz IF Saw Filter 14 MHz Bandwidth

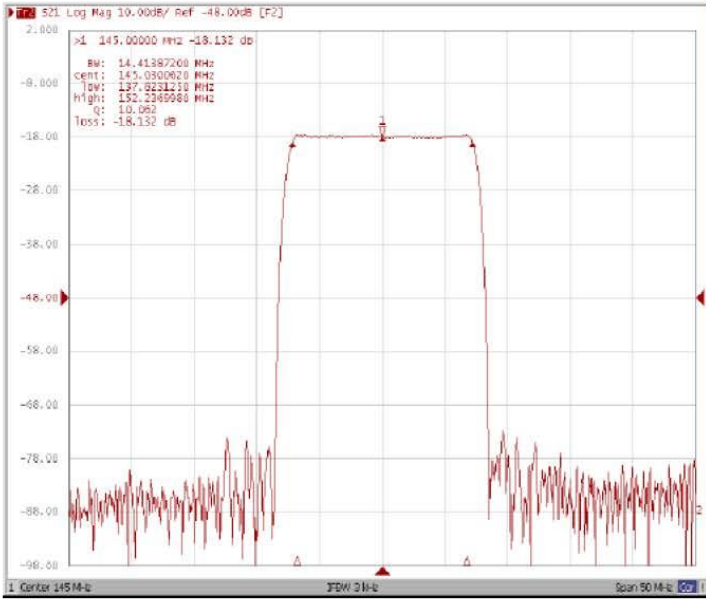
Part Number: AM145S616



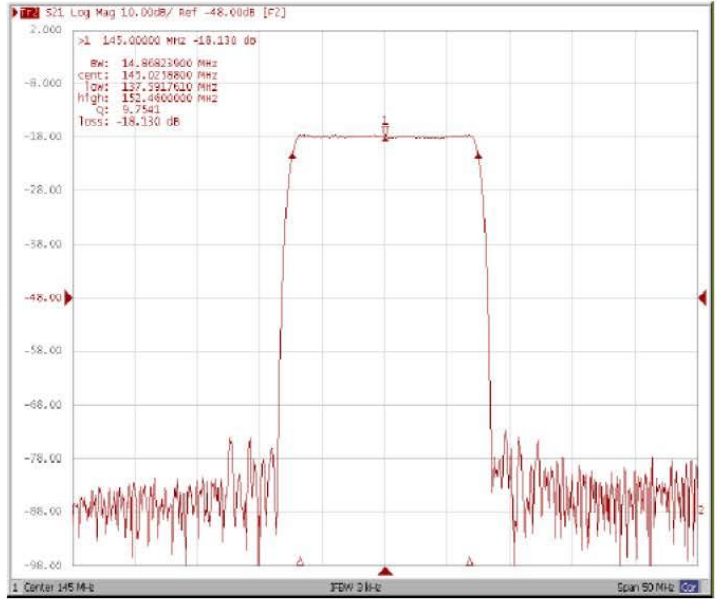
ANATECH ELECTRONICS INC
RF & Microwave Filters & Products

Frequency Response:

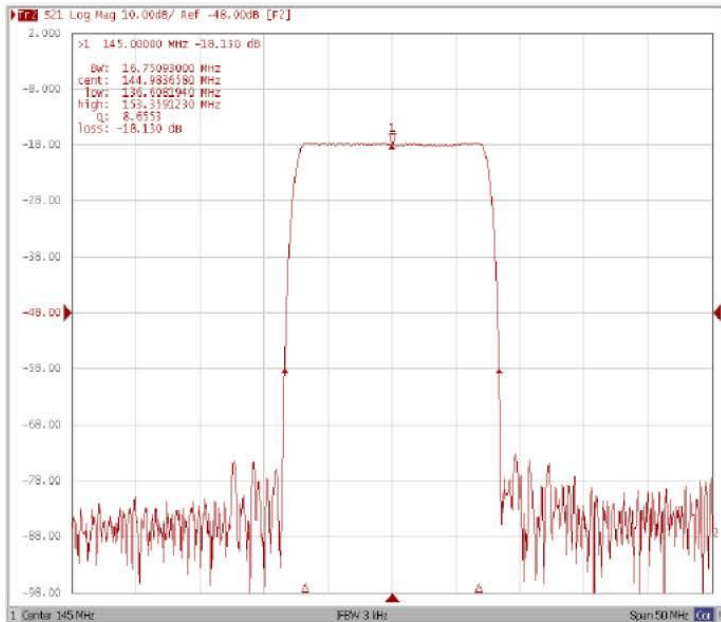
Bandwidth at -1.0 dB



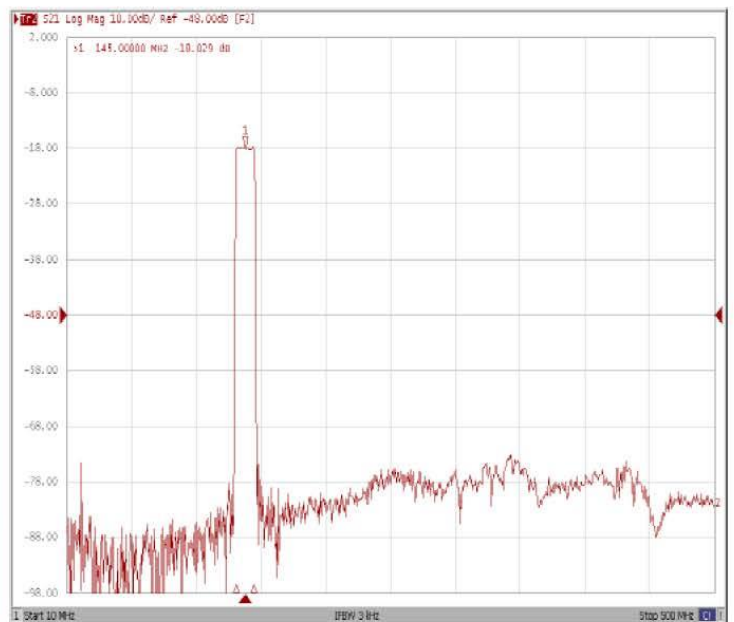
Bandwidth at -3.0 dB



Bandwidth at -40.0 dB



Wide-Band





145 MHz IF Saw Filter 14 MHz Bandwidth

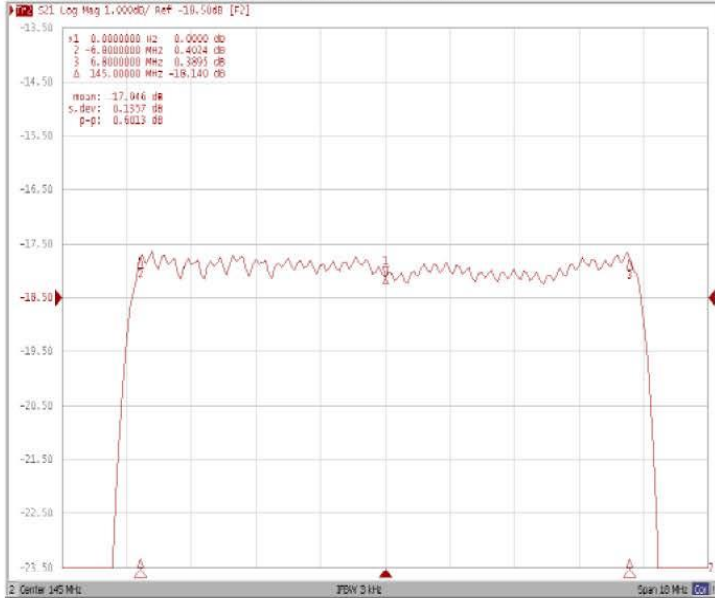
Part Number: AM145S616



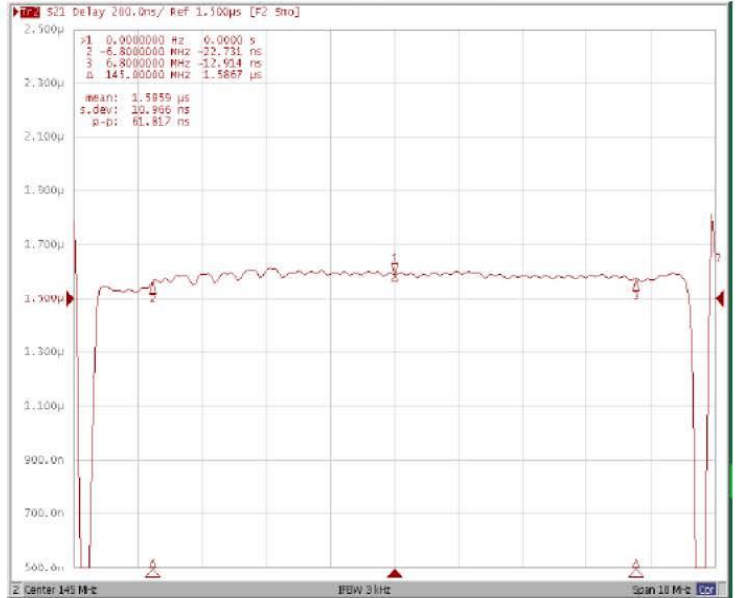
ANATECH ELECTRONICS INC
RF & Microwave Filters & Products

Frequency Response:

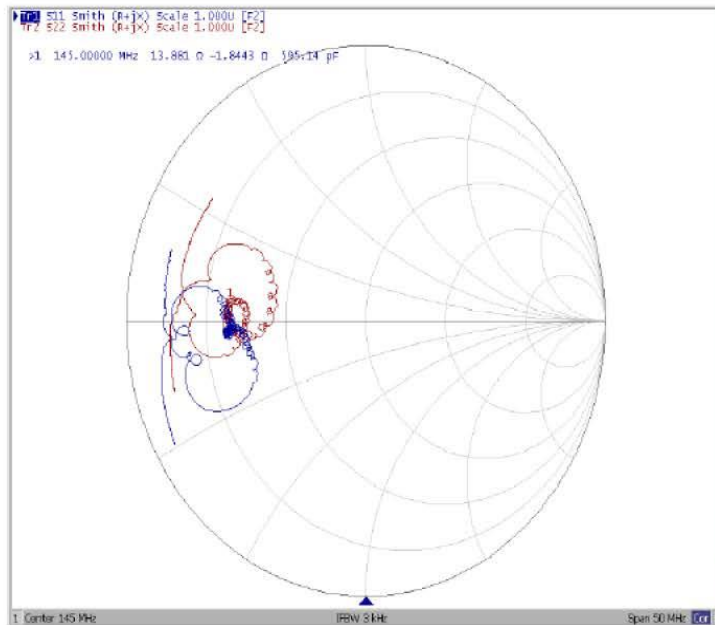
Ripple Variation



Group Delay Variation



Smith Chart



SWR

