



174 MHz IF Saw Filter
Part Number: AM147S722



Parameters Description	Unit	Minimum	Typical	Maximum
Center Frequency (Fo)	MHz	173.80	174.00	174.20
Insertion Loss at Fo	dB	-	13.97	16.00
Amplitude Ripple Variation at Fo ± 3.9 MHz	dB _{p-p}	-	0.30	0.80
Group Delay Variation at Fo ± 3.9 MHz	nsec	-	30	80
Absolute Delay at Fo	µsec	-	0.73	-
Temperature Coefficient	ppm/°C	-	-18	-
Bandwidth at -1.0 dB	MHz	10.00	10.50	-
Bandwidth at -3.0 dB	MHz	-	11.50	-
Bandwidth at -40.0 dB	MHz	-	15.60	16.00
Lower Sidelobe	dB	40	47	-
Upper Sidelobe	dB	40	47	-

Parameters Description	Unit	Minimum	Typical	Maximum
Operation Temperature Range	°C	-30	-	+80
Storage Temperature Range	°C	-40	-	+55
Maximum DC Voltage	V	-	-	10
Maximum Input Power	dBm	-	-	10
Source Impedance (Single Ended) ₁	Ω	-	50	-
Load Impedance (Single Ended) ₁	Ω	-	50	-
Package Size and Type	7.0 x 5.0 x 1.8 mm		S1	

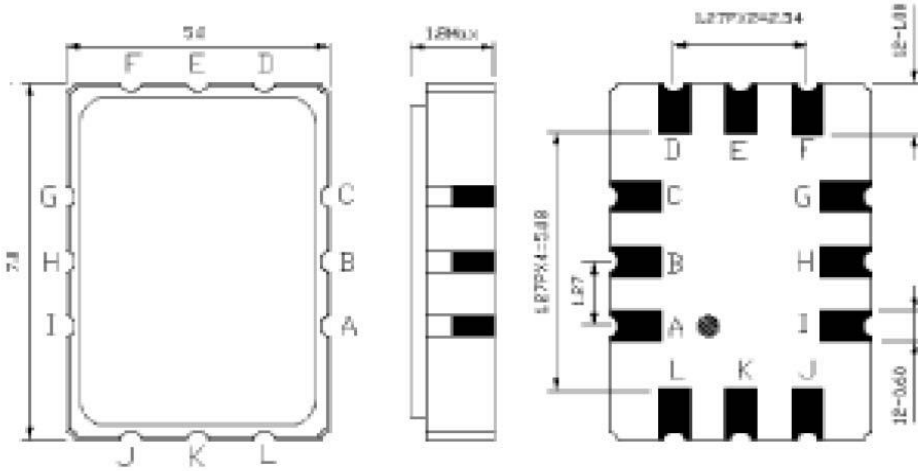


174 MHz IF Saw Filter

Part Number: AM147S722

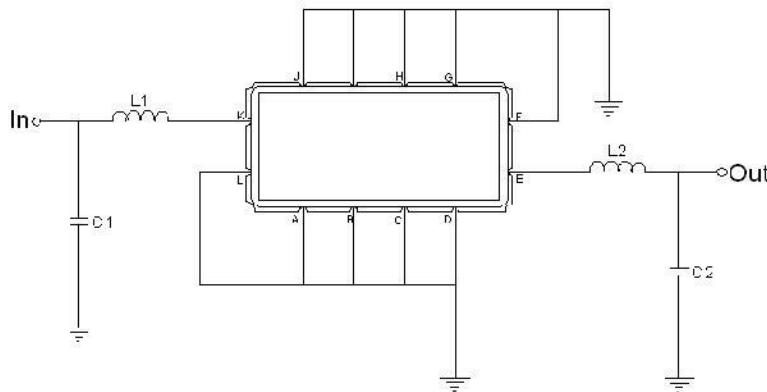


Outline Drawing:



Pin Description	
Ground	A B C E F G H I K L
Input	J
Output	D

Testing Environment:



Test Fixture & Values	
Input	L1=56 nH , C1=36 pF
Output	L1=56 nH , C2=36 pF
Source/Load Impedance	50 Ω



ANATECH ELECTRONICS INC
RF & Microwave Filters & Products

174 MHz IF Saw Filter

Part Number: AM147S722

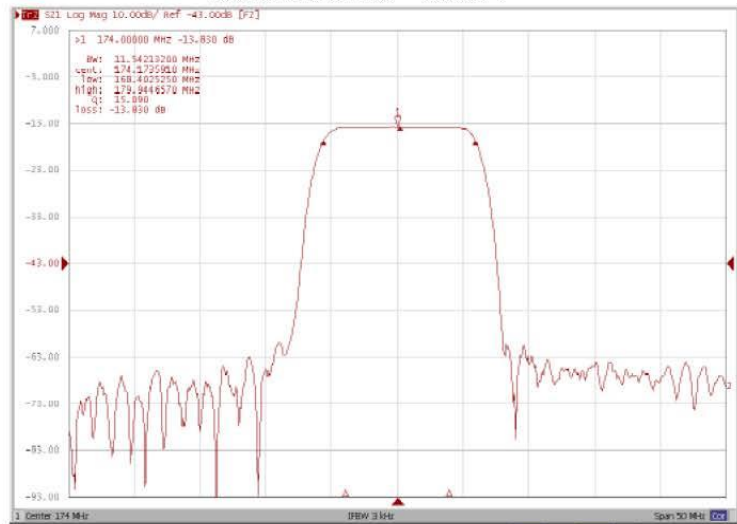


Frequency Response:

Bandwidth at -1.0 dB



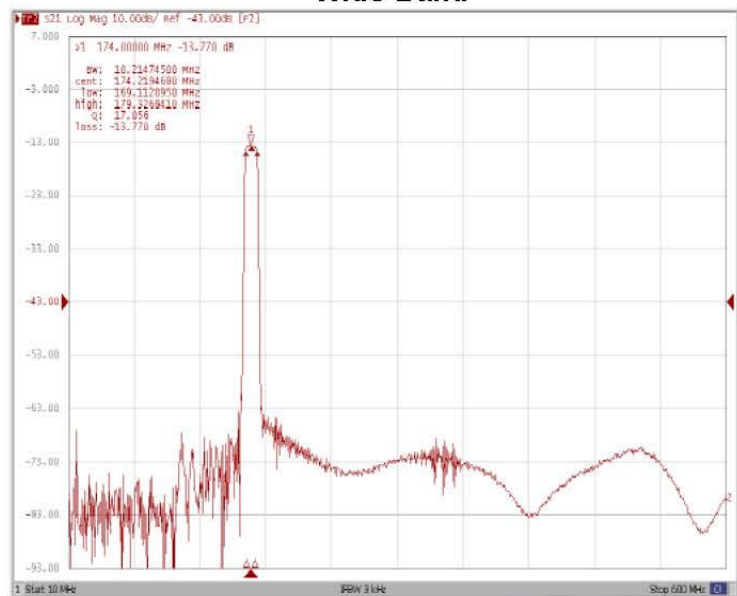
Bandwidth at -3.0 dB



Bandwidth at -40.0 dB



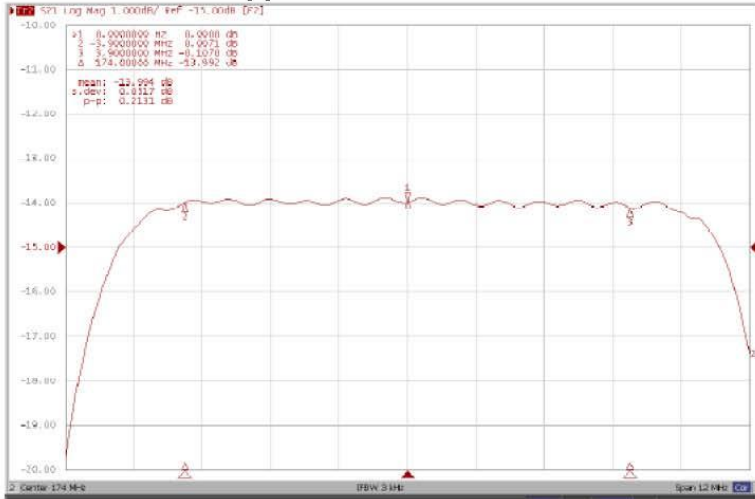
Wide-Band



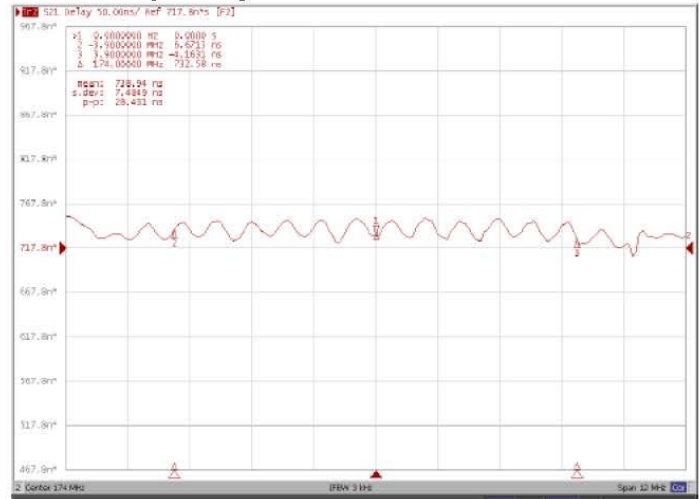


Frequency Response:

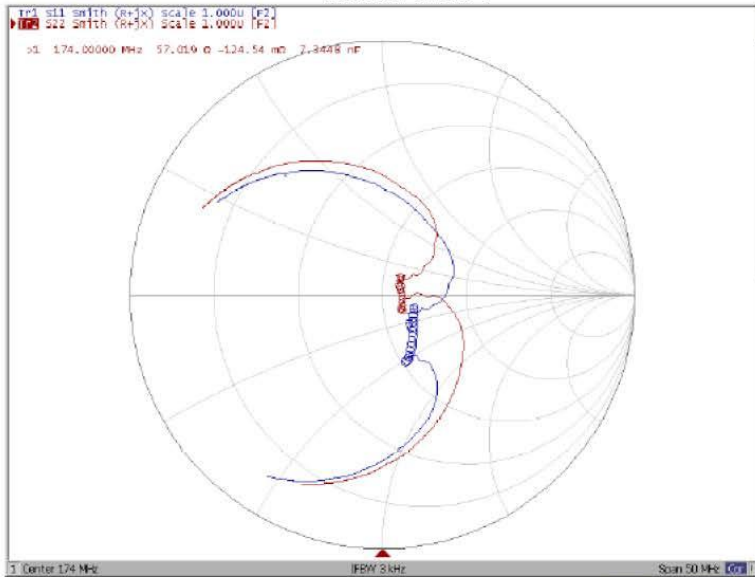
Ripple Variation Fo±3.9MHz



Group Delay Variation Fo±3.9MHz



Smith Chart



SWR

