



150 MHz IF Saw Filter 1 MHz Bandwidth

Part Number: AM150S617

ANATECH ELECTRONICS INC
RF & Microwave Filters & Products



Parameters Description	Unit	Minimum	Typical	Maximum
Center Frequency (Fo)	MHz	149.90	150.0	150.10
Insertion Loss at Fo	dB	-	22.0	25.0
Phase Linearity	Deg	-	2.00	5.00
Group Delay Variation	nsec	-	150	200
Absolute Delay at Fo	usec	-	2.45	-
Passband Ripple Variation	dB	-	0.35	0.70
Bandwidth at -1.0 dB	MHz	1.26	1.31	-
Bandwidth at -3.0 dB	MHz	1.50	1.54	-
Bandwidth at -30.0 dB	MHz	-	2.22	2.26
Ultimate Rejection	dB	35	45	-
Ambient Temperature	°C	-	25	-
Substrate Material	Qz			

Parameters Description	Unit	Minimum	Typical	Maximum
Operation Temperature Range	°C	-30	-	+80
Storage Temperature Range	°C	-40	-	+85
Maximum DC Voltage	V	-	-	10
Maximum Input Power	dBm	-	-	10
Source Impedance (Single Ended) ₁	Ω	-	50	-
Load Impedance (Single Ended) ₁	Ω	-	50	-
Package Size and Type	19.0 x 6.5 x 1.8 mm		X	



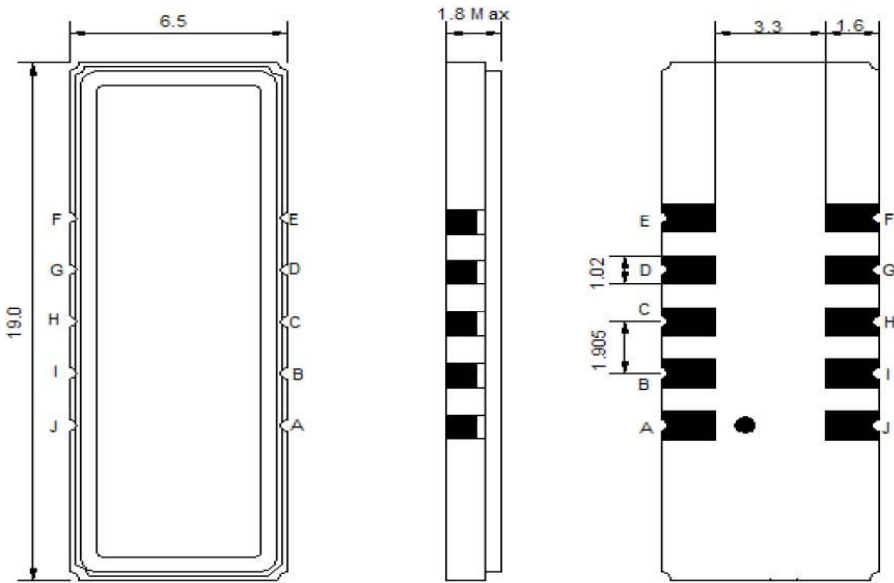
150 MHz IF Saw Filter 1 MHz Bandwidth

Part Number: AM150S617



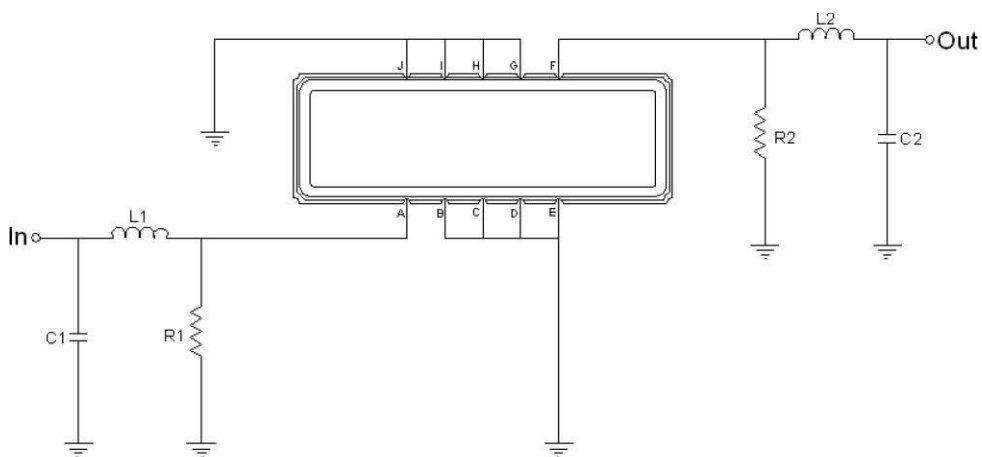
ANATECH ELECTRONICS INC
RF & Microwave Filters & Products

Outline Drawing:



Pin Description	
Ground	BCDEGHIJ
Input	A
Output	F

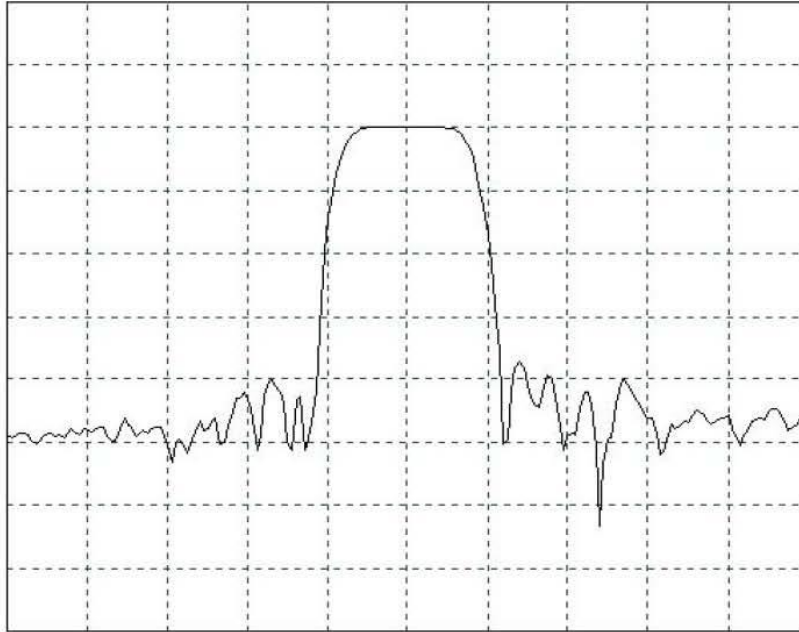
Testing Environment:



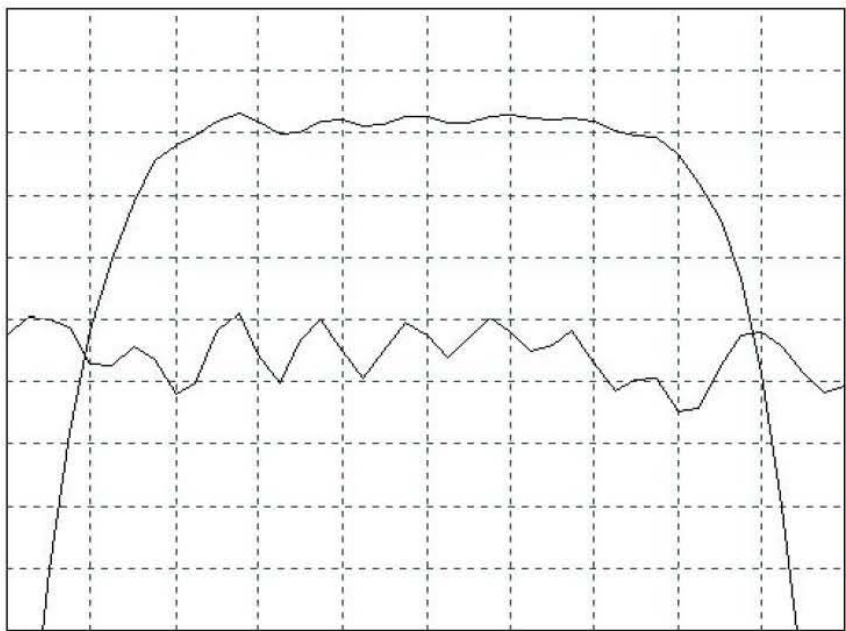
Test Fixture & Values	
Input	L1 = 100 nH , C1 = 39 pF, R1 = 1kΩ
Output	L2 = 66 nH , C2 = 51 pF, R2 = 1kΩ
Source/Load Impedance	50 Ω



Frequency Response:



Horizontal : 1.0 MHz/Div
Vertical : 10 dB/Div



Horizontal : 0.2MHz/Div
Vertical : 1 dB/Div
Vertical : 100 ns/Div