



Electrical specifications

Center Frequency: 1575 MHz
Bandwidth: 2 MHz
Input / Output Impedance: 50 Ohms
Passband: 1574.4-1576.4 MHz
Passband Insertion Loss: 1574.4-1576.4 MHz 1.0 dB
Passband Ripple: 1.0 dB max
Passband Return Loss: 1574.4-1576.4 MHz 15.0 dB
Rejection: 1525.4 MHz 17.0 dB min
Rejection 2: 1625.4 MHz 17.0 dB min
Power Handling: 1 W

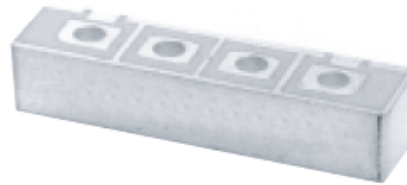
Mechanical

Mounting Method: SMT
Dimensions: 33.58 x 7.061 x 7.85 mm

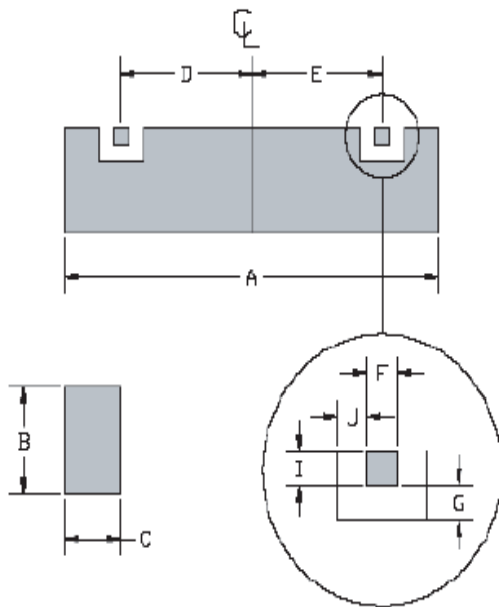
Environmental

Operating Temperature: -40°C to +85°C
Storage Temperature: -50°C to +90°C

This product is RoHs compliant.



Mechanical Drawing



Dim	Nominal (mm)	Tolerance (mm) +/- or max
A	33.580	max
B	7.061	max
C	7.85	max
D	10.807	0.127
E	10.807	0.127
F	2.616	0.127
G	0.609	0.127
I	2.032	0.127
J	0.609	0.127



ANATECH ELECTRONICS INC
RF & Microwave Filters & Products

GPS Ceramic BPF

Part Number: AM1575B316



Response Plot:

