



**Electrical specifications**

**Center Frequency:** 1575 MHz  
**Bandwidth:** 21 MHz  
**Input / Output Impedance:** 50 Ohms  
**Passband:** 1564.4–1585.4 MHz  
**Passband Insertion Loss:** 1564.4–1585.4 MHz 1.8 dB  
**Passband Ripple:** 1.0 dB max  
**Passband Return Loss:** 1564.4–1585.4 MHz 10.0 dB  
**Rejection:** 1435.4 MHz 35.0 dB min  
**Rejection 2:** 1540.4 MHz 7.0 dB max  
**Rejection 3:** 1610.4 MHz 7.0 dB min  
**Rejection 4:** 1715.4 MHz 30.0 dB min  
**Power Handling:** 1 W

**Mechanical**

**Mounting Method:** SMT  
**Dimensions:** 11.75 x 7.55 x 4.50 mm

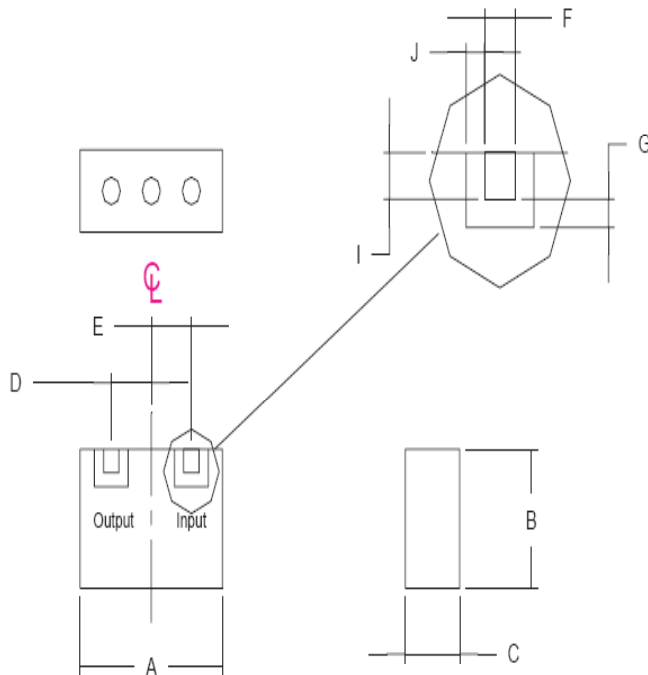
**Environmental**

**Operating Temperature:** -30°C to +70°C  
**Storage Temperature:** -50°C to +90°C

**This product is RoHs compliant.**



**Outline Drawing:**



Dim	Nominal (mm)	Tolerance (mm) +/- or max
A	11.75	Max
B	7.55	Max
C	4.50	Max
D	3.30	0.127
E	3.30	0.127
F	1.27	0.127
G	0.76	0.127
I	1.27	0.127
J	0.76	0.127



**ANATECH ELECTRONICS INC**  
RF & Microwave Filters & Products

# GPS Bandpass

## Part Number: AM1575B510



### Response Plot:

