



**ANATECH ELECTRONICS INC**  
RF & Microwave Filters & Products

# 1575 MHz GPS Balanced RF Saw Filter

**Part Number: AM1575S384**



Parameters Description	Unit	Minimum	Typical	Maximum
Center Frequency (Fo)	MHz	-	1575.42	-
Insertion Loss within 1574.42 ~ 1576.42 MHz	dB	-	1.35	1.90
Amplitude Ripple within 1574.42 ~ 1576.42 MHz	dB <sub>p-p</sub>	-	0.10	0.50
VSWR within 1574.42 ~ 1576.42 MHz	-	-	1.30	1.80
Output Amplitude Balance ( s31 / s21 )	dB	-20	1.3	2.0
Output Phase Balance ( ∠s31 - ∠s21 + 180 )	Degree	-10	1.0	10
<b>Attenuation:</b>				
100 ~ 960 MHz	dB	40	48	-
960 ~ 1425 MHz	dB	35	46	-
1425 ~ 1475 MHz	dB	30	54	-
1475 ~ 1515 MHz	dB	20	39	-
1515 ~ 1525 MHz	dB	17	39	-
1625 ~ 1635 MHz	dB	12	22	-
1635 ~ 1675 MHz	dB	20	24.5	-
1675 ~ 1750 MHz	dB	30	34.5	-
1750 ~ 1805 MHz	dB	35	43.5	-
1805 ~ 1980 MHz	dB	40	50	-
1980 ~ 2400 MHz	dB	35	40	-
2400 ~ 3155 MHz	dB	40	56	-
3455 ~ 6000 MHz	dB	35	55	-



**ANATECH ELECTRONICS INC**  
RF & Microwave Filters & Products

# 1575 MHz GPS Balanced RF Saw Filter

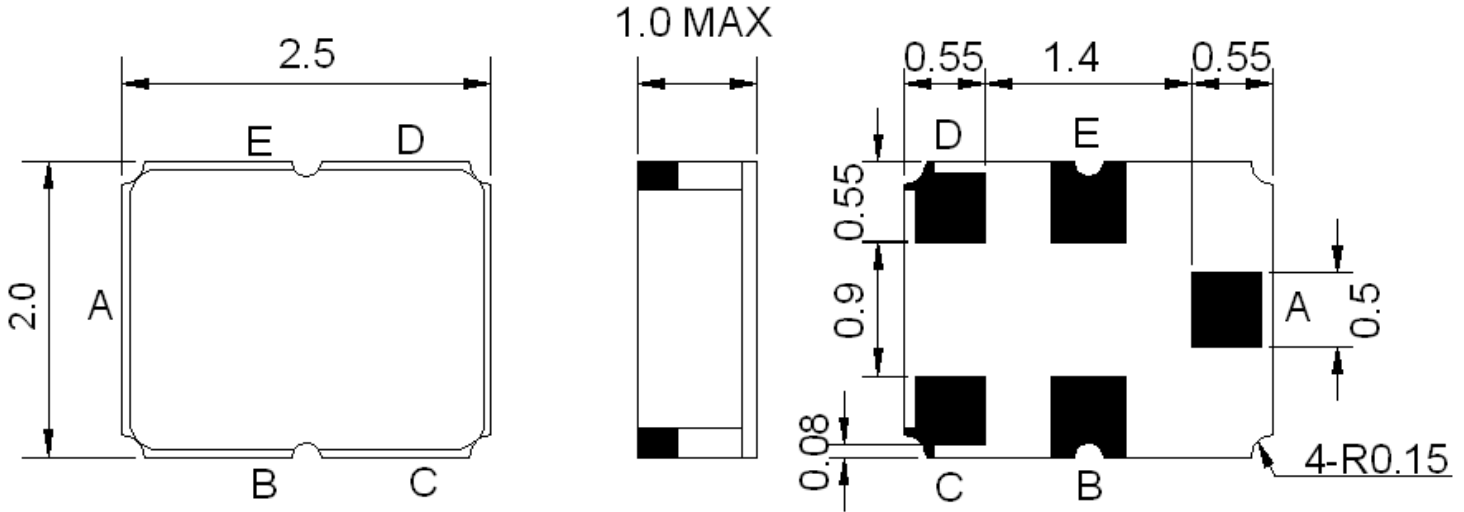
**Part Number: AM1575S384**



Parameters Description	Unit	Minimum	Typical	Maximum
Operation Temperature Range	°C	-40	-	+85
Storage Temperature Range	°C	-55	-	+95
Maximum DC Voltage	V	-	-	3
Maximum Input Power	dBm	-	-	10
Source Impedance (Single Ended) <sub>1</sub>	Ω	-	50	-
Load Impedance (Balanced Ended) <sub>1</sub>	Ω	-	100	-
Package Size and Type	2.5 x 2.0 x 1.0 mm		L1	



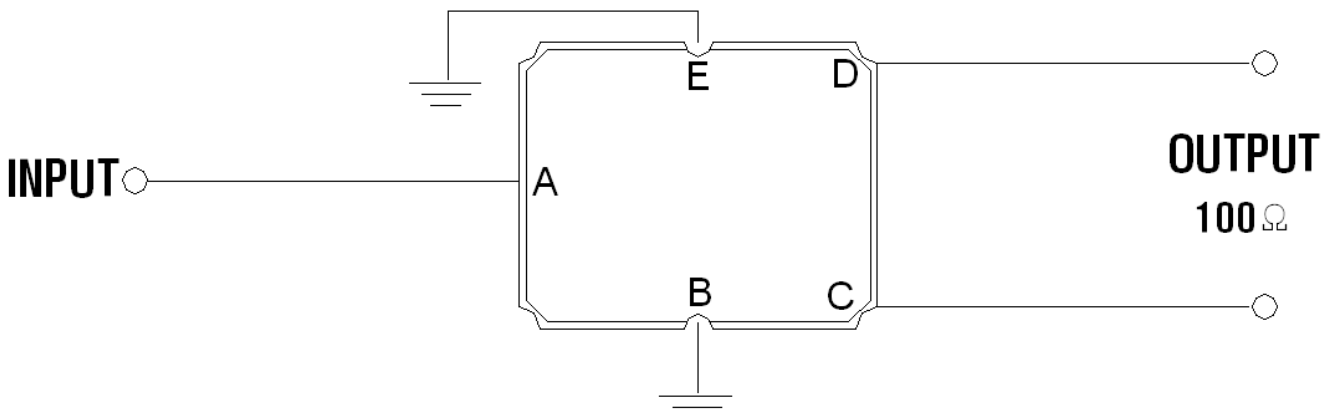
### Outline Drawing:



### Pin Description:

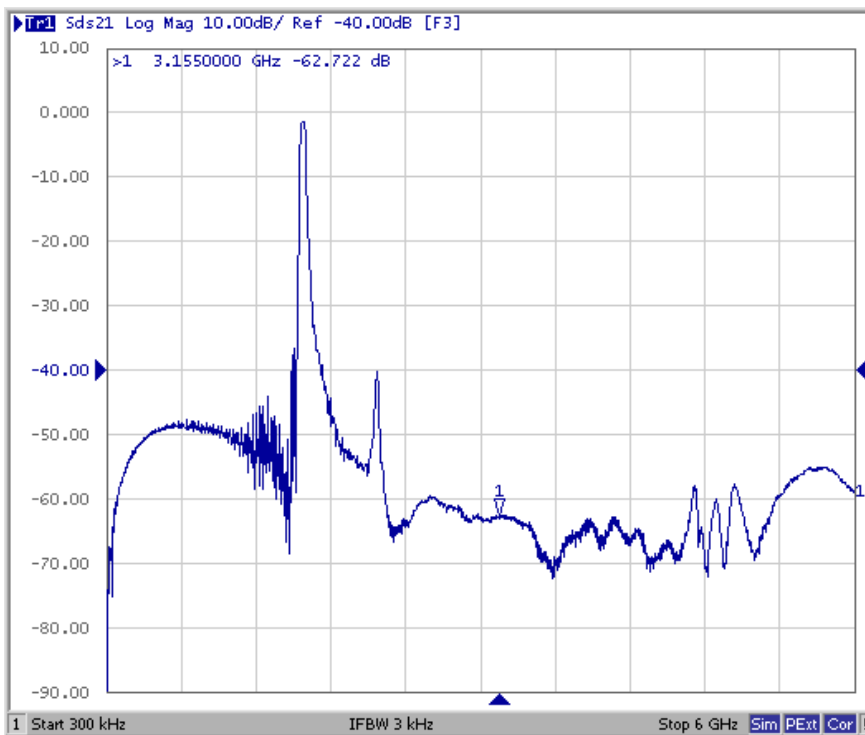
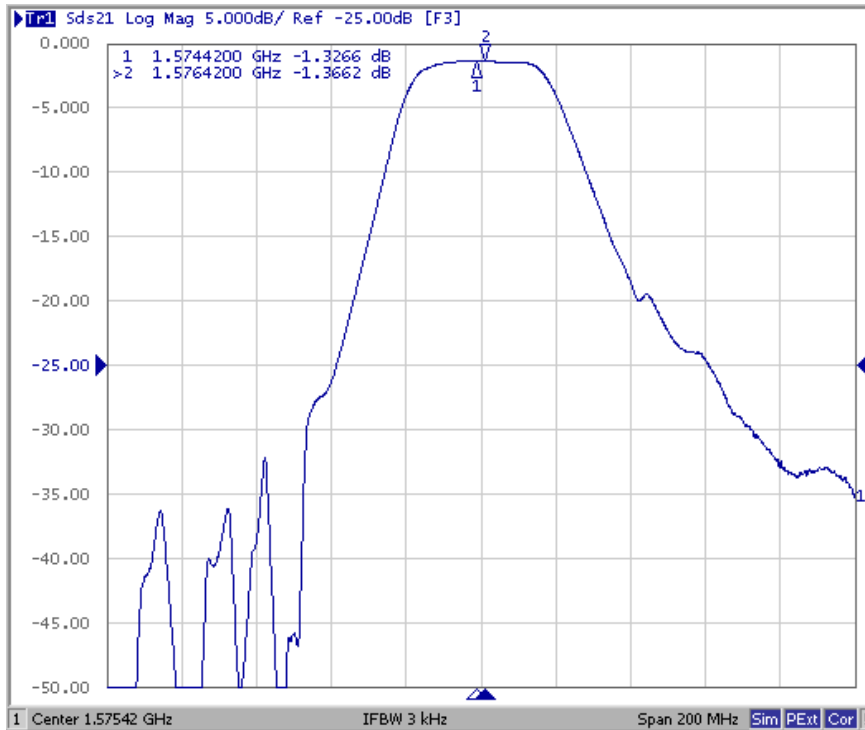
Ground – B E  
Input – A  
Output – C D

### Testing Environment:



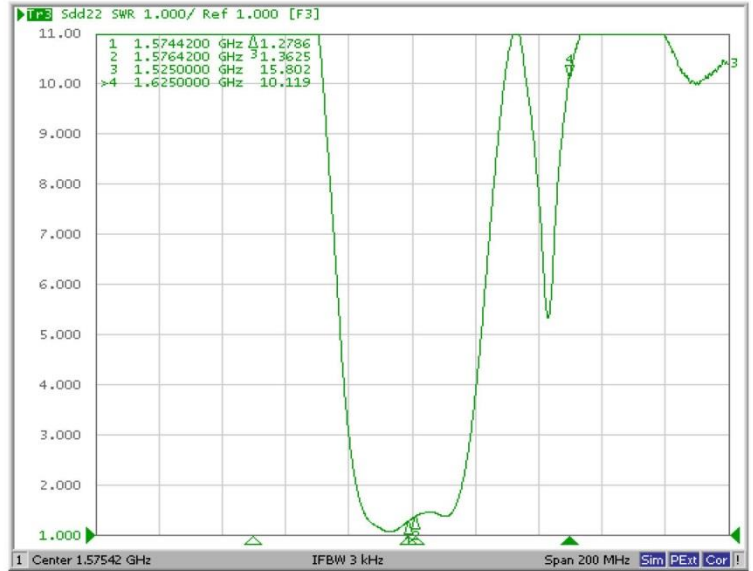
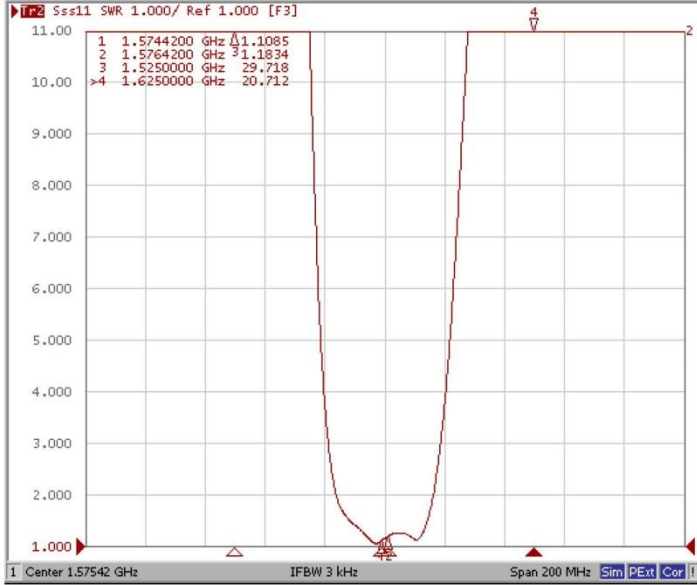


### Response Plot:





### VSWR



### Smith Chart

