



# 160 MHz IF Saw Filter 4 MHz Bandwidth

## Part Number: AM160S619

**ANATECH ELECTRONICS INC**  
RF & Microwave Filters & Products



Parameters Description	Unit	Minimum	Typical	Maximum
Center Frequency (Fo)	MHz	159.85	160.00	160.15
Insertion Loss at Fo	dB	-	21.0	22.50
Passband Ripple Variation	dB	-	0.45	1.00
Group Delay Variation	nsec	-	45	100
Absolute Delay at Fo	µsec	-	1.62	-
Temperature Coefficient	ppm/°C	-	-18	-
Bandwidth at -1.0 dB	MHz	4.40	4.54	-
Bandwidth at -3.0 dB	MHz	-	5.30	-
Bandwidth at -40.0 dB	MHz	-	7.98	8.30
Lower Sidelobe	dB	50	55	-
Upper Sidelobe	dB	50	55	-

Parameters Description	Unit	Minimum	Typical	Maximum
Operation Temperature Range	°C	-30	-	+80
Storage Temperature Range	°C	-40	-	+85
Maximum DC Voltage	V	-	-	10
Maximum Input Power	dBm	-	-	10
Source Impedance (Single Ended) <sub>1</sub>	Ω	-	50	-
Load Impedance (Single Ended) <sub>1</sub>	Ω	-	50	-
Package Size and Type		13.3 x 6.5 x 1.8 mm		V



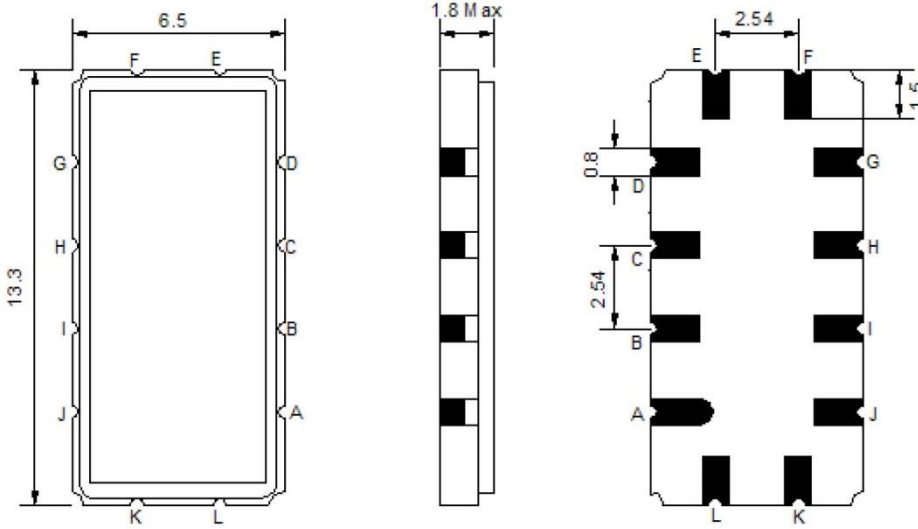
# 160 MHz IF Saw Filter 4 MHz Bandwidth

## Part Number: AM160S619



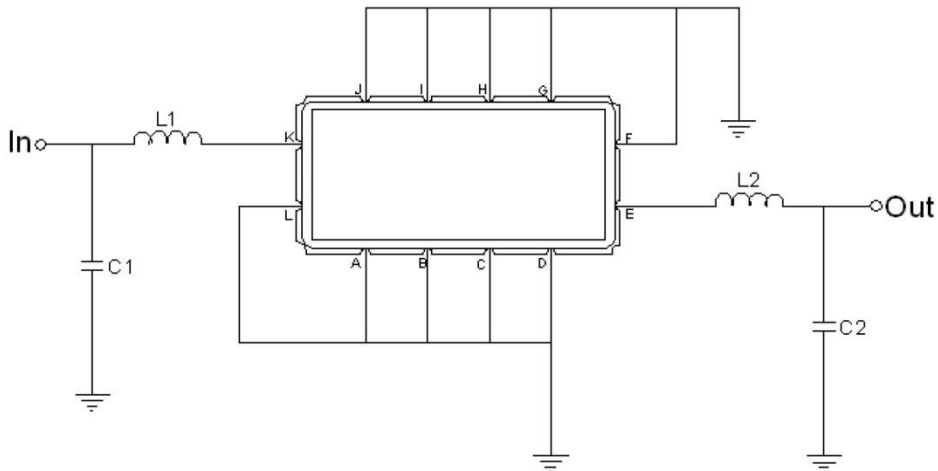
**ANATECH ELECTRONICS INC**  
RF & Microwave Filters & Products

### Outline Drawing:



Pin Description	
Ground	A B C D F G H I J L
Input	K
Output	E

### Testing Environment:



Test Fixture & Values	
Input	L1=27 nH, C1=24 pF
Output	L2=27 nH, C2=24 pF
Source/Load Impedance	50 Ω



# 160 MHz IF Saw Filter 4 MHz Bandwidth

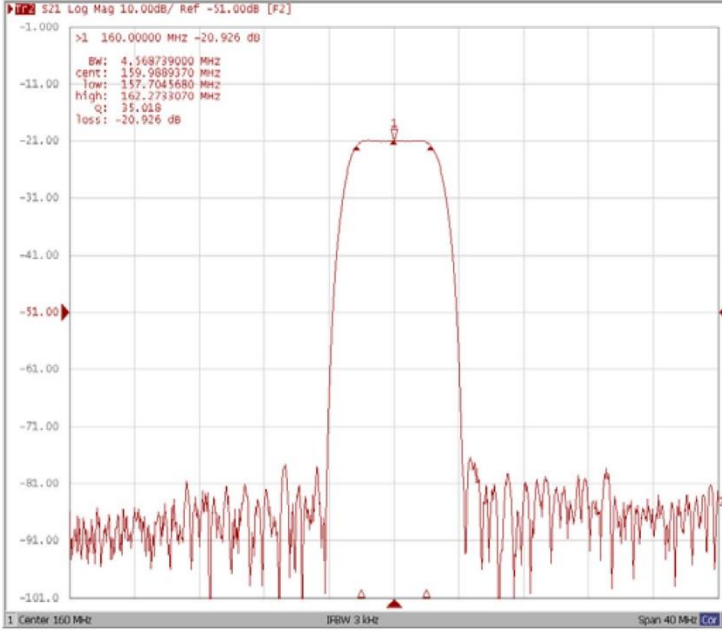
## Part Number: AM160S619



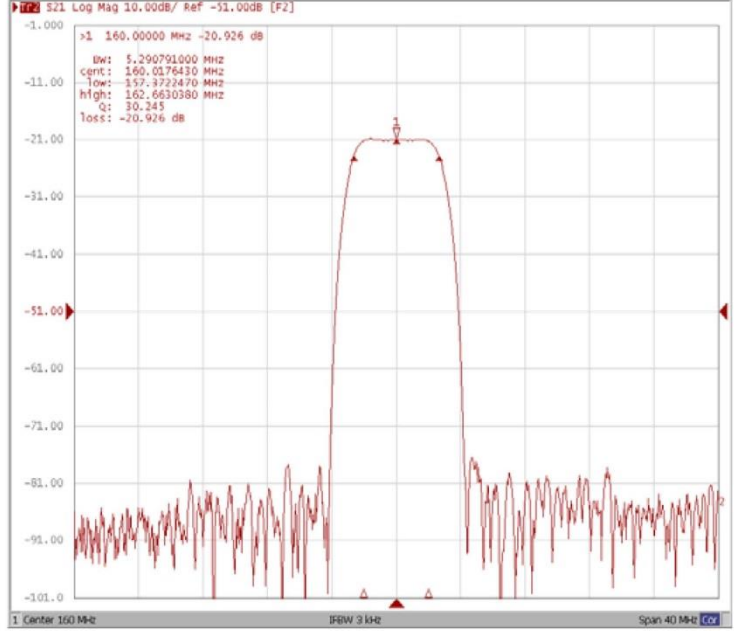
**ANATECH ELECTRONICS INC**  
RF & Microwave Filters & Products

### Frequency Response:

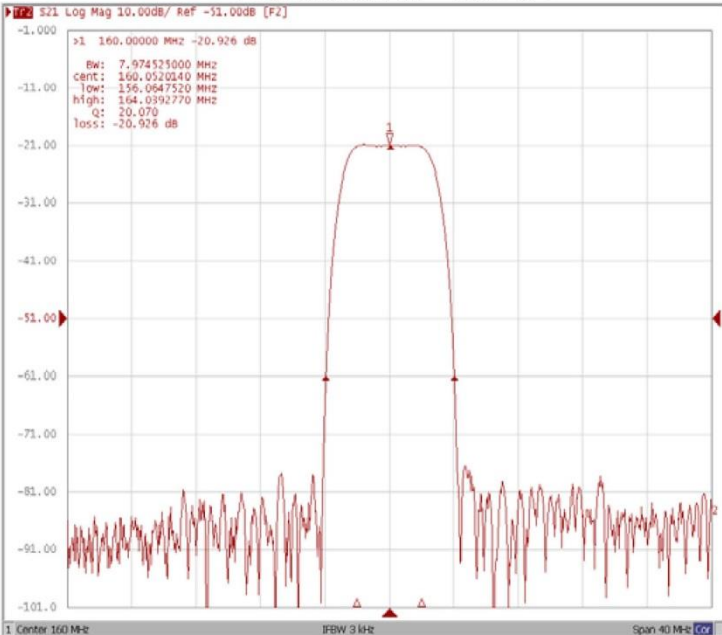
#### Bandwidth at -1.0 dB



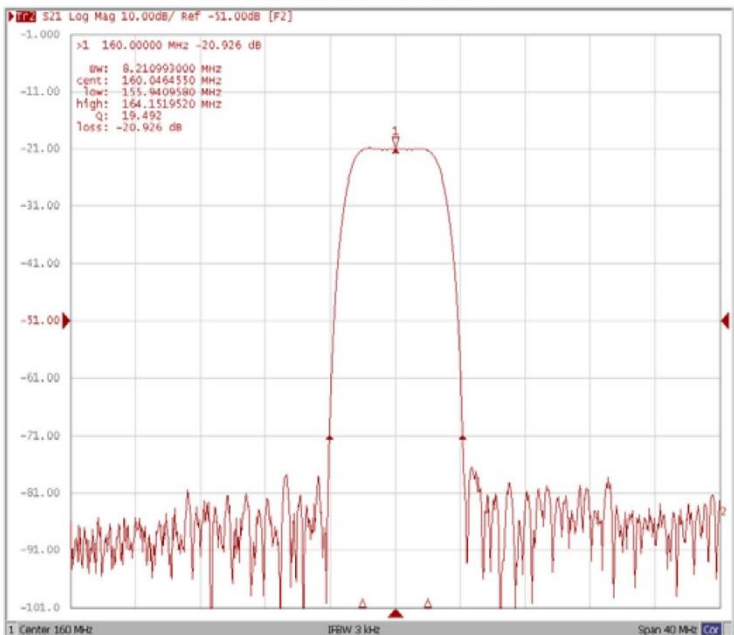
#### Bandwidth at -3.0 dB



#### Bandwidth at -40.0 dB



#### Bandwidth at -50.0 dB





# 160 MHz IF Saw Filter 4 MHz Bandwidth

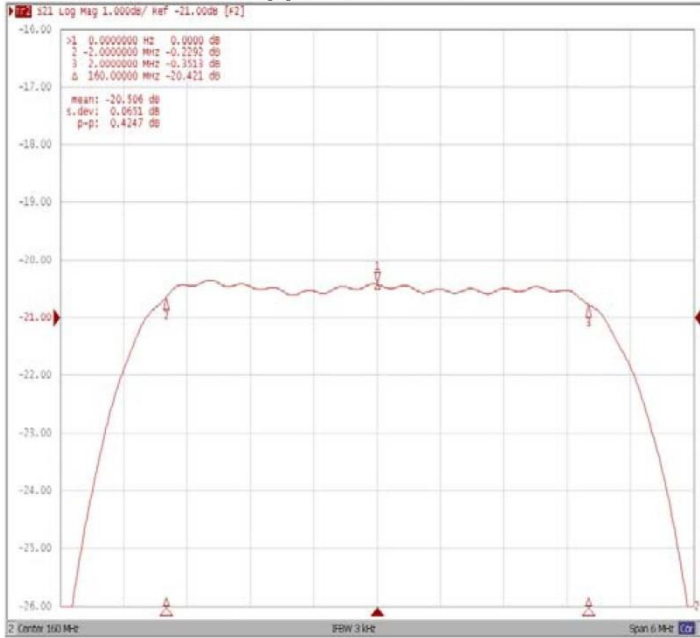
Part Number: AM160S619



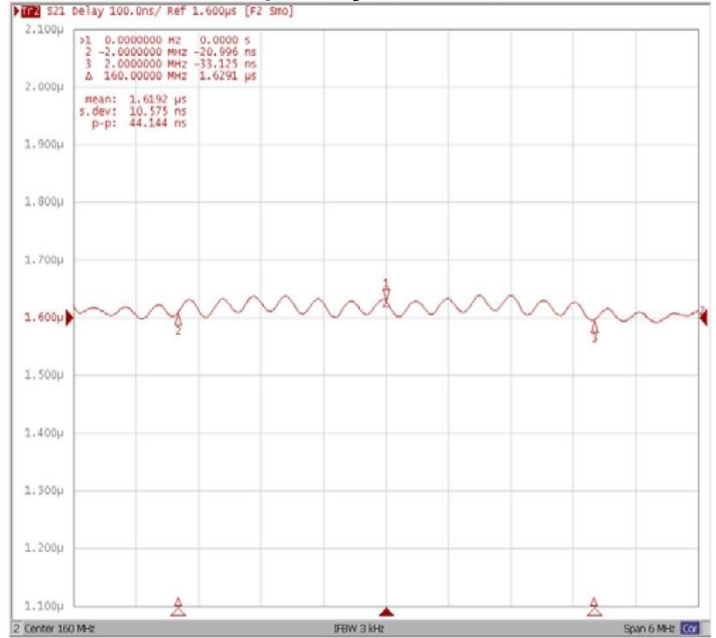
**ANATECH ELECTRONICS INC**  
RF & Microwave Filters & Products

## Frequency Response:

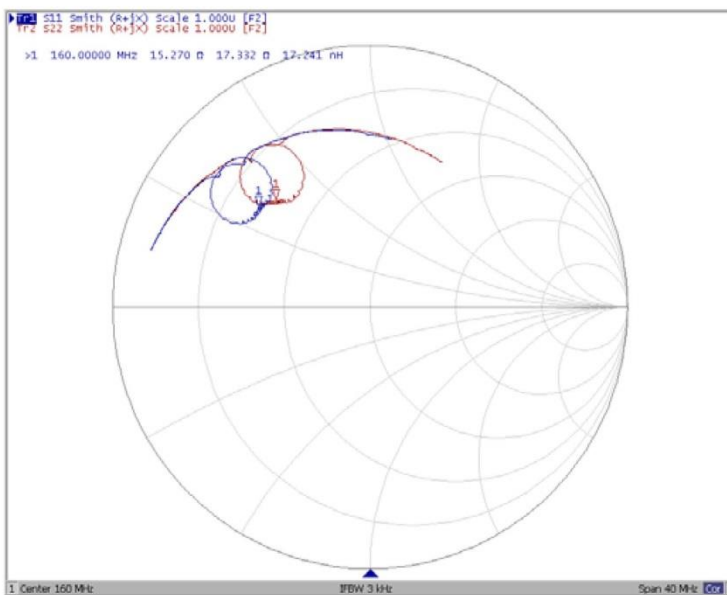
### Ripple Variation



### Group Delay Variation



### Smith Chart



### VSWR

