



160 MHz IF Saw Filter 19 MHz Bandwidth

Part Number: AM160S621



ANATECH ELECTRONICS INC
RF & Microwave Filters & Products

Parameters Description	Unit	Minimum	Typical	Maximum
Center Frequency (Fo)	MHz	-	160.0	-
Insertion Loss at Fo	dB	-	27.7	29.5
Group Delay Variation at Fo ± 9.65 MHz	nsec	-	30	80
Amplitude Ripple Variation Fo ± 9.65 MHz	dBp-p	-	0.75	-
Absolute Delay Time at Fo	µsec	-	2.09	-
Temperature Coefficient	ppm/°C	-	-72	-
Bandwidth at -1.0 dB	MHz	-	20.03	-
Bandwidth at -3.0 dB	MHz	-	20.43	-
Bandwidth at -20.0 dB	MHz	-	21.42	-
Bandwidth at -40.0 dB	MHz	-	21.87	-
Lower Sidelobe	dB	-	50	-
Upper Sidelobe	dB	-	50	-

Parameters Description	Unit	Minimum	Typical	Maximum
Operation Temperature Range	°C	-	+25	-
Storage Temperature Range	°C	-	-	-
Maximum DC Voltage	V	-	-	10
Maximum Input Power	dBm	-	-	10
Source Impedance (Single Ended) ₁	Ω	-	50	-
Load Impedance (Single Ended) ₁	Ω	-	50	-
Package Size and Type	20.0 x 9.8 x 1.8 mm		D1	



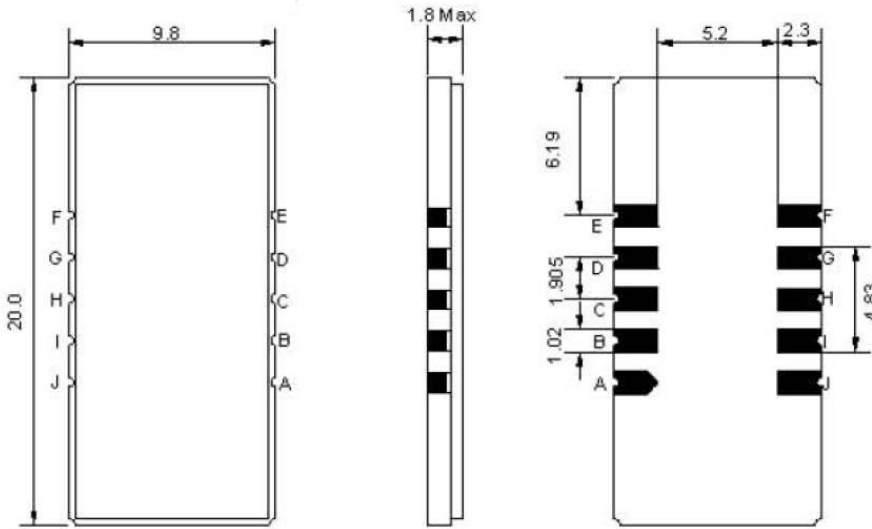
160 MHz IF Saw Filter 19 MHz Bandwidth

Part Number: AM160S621



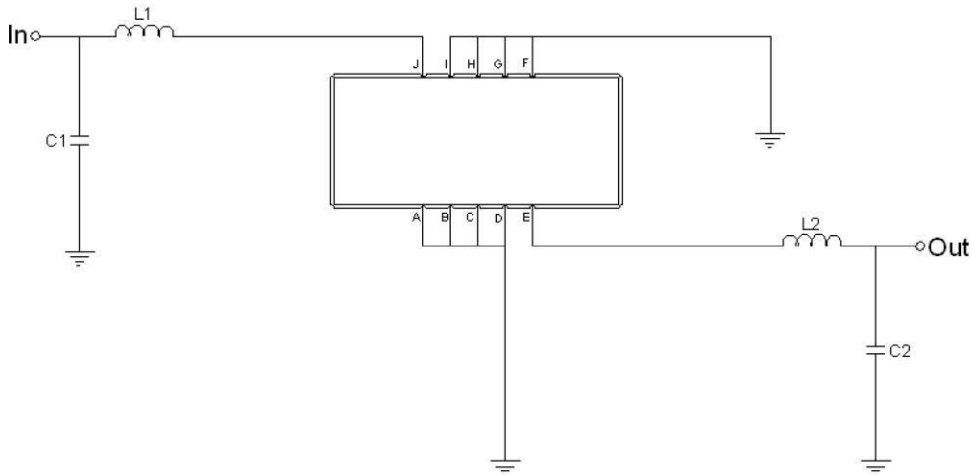
ANATECH ELECTRONICS INC
RF & Microwave Filters & Products

Outline Drawing:



Pin Description	
Ground	A B C D F G H I
Input	J
Output	E

Testing Environment:



Test Fixture & Values	
Input	L1=10 nH, C1=13 pF
Output	L2=12 nH, C2=13 pF
Source/Load Impedance	50 Ω



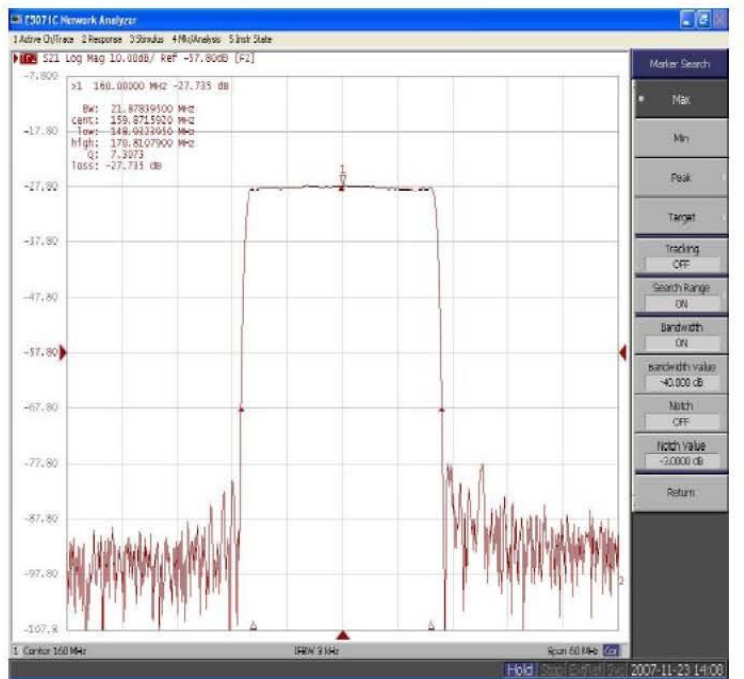
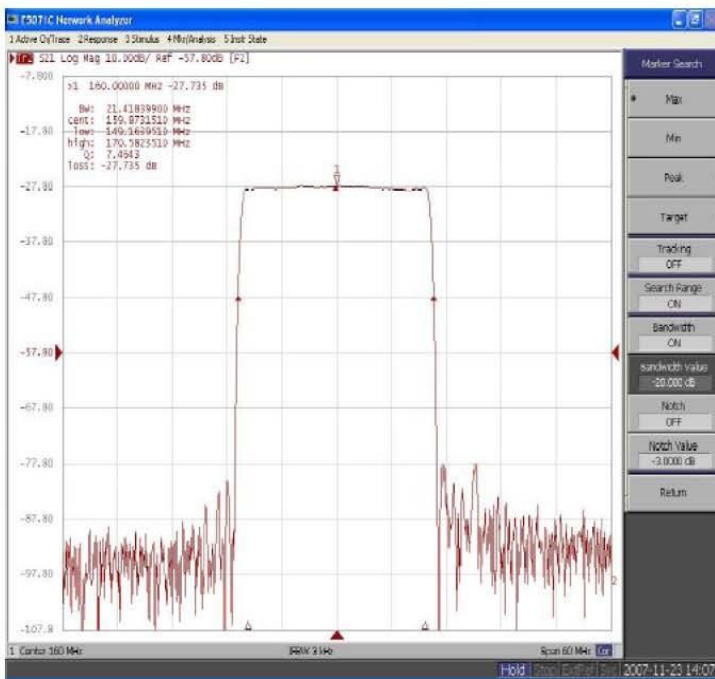
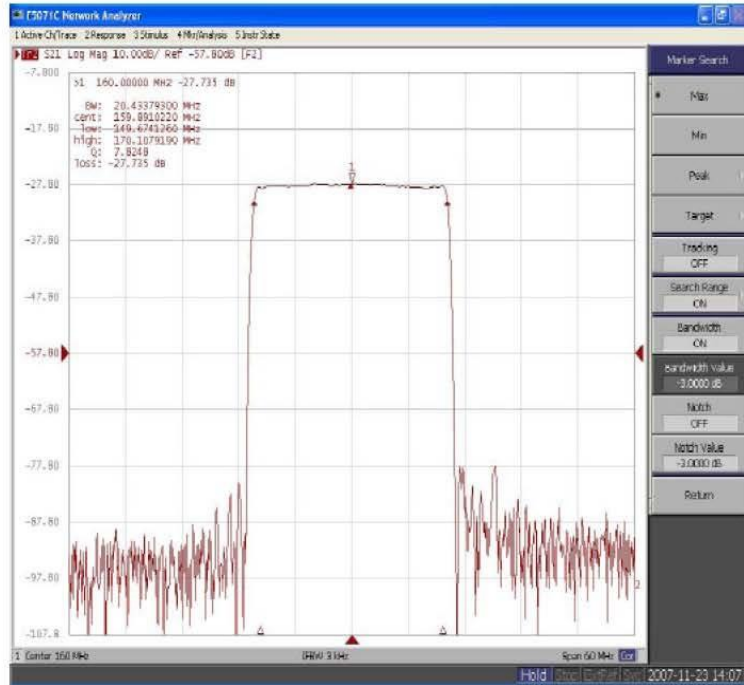
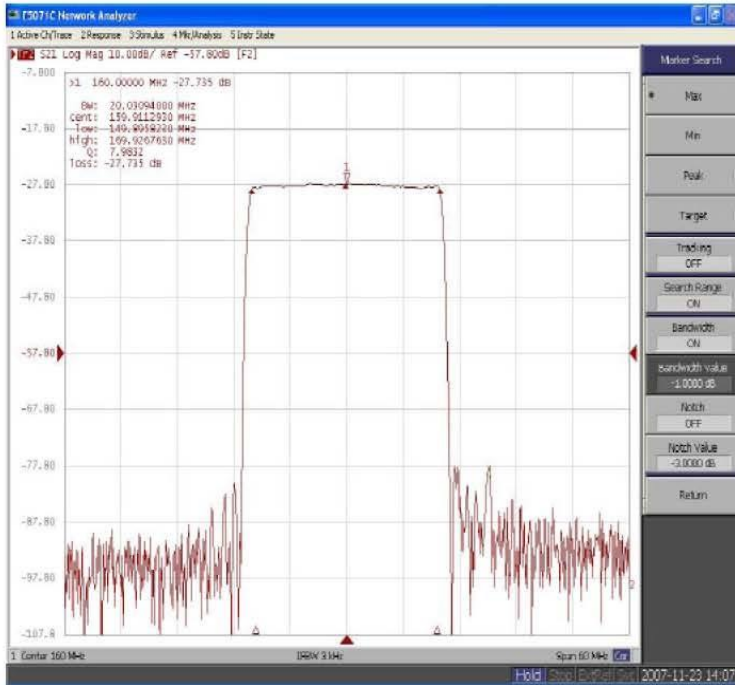
160 MHz IF Saw Filter 19 MHz Bandwidth

Part Number: AM160S621



ANATECH ELECTRONICS INC
RF & Microwave Filters & Products

Frequency Response:





160 MHz IF Saw Filter 19 MHz Bandwidth

Part Number: AM160S621



ANATECH ELECTRONICS INC
RF & Microwave Filters & Products

Frequency Response:

