



160 MHz IF Saw Filter 9 MHz Bandwidth

Part Number: AM160S624

ANATECH ELECTRONICS INC
RF & Microwave Filters & Products



Parameters Description	Unit	Minimum	Typical	Maximum
Center Frequency (Fo)	MHz	-	160.00	-
Insertion Loss at Fo	dB	-	23.0	24.5
Group Delay Variation within Fo ± 4.35 MHz	nsec	-	60	150
Amplitude Ripple within Fo ± 4.35 MHz	dBp-p	-	0.55	1.00
Absolute Delay at Fo	µsec	-	1.62	-
Temperature Coefficient	ppm/°C	-	-20	-
Bandwidth at -1.0 dB	MHz	-	9.20	-
Bandwidth at -3.0 dB	MHz	9.30	9.50	-
Bandwidth at -40.0 dB	MHz	-	10.85	10.95
Lower Sidelobe	dB	45	50	-
Upper Sidelobe	dB	45	50	-

Parameters Description	Unit	Minimum	Typical	Maximum
Operation Temperature Range	°C	-30	-	+80
Storage Temperature Range	°C	-40	-	+85
Maximum DC Voltage	V	-	-	10
Maximum Input Power	dBm	-	-	10
Source Impedance (Single Ended) ₁	Ω	-	50	-
Load Impedance (Single Ended) ₁	Ω	-	50	-
Package Size and Type		13.0 x 6.5 x 1.8 mm		V



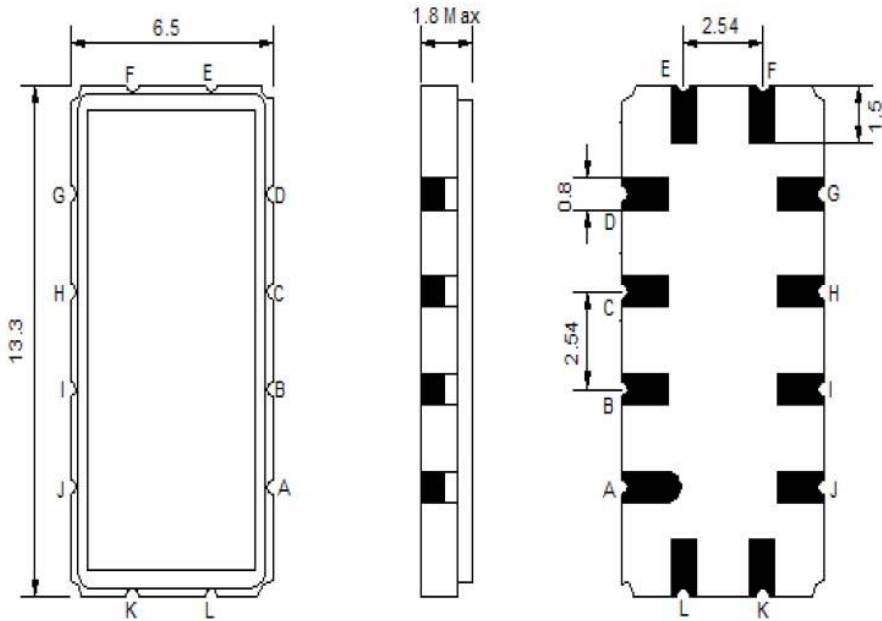
160 MHz IF Saw Filter 9 MHz Bandwidth

Part Number: AM160S624



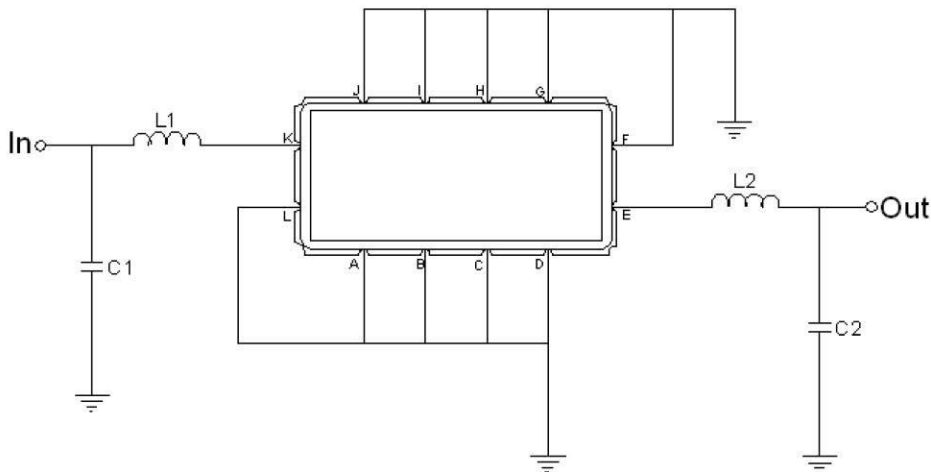
ANATECH ELECTRONICS INC
RF & Microwave Filters & Products

Outline Drawing:



Pin Description	
Ground	A B C D F G H I J L
Input	K
Output	E

Testing Environment:



Test Fixture & Values	
Input	L1=18nH, C1=24pF
Output	L2=27nH, C2=24pF
Source/Load Impedance	50 Ω



Frequency Response:

