



Low-Loss 160 MHz IF Saw Filter

Part Number: AM160S719

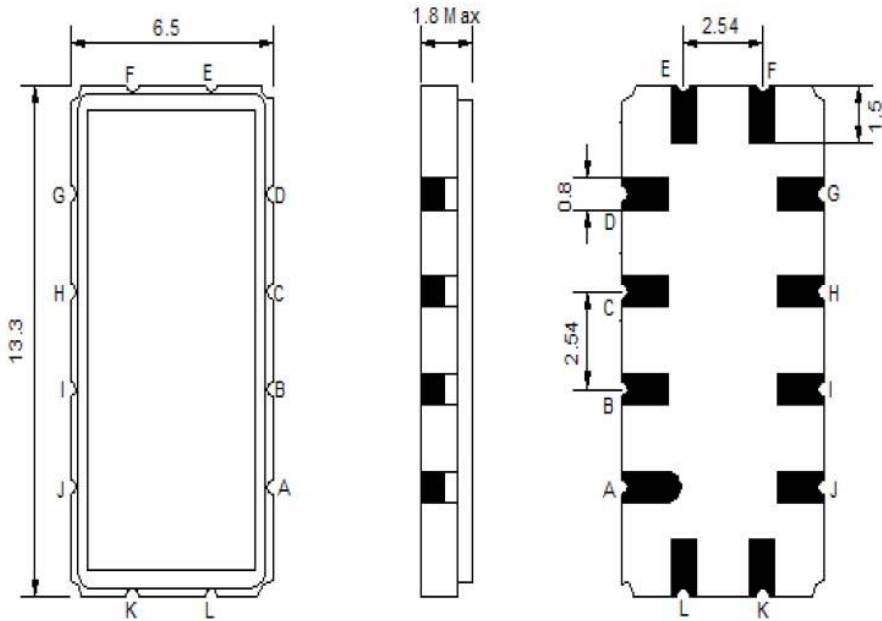


Parameters Description	Unit	Minimum	Typical	Maximum
Center Frequency (Fo)	MHz	-	160.0	-
Insertion Loss at Fo	dB	-	16.5	17.5
Group Delay Variation	nsec	-	40	150
Amplitude Ripple Variation	dBp-p	-	0.50	1.00
Absolute Delay at Fo	µsec	-	0.95	-
Temperature Coefficient	ppm/°C	-	-18	-
Bandwidth at -1.0 dB	MHz	9.2	9.5	-
Bandwidth at -3.0 dB	MHz	10.0	10.3	-
Bandwidth at -40.0 dB	MHz	-	13.2	14.0
Lower Sidelobe	dB	40	47	-
Upper Sidelobe	dB	40	50	-

Parameters Description	Unit	Minimum	Typical	Maximum
Operation Temperature Range	°C	-30	-	+80
Storage Temperature Range	°C	-40	-	+85
Maximum DC Voltage	V	-	-	10
Maximum Input Power	dBm	-	-	10
Source Impedance (Single Ended) ₁	Ω	-	50	-
Load Impedance (Single Ended) ₁	Ω	-	50	-
Package Size and Type		13.0 x 6.5 x 1.8 mm		V

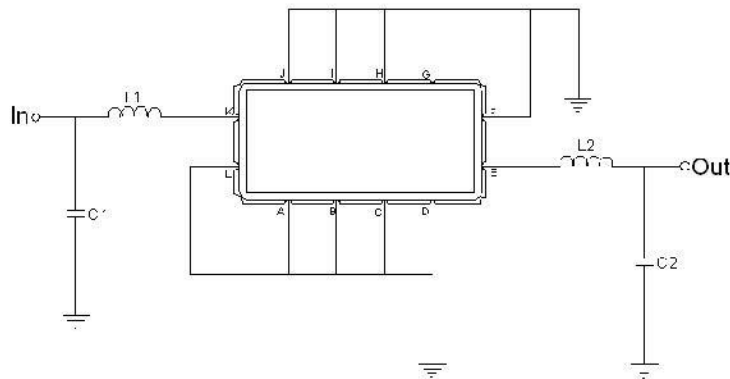


Outline Drawing:



Pin Description	
Ground	A B C D F G H I J L
Input	K
Output	E

Testing Environment:



Test Fixture & Values			
Input	L1=33nH	Q > 40 ,	C1=43pF
Output	L2=33nH	Q > 40 ,	C2=43pF
Source/Load Impedance		50 Ω	



Frequency Response:

