



Low-Loss 160 MHz IF Saw Filter

Part Number: AM160S720

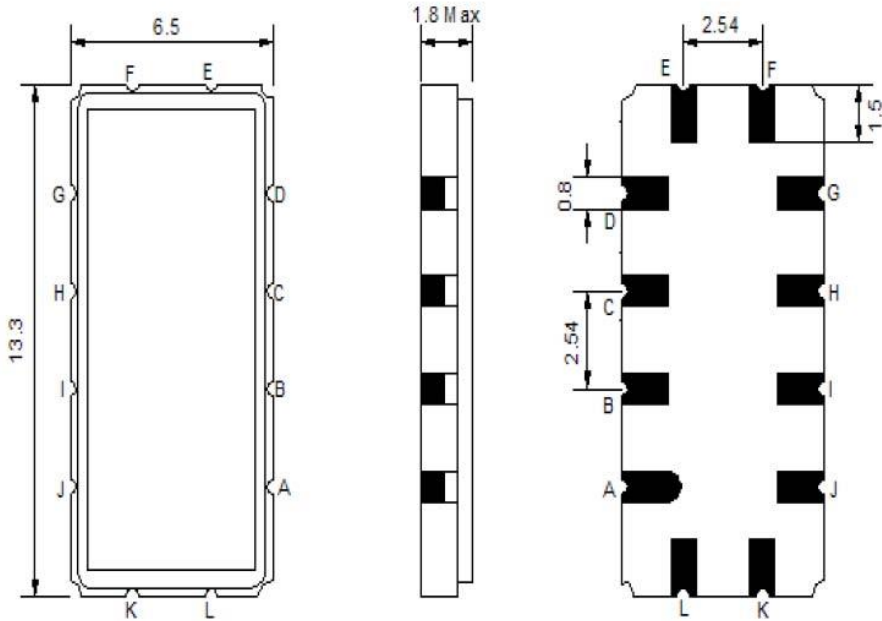


Parameters Description	Unit	Minimum	Typical	Maximum
Center Frequency (Fo)	MHz	-	160.0	-
Insertion Loss at Fo	dB	-	9.70	12.0
Group Delay Variation	nsec	-	55	150
Amplitude Ripple Variation	dBp-p	-	0.80	1.00
Absolute Delay at Fo	µsec	-	0.91	-
Temperature Coefficient	ppm/°C	-	-86	-
Bandwidth at -1.0 dB	MHz	9.5	9.8	-
Bandwidth at -3.0 dB	MHz	10.3	10.6	-
Bandwidth at -40.0 dB	MHz	-	13.6	14.5
Lower Sidelobe	dB	40	50	-
Upper Sidelobe	dB	40	43	-

Parameters Description	Unit	Minimum	Typical	Maximum
Operation Temperature Range	°C	-30	-	+80
Storage Temperature Range	°C	-40	-	+85
Maximum DC Voltage	V	-	-	10
Maximum Input Power	dBm	-	-	10
Source Impedance (Single Ended) ₁	Ω	-	50	-
Load Impedance (Single Ended) ₁	Ω	-	50	-
Package Size and Type		13.0 x 6.5 x 1.8 mm		V

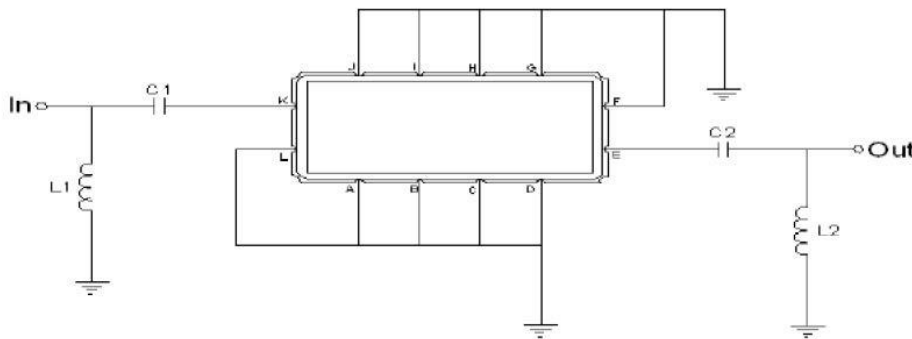


Outline Drawing:



Pin Description	
Ground	A B C D F G H I J L
Input	K
Output	E

Testing Environment:



Test Fixture & Values

Input	L1=27nH, Q >40 , C1=68pF
Output	L2=27nH, Q.>40 , C2=43pF
Source/Load Impedance	50 Ω



Low-Loss 160 MHz IF Saw Filter

Part Number: AM160S720



Frequency Response:

