



ANATECH ELECTRONICS, INC.

Manufacturer of RF & Microwave Filters and Products



162 MHz IF Saw Filter 14 MHz Bandwidth

Part Number: AM162S625

Center Frequency (Fo)	MHz	-	162.5	-
Insertion Loss at Fo	dB	-	31.5	32.5
Group Delay Variation (Fo±7.09MHz)	ns	-	49	100
Phase Linearity (Fo±7.09MHz)	deg	-	6	10
Absolute Delay Time at Fo	us	-	3.68	4.0
Temperature Coefficient	ppm/°C	-	-18	-
Amplitude Ripple (Fo±7.09MHz)	dB	-	0.8	1.0
Bandwidth at -1dB	MHz	14.18	14.36	-
Bandwidth at -45dB	MHz	-	15.68	15.80
Input & Output Return Loss	dB	7.0		
Triple transit attenuation	dBc	35	-	-
Relative Attenuation				
10MHz~150.0MHz	dBc	40	57	-
@154.84 MHz	dBc	15	21	-
@154.94 MHz	dBc	6	13	-
@170.06 MHz	dBc	6	14	-
@170.16 MHz	dBc	15	22	-
175.0MHz ~300.0MHz	dBc	40	57	-

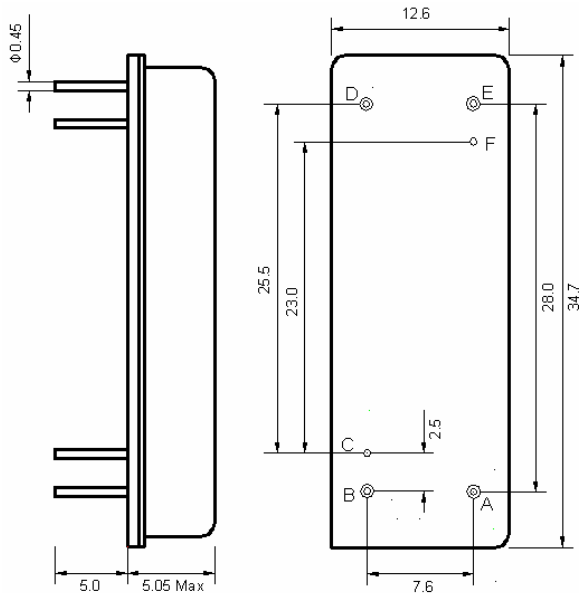
Parameters Description	Unit	Minimum	Typical	Maximum
Operation Temperature Range	°C	-	45	-
Storage Temperature Range	°C	-20	-	70
Maximum DC Voltage	V	-	-	10
Maximum Input Power	dBm	-	-	28
Source Impedance (single ended) ⁽¹⁾		-	50	-
Load Impedance (single ended) ⁽¹⁾		-	50	-
Package type & size	F			
Length x Width	mm ²	-	34.7 x 12.6	-
Height	mm	-	-	5.05



162 MHz IF Saw Filter 14 MHz Bandwidth

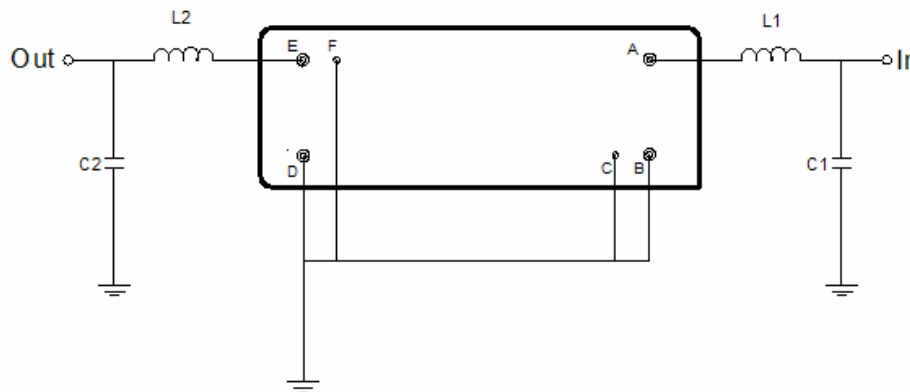
Part Number: AM162S625

Package Dimensions



Pin Description	
B, C, D, F	Ground
A	Input
E	Output

Testing Environment



Test Fixture & Values	
Input	L1=33 nH Q >40, C1=30 pF
Output	L2=27 nH Q >40, C2=30 pF
Source/Load Impedance	50 Ω

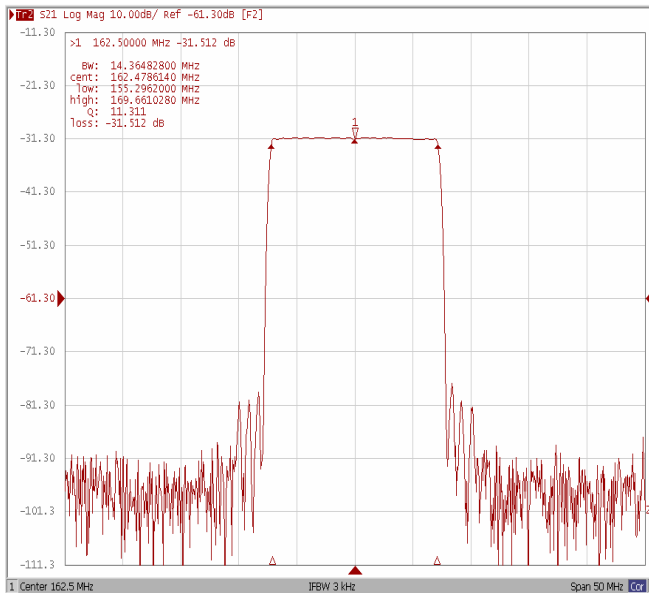


162 MHz IF Saw Filter 14 MHz Bandwidth

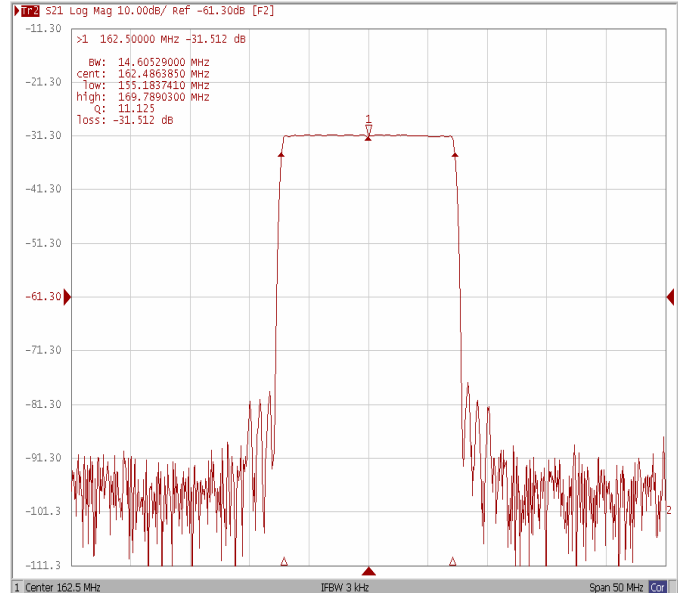
Part Number: AM162S625

Frequency Response

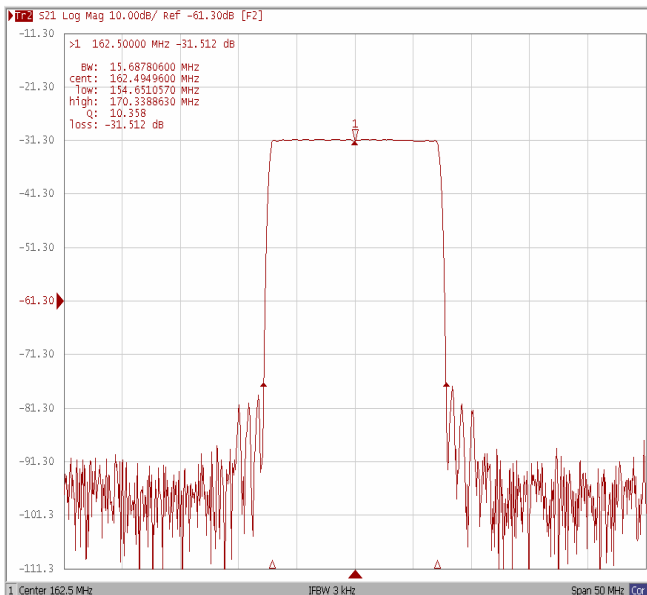
Bandwidth at -1.0 dB



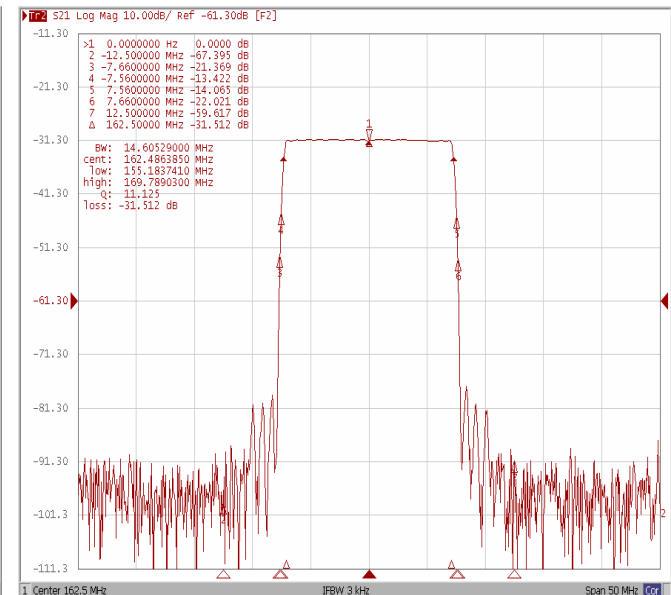
Bandwidth at -3.0 dB



Bandwidth at -45.0 dB



Relative Attenuation



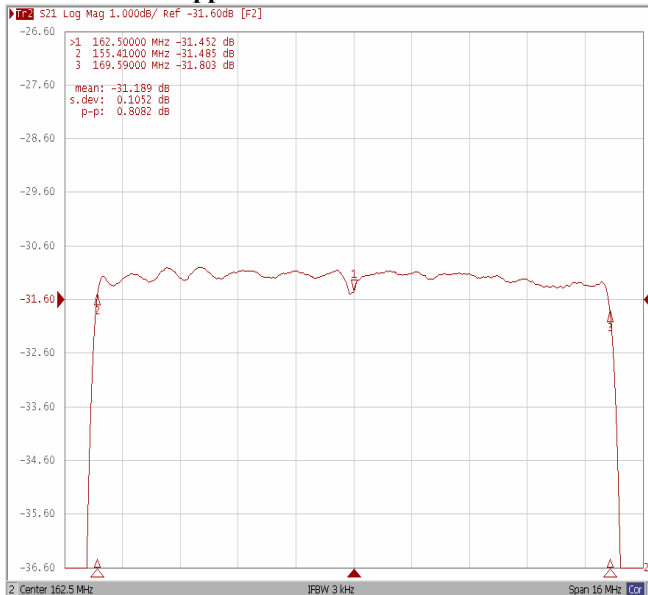


162 MHz IF Saw Filter 14 MHz Bandwidth

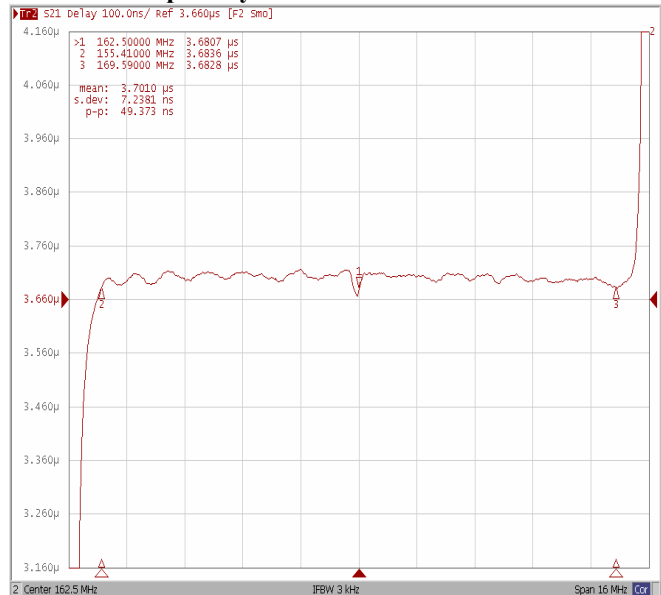
Part Number: AM162S625

Frequency Response

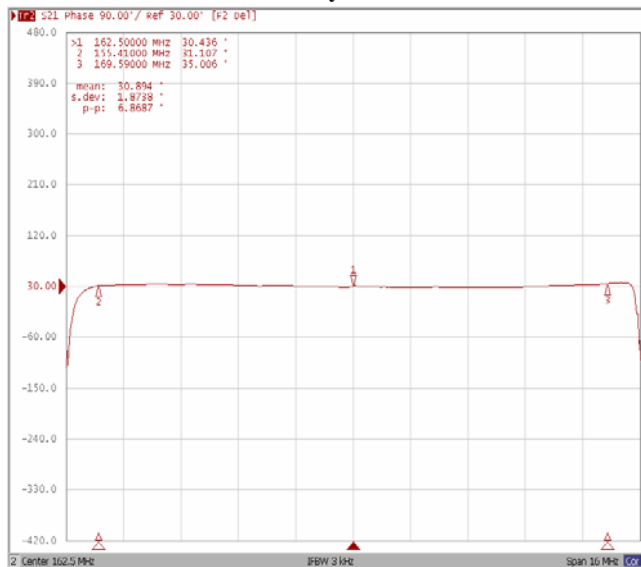
Ripple Variation Fo±7.09MHz



Group Delay Variation Fo±7.09MHz



Phase Linearity Fo±7.09MHz



Smith Chart

