



184 MHz IF Saw Filter 5 MHz Bandwidth

Part Number: AM184S627

ANATECH ELECTRONICS INC
RF & Microwave Filters & Products



Parameters Description	Unit	Minimum	Typical	Maximum
Center Frequency (Fo)	MHz	-	184.00	-
Insertion Loss at Fo	dB	-	23.5	25.0
Group Delay Variation within Fo ± 2.5 MHz	nsec	-	45	100
Passband Ripple within Fo ± 2.5 MHz	dB	-	0.25	0.80
Absolute Delay at Fo	µsec	-	1.75	-
Bandwidth at -1.0 dB	MHz	5.00	5.65	-
Bandwidth at -3.0 dB	MHz	-	6.00	-
Bandwidth at -40.0 dB	MHz	-	7.40	-
Ultimate Rejection	dB	40	45	-
Relative Attenuation within Fo ± 4.0 MHz	dB	-	45	-

Parameters Description	Unit	Minimum	Typical	Maximum
Operation Temperature Range	°C	0	-	+70
Storage Temperature Range	°C	-40	-	+85
Maximum DC Voltage	V	-	-	10
Maximum Input Power	dBm	-	-	10
Source Impedance (Single Ended) ₁	Ω	-	50	-
Load Impedance (Single Ended) ₁	Ω	-	50	-
Package Size and Type		13.3 x 6.5 x 1.8 mm		V



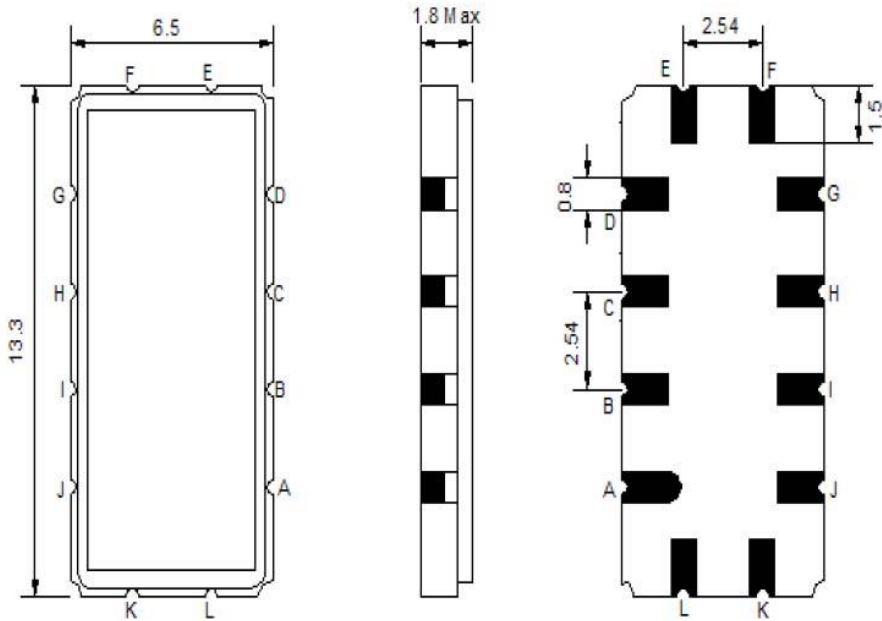
184 MHz IF Saw Filter 5 MHz Bandwidth

Part Number: AM184S627



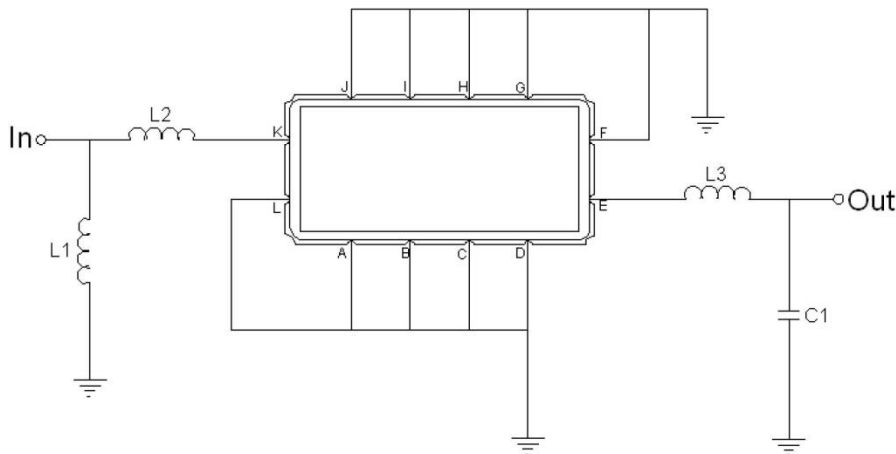
ANATECH ELECTRONICS INC
RF & Microwave Filters & Products

Outline Drawing:



Pin Description	
Ground	A B C D F G H I J L
Input	K
Output	E

Testing Environment:



Test Fixture & Values	
Input	L1=18 nH, L2=27 nH
Output	L3=47 nH, C1=43 pF
Source/Load Impedance	50 Ω



184 MHz IF Saw Filter 5 MHz Bandwidth

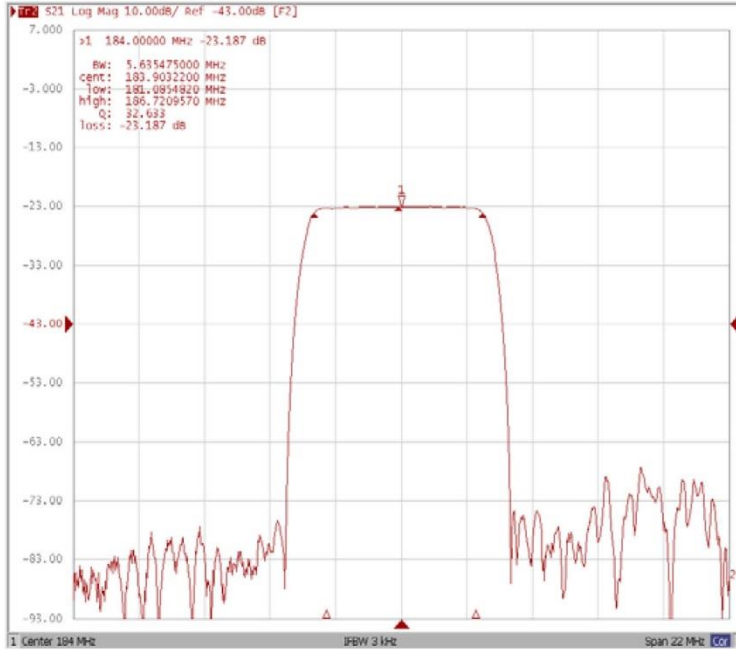
Part Number: AM184S627



ANATECH ELECTRONICS INC
RF & Microwave Filters & Products

Frequency Response:

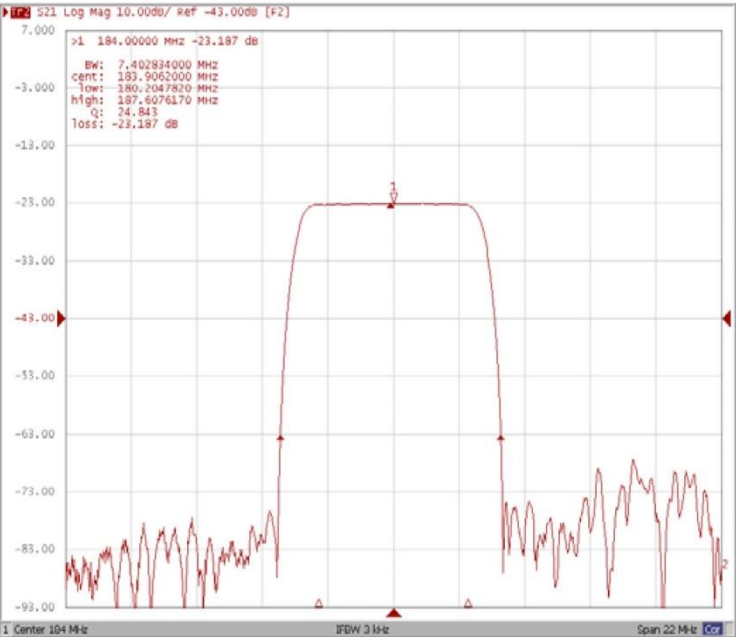
Bandwidth at -1.0 dB



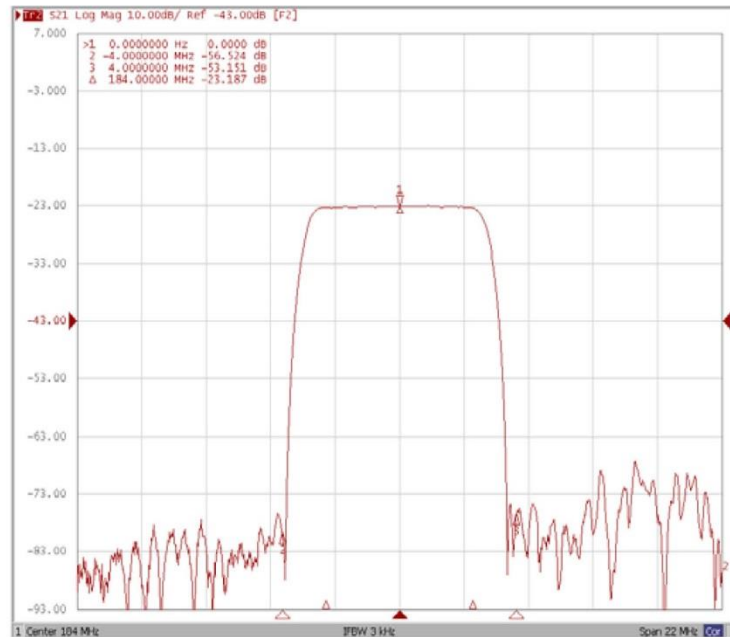
Bandwidth at -3.0 dB



Bandwidth at -40.0 dB



Relative Attenuation Fo±4MHz





184 MHz IF Saw Filter 5 MHz Bandwidth

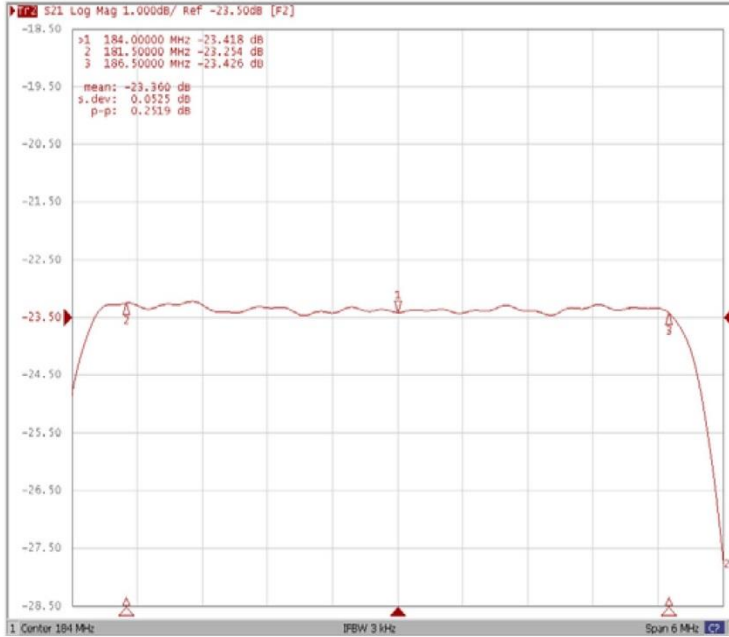
Part Number: AM184S627



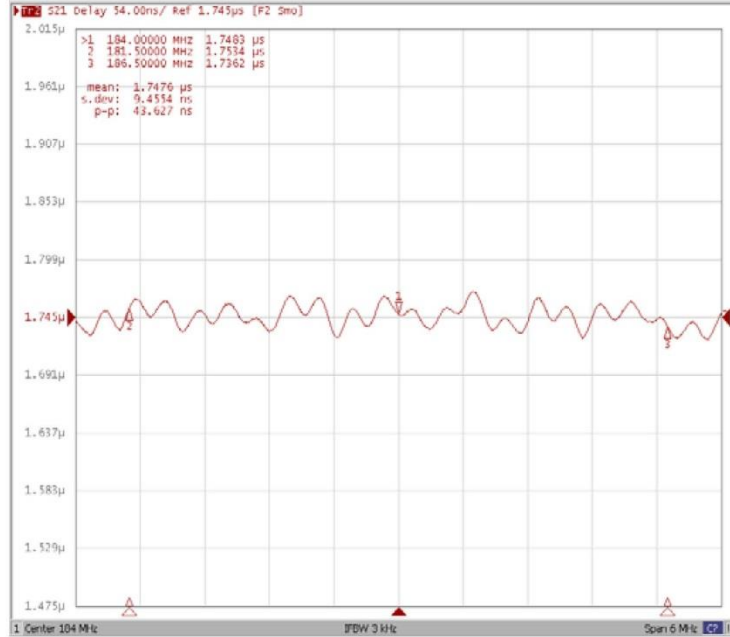
ANATECH ELECTRONICS INC
RF & Microwave Filters & Products

Frequency Response:

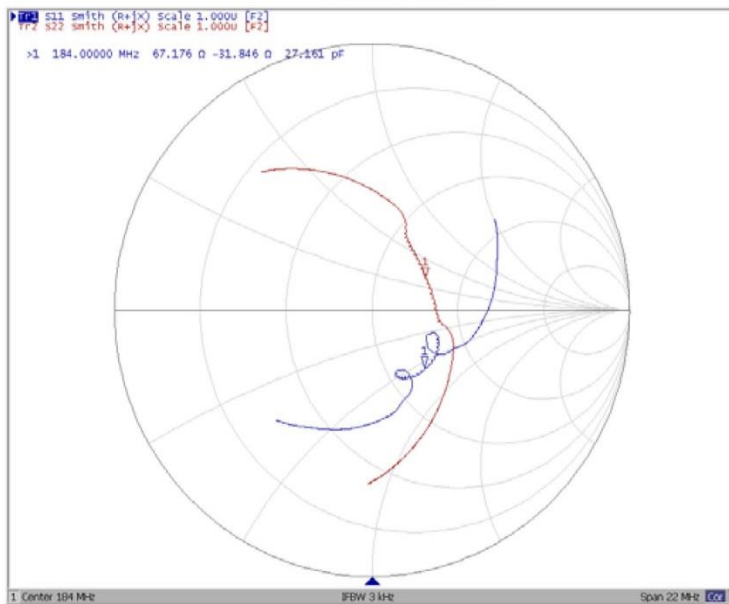
Ripple Variation Fo±2.5MHz



Group Delay Variation Fo±2.5MHz



Smith Chart



VSWR

