



**Electrical specifications**

**Center Frequency:** 1880 MHz  
**Bandwidth:** 60 MHz  
**Input / Output Impedance:** 50 Ohms  
**Passband:** 1850-1910 MHz  
**Passband Insertion Loss:** 1850-1910 MHz 3.4 dB  
**Passband Ripple:** 1850-1910 MHz 2.1 dB max  
**Passband Return Loss:** 1850-1910 MHz 8.0dB min  
**Rejection:** 1920 MHz 12.5 dB min  
**Rejection 2:** 1930-1990 MHz 17.0 dB min  
**Power Handling:** 2 Watts

**Mechanical**

**Mounting Method:** SMT  
**Dimensions:** 13.67 x 6.12 x 5.64 mm

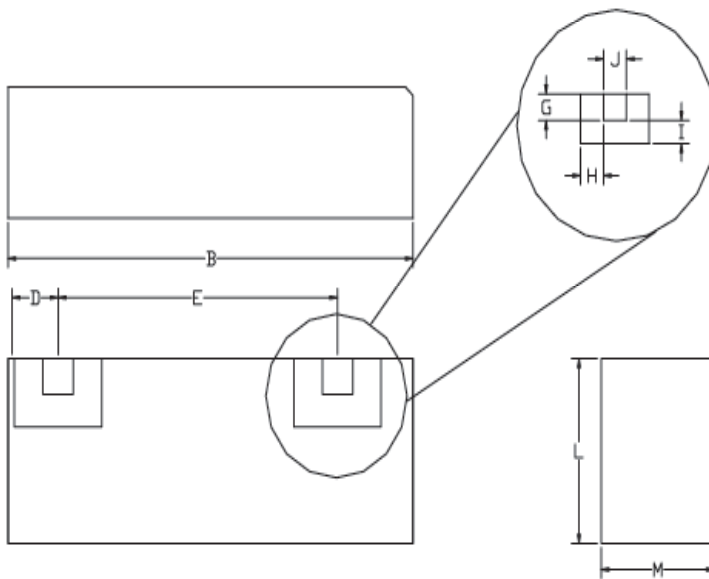
**Environmental**

**Operating Temperature:** -30°C to +85°C  
**Storage Temperature:** -50°C to +90°C

**This product is RoHs compliant.**



**Mechanical Drawing:**



Dim	Nominal (mm)	Tolerance (mm) +/- or max
A		
B	13.67	max
C		
D	1.66	0.13
E	9.25	0.13
F		
G	1.02	0.13
H	0.94	0.13
I	0.94	0.13
J	1.02	0.13
K		
L	5.64	max
M	6.12	max



**ANATECH ELECTRONICS INC**  
RF & Microwave Filters & Products

# PCS Ceramic BPF

## Part Number: AM1880B225



### Response Plot:

