



Electrical specifications

Center Frequency: 1950 MHz
Bandwidth: 60 MHz
Input / Output Impedance: 50 Ohms
Passband: 1920–1980 MHz
Passband Insertion Loss: 1920–1980 MHz 2.5 dB
Passband Ripple: 1920–1980 MHz 2 dB
Passband Return Loss: 1920-1980 MHz 10 dB
Rejection: 1830 MHz 30 dB
Rejection 2: 1840 MHz 24 dB min
Rejection 3: 2060 MHz 24 dB min
Power Handling: 1 Watt max

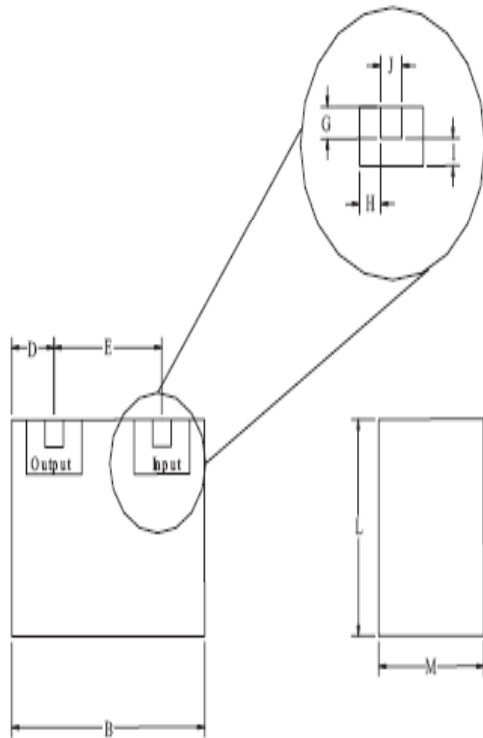
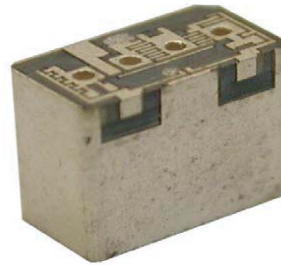
Mechanical

Mounting Method: SMT
Dimensions: 7.05 x 5.61 x 3.93 mm

Environmental

Operating Temperature: -40°C to +85°C
Storage Temperature: -50°C to +90°C

This product is RoHs compliant.



Dim	Nominal (mm)	Tolerance (mm) +/- or max
A		
B	7.05	max
C		
D	1.55	0.25
E	3.86	0.13
F		
G	0.66	0.13
H	0.66	0.13
I	0.66	0.13
J	0.66	0.13
K		
L	5.61	max
M	3.93	max



ANATECH ELECTRONICS INC
RF & Microwave Filters & Products

WCDMA Bandpass

Part Number: AM1950B192



Response Plot:

