



**Electrical specifications**

**Center Frequency:** 1950 MHz  
**Bandwidth:** 60 MHz  
**Input / Output Impedance:** 50 Ohms  
**Passband:** 1920-1980 MHz  
**Passband Insertion Loss:** 1920-1980 MHz 2.4 dB  
**Passband Ripple:** 1920-1980 MHz 0.9 dB  
**Passband Return Loss:** 1920–1980 MHz 10.0 dB  
**Rejection:** 1900 MHz 15.0 dB  
**Rejection 2:** 2000 MHz 15.0 dB  
**Rejection 3:** 2110–2170 MHz 35.0 dB  
**Power Handling:** 2 Watt max.

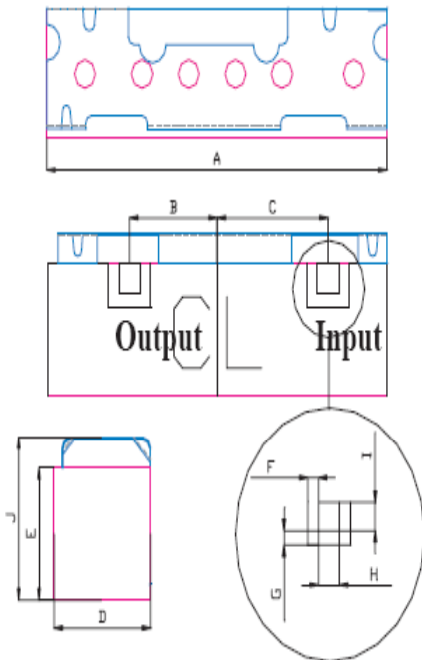
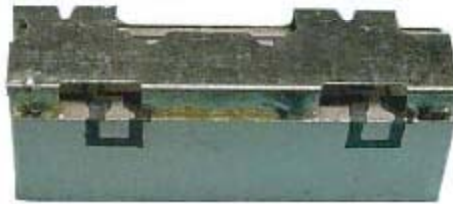
**Mechanical**

**Mounting Method:** SMT  
**Dimensions:** 16.42 x 6.1 x 4.85 mm

**Environmental**

**Operating Temperature:** 40°C to +85°C  
**Storage Temperature:** -50°C to +90°C

**This product is RoHs compliant.**



Dim	Nominal	(mm)	Tolerance (mm) +/- or max
A	16.42		max
B	4.2		0.13
C	5.3		0.13
D	4.85		max
E	4.9		0.13
F	0.51		0.13
G	0.51		0.13
H	1.02		0.13
I	1.02		0.13
J	6.1		max



**Response Plot:**

