



**Electrical specifications**

**Center Frequency:** 2140 MHz  
**Bandwidth:** 60 MHz  
**Input / Output Impedance:** 50 Ohms  
**Passband:** 2110–2170 MHz  
**Passband Insertion Loss:** 2110–2170 MHz 2.4 dB  
**Passband Ripple:** 2110–2170 MHz 0.9 dB  
**Passband Return Loss:** 2110–2170 MHz 10.0 dB  
**Rejection:** 2090 MHz 15.0 dB  
**Rejection 2:** 2190 MHz 15.0 dB  
**Rejection 3:** 1920–1980 MHz 30.0 dB  
**Power Handling:** 2 Watt max.

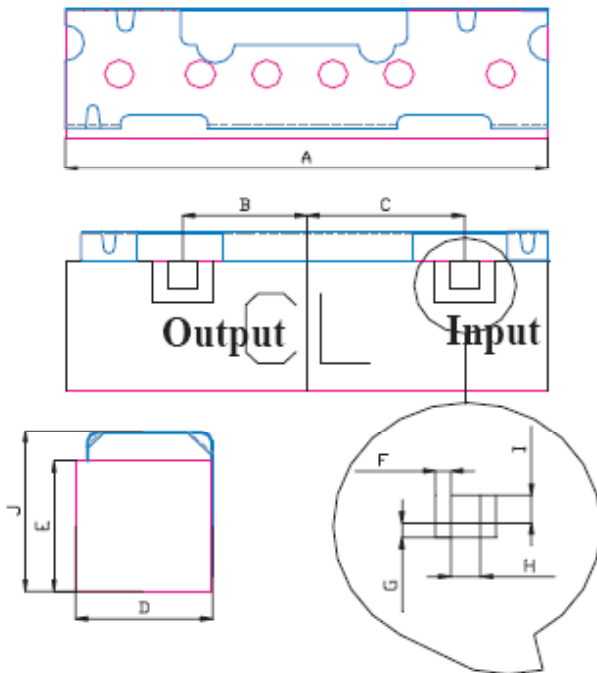
**Mechanical**

**Mounting Method:** SMT  
**Dimensions:** 16.42 x 6.03 x 4.85 mm

**Environmental**

**Operating Temperature:** -40°C to +85°C  
**Storage Temperature:** -50°C to +90°C

**This product is RoHs compliant.**



Dim	Nominal (mm)	Tolerance (mm) +/- or max
A	16.42	max
B	4.2	0.13
C	5.3	0.13
D	4.85	max
E	4.9	max
F	0.51	0.13
G	0.51	0.13
H	1.02	0.13
I	1.02	0.13
J	6.03	max