

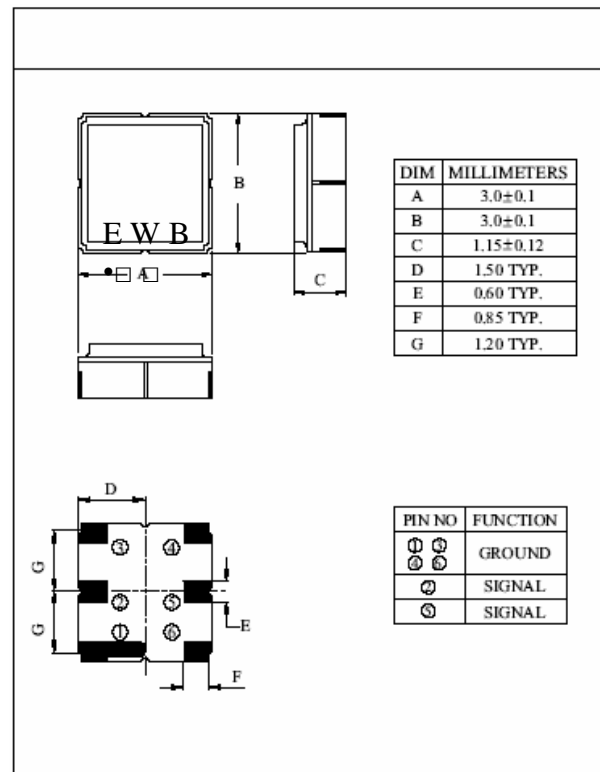


2140 MHz Saw Filter

P/N: AM2140S918

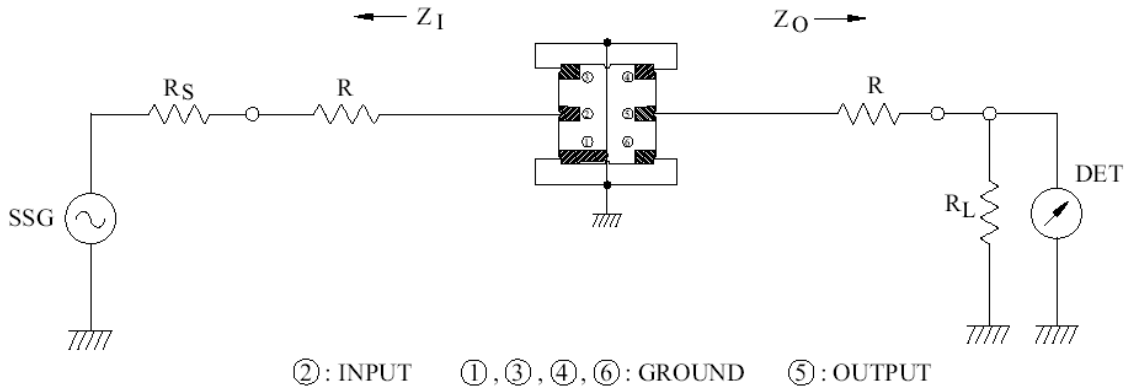
Items	Test Condition	Min.	Typ.	Max.
Center Frequency	-	-	2140 MHz	-
Insertion Loss	2110~2170MHz	-	1.8 dB	3.5 dB
Amplitude Ripple	2110~2170MHz	-	0.75 dB	1.5 dB
Attenuation	DC~500MHz	25 dB	35 dB	-
	500~2025MHz	20 dB	30.5 dB	-
	2025~2050MHz	27 dB	39 dB	-
	2230~2260MHz	41 dB	48 dB	-
2490~2550MHz	31 dB	40 dB	-	
Passband VSWR	2110~2170MHz	-	1.3	2.2
Input/output Impedance	-	-	50 Ω	-

Items	Rating	Unit
Maximum Working Voltage	10	V _{dc}
Minimum Working Power	10	dBm
Operating Temperature	-30 ~ +85	□
Storage Temperature Range	-40 ~ +90	□





Matching Configuration:



$R_S, R_L : 50 \Omega$ (Internal Impedance of Source and Load)
 $R : 0 \Omega$
 $Z_1(Z_0) = R_S(R_L) + R$

Typical Performance:

