



**ANATECH ELECTRONICS INC**  
RF & Microwave Filters & Products

## 300 MHz Saw Filter

**Part Number: AM300S412**

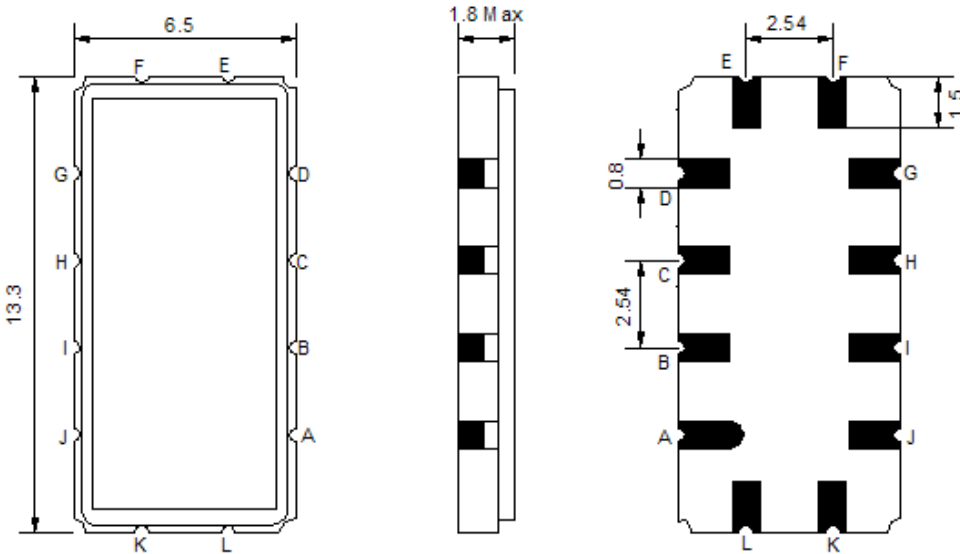


Parameters Description	Unit	Minimum	Typical	Maximum
Center Frequency (Fo)	MHz	-	300.0	-
Insertion Loss at Fo	dB	-	17.5	19.5
Temperature Coefficient	ppm/°C	-	-0.03	-
Amplitude Ripple Variation	dBp-p	-	1.0	1.5
Group Delay Variation	nsec	-	150	200
Absolute Delay at Fo	µsec	-	0.509	1.2
Bandwidth at -1.0 dB	MHz	2.0	2.54	-
Bandwidth at -3.0 dB	MHz	3.0	3.66	-
Bandwidth at -40.0 dB	MHz	-	9.74	11.0
Lower Sidelobe	dB	50	55	-
Upper Sidelobe	dB	50	55	-
Ambient Temperature	°C	-	+25	-

Parameters Description	Unit	Minimum	Typical	Maximum
Operation Temperature Range	°C	-30	-	+80
Storage Temperature Range	°C	-40	-	+85
Maximum DC Voltage	V	-	-	10
Maximum Input Power	dBm	-	-	10
Source Impedance (Single Ended) <sub>1</sub>	Ω	-	50	-
Load Impedance (Single Ended) <sub>1</sub>	Ω	-	50	-
Package Size and Type	13.3 x 6.5 x 1.8 mm		V	

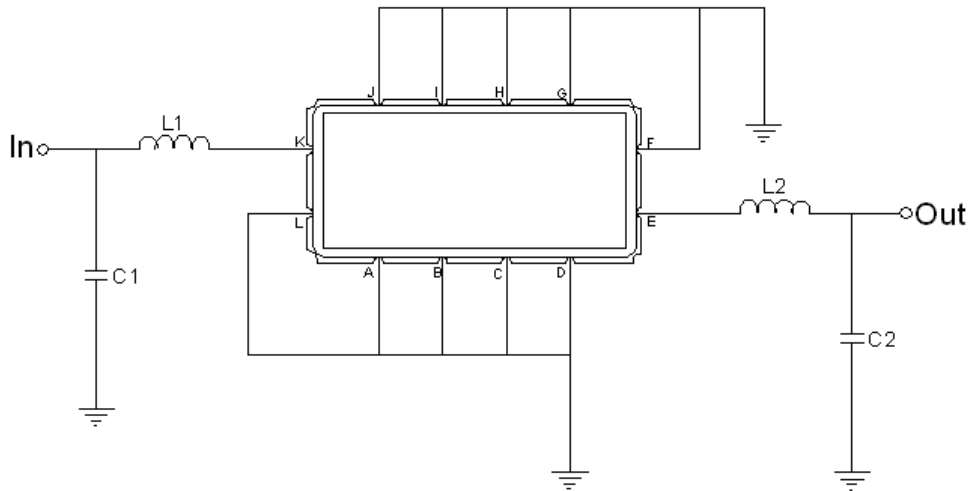


**Outline Drawing:**



PIN Descriptions	
<b>Input</b>	K
<b>Output</b>	E
<b>Ground</b>	A B C D F G H I J L

**Testing Environment:**



PIN Descriptions	
<b>Input</b>	L1=55nH C1=23pF
<b>Output</b>	L2=54nH C2=23.3pF
<b>Source/Load Impedance</b>	50 Ω



### Response Plot:

