



315 MHz Remote Control, RF Saw Filter



ANATECH ELECTRONICS INC
RF & Microwave Filters & Products

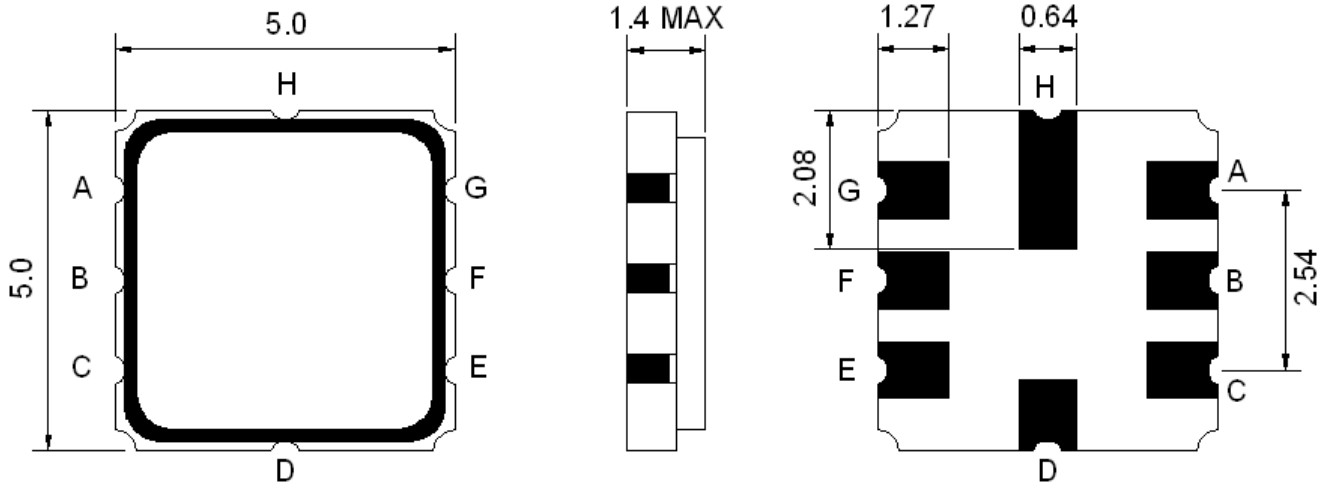
Part Number: AM315S428

Parameters Description	Unit	Minimum	Typical	Maximum
Center Frequency (Fo)	MHz	-	315.0	-
Insertion Loss at Fo	dB	-	2.0	4.0
Passband (Relative to IL min)				
314.77 ~ 315.2 MHz	dB	-	1.5	3.0
314.71 ~ 315.26 MHz	dB	-	2.0	6.0
3dB Passband Width (Relative to IL Min)	MHz	0.8	0.92	-
Stop Band Attenuation:				
10 ~ 270.0 MHz	dB	45	55	-
270.0 ~ 309.0 MHz	dB	30	35	-
309.0 ~ 313.94 MHz	dB	15	20	-
316.0 ~ 335.0 MHz	dB	10	15	-
335.0 ~ 400.0 MHz	dB	35	45	-
400.0 ~ 1000.0 MHz	dB	45	55	-

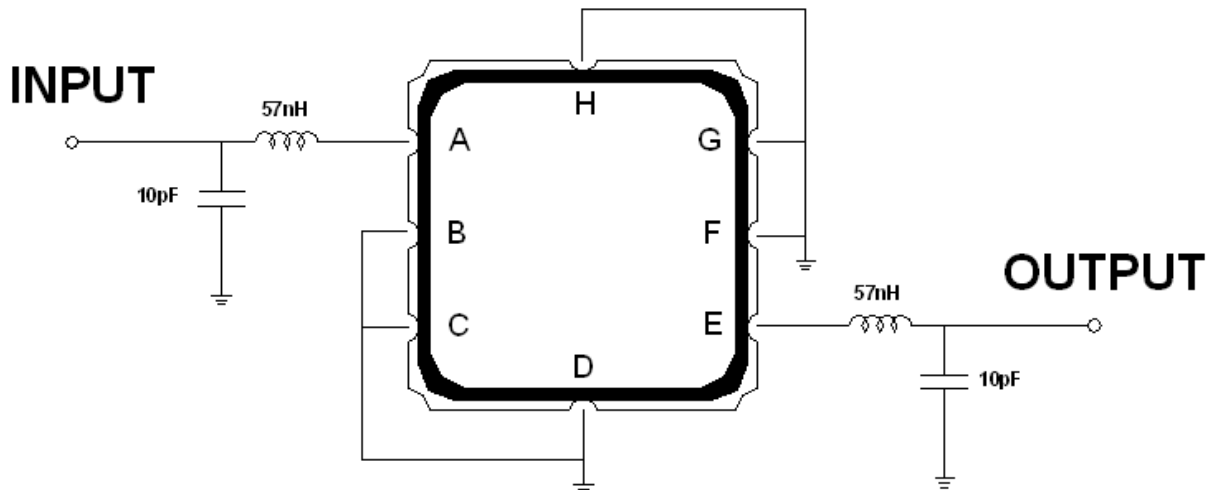
Parameters Description	Unit	Minimum	Typical	Maximum
Operation Temperature Range	°C	-40	-	+105
Storage Temperature Range	°C	-40	-	+85
Maximum DC Voltage	V	-	-	10
Maximum Input Power	dBm	-	-	0
Source Impedance (Single Ended) ₁	Ω	-	50	-
Load Impedance (Single Ended) ₁	Ω	-	50	-
Package Size and Type	5.0 x 5.0 x 1.4 mm		K	



Outline Drawing:



Testing Environment:



Source/Load Impedance: 50 Ω