



ANATECH ELECTRONICS INC
RF & Microwave Filters & Products

325 MHz Wireless, RF Saw Filter

Part Number: AM325S433

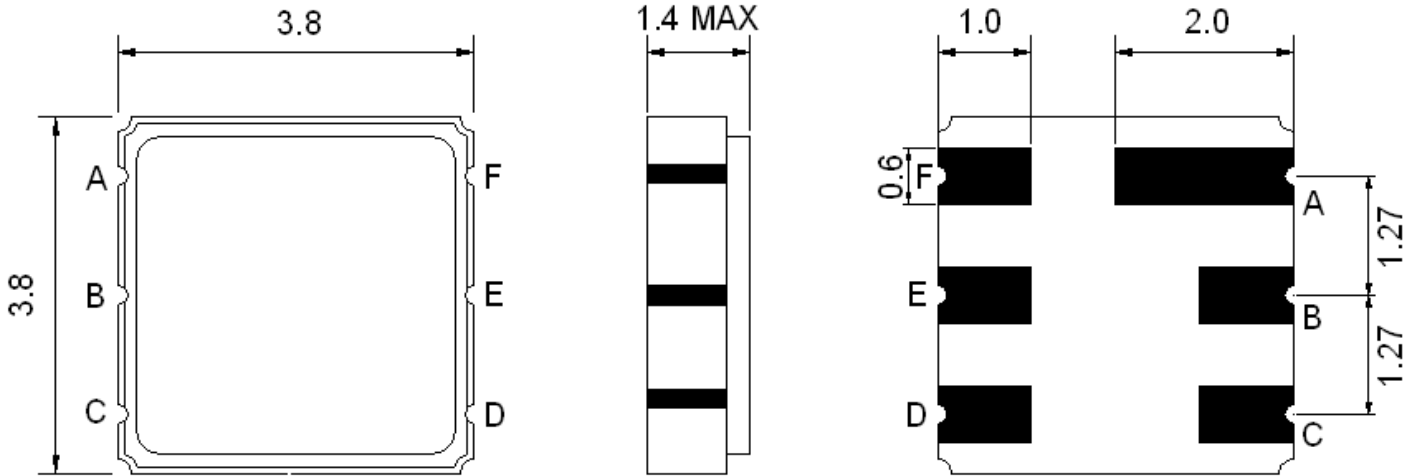


Parameters Description	Unit	Minimum	Typical	Maximum
Center Frequency (Fo)	MHz	-	325.3	-
Insertion Loss within 322.0 ~ 328.6 MHz	dB	-	2.5	3.5
Amplitude Ripple within 322.5 ~ 328.6 MHz	dB _{p-p}	-	0.8	1.5
Attenuation:				
Fo-100.0 ~ Fo-39.5 MHz	dB	40	50	-
Fo+39.5 ~ Fo+100.0 MHz	dB	50	60	-

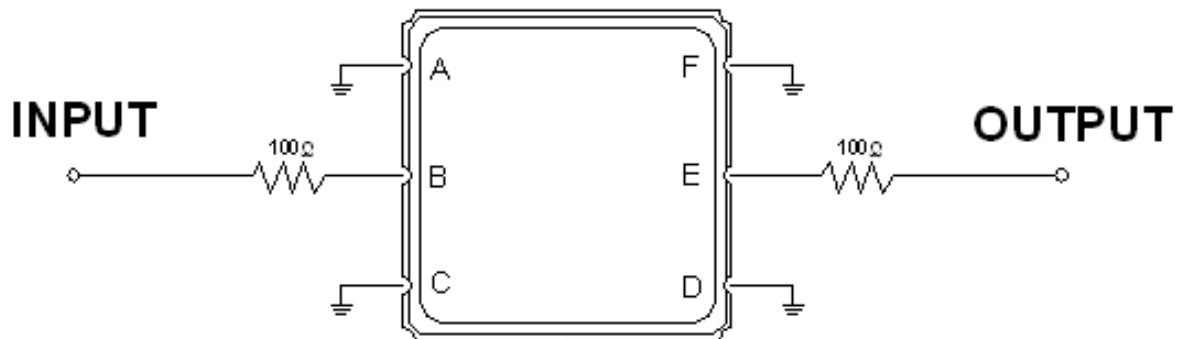
Parameters Description	Unit	Minimum	Typical	Maximum
Operation Temperature Range	°C	-30	-	+65
Storage Temperature Range	°C	-40	-	+85
Maximum DC Voltage	V	-	-	10
Maximum Input Power	dBm	-	-	0
Source Impedance (Single Ended) ₁	Ω	-	150	-
Load Impedance (Single Ended) ₁	Ω	-	150	-
Package Size and Type	3.8 x 3.8 x 1.4 mm		P	



Outline Drawing:



Testing Environment:



Source/Load Impedance: 50 Ω



ANATECH ELECTRONICS INC
RF & Microwave Filters & Products

325 MHz Wireless, RF Saw Filter

Part Number: AM325S433



Response Plot:

