

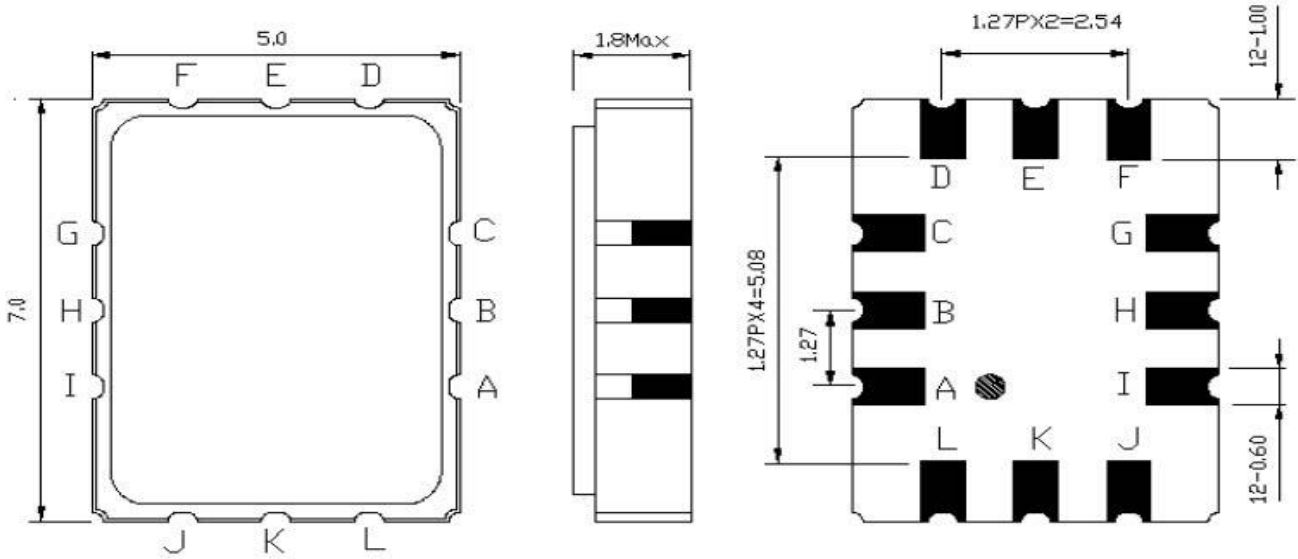


| Parameters Description | Unit | Minimum | Typical | Maximum |
|---|-------------------|---------|---------|---------|
| Center Frequency (Fo) | MHz | - | 338.0 | - |
| Insertion Loss | dB | - | 11.0 | 15.0 |
| Amplitude Ripple within 328.0 – 348.0 MHz | dB _{p-p} | - | 0.50 | 1.00 |
| Group Delay within 328.0 – 348.0 MHz | nsec | - | 40 | 90 |
| Absolute Group Delay at Fo | nsec | 250 | 550 | 750 |
| Temperature Coefficient | ppm/°C | - | -86 | - |
| 1 dB Bandwidth | MHz | 20.0 | 26.5 | - |
| Relative Attenuation: | | | | |
| 288 MHz | dB | 40 | 45 | - |
| 388 MHz | dB | 40 | 45 | - |

| Parameters Description | Unit | Minimum | Typical | Maximum |
|--|--------------------|---------|---------|---------|
| Operation Temperature Range | °C | -40 | - | +85 |
| Storage Temperature Range | °C | -40 | - | +85 |
| Maximum DC Voltage | V | - | - | 0 |
| Maximum Input Power | dBm | - | - | 10 |
| Source Impedance (Single Ended) ₁ | Ω | - | 50 | - |
| Load Impedance (Single Ended) ₁ | Ω | - | 50 | - |
| Package Size and Type | 7.0 x 5.0 x 1.8 mm | | S1 | |

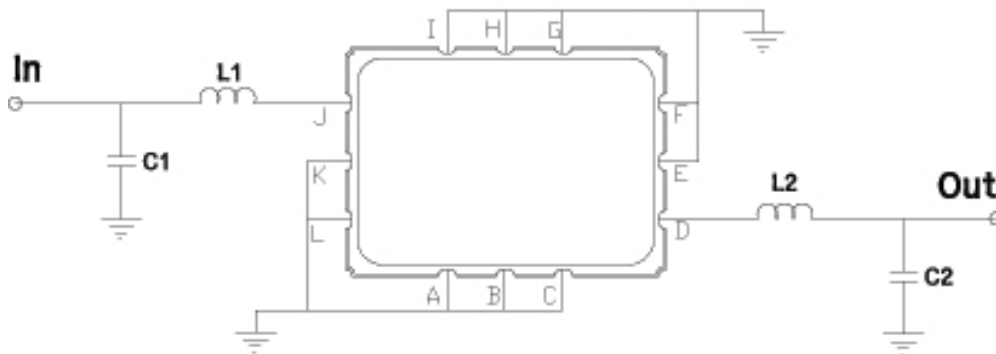


Outline Drawing:



| PIN Descriptions: | |
|------------------------------|--------|
| J | Input |
| D | Output |
| A, B, C, E, F, G, H, I, K, L | Ground |

Testing Environment:



Input: L1=TBD C1=TBD
 Output: L2=TBD C2=TBD
 Source/Load Impedance: 50 Ω