



ANATECH ELECTRONICS INC
RF & Microwave Filters & Products

340 MHz Saw Filter

Part Number: AM340S832

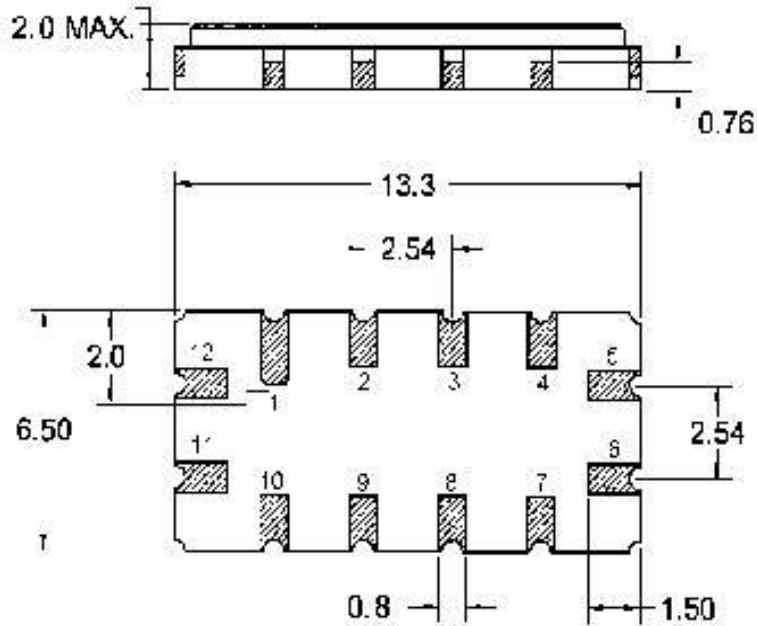


Parameters Description	Unit	Minimum	Typical	Maximum
Center Frequency (Fo)	MHz	-	340.0	-
Insertion Loss	dB	-	16.80	18.50
Passband Ripple (Δ Fo \pm 4.73 MHz)	dB	-	1.00	-
Group Delay Variation (Δ Fo \pm 4.73 MHz)	nsec	-	50	70
Absolute Delay	μ sec	-	0.70	-
Temperature Coefficient	ppm/ $^{\circ}$ C	-	-20	-
1 dB Bandwidth	MHz	9.46	9.65	-
3 dB Bandwidth	MHz	-	11.16	-
20 dB Bandwidth	MHz	-	14.21	-
40 dB Bandwidth	MHz	-	16.11	16.50
Relative Attenuation Δ Fo \pm 8.23 MHz	dB	-	43	-
Substrate Material	LiTaO ₃			

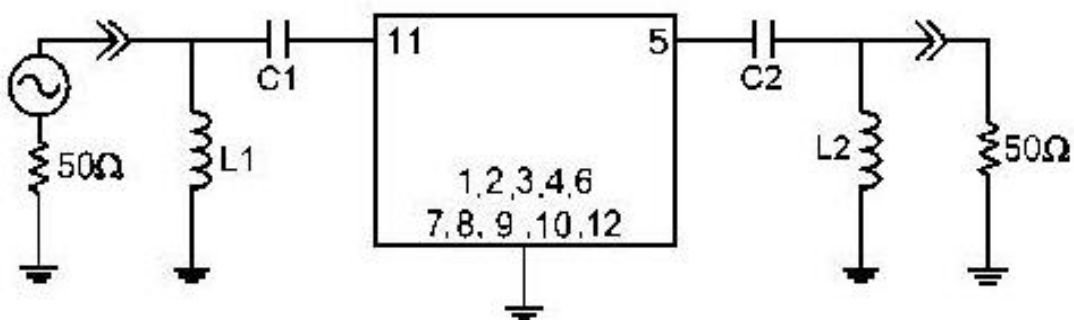
Parameters Description	Unit	Minimum	Typical	Maximum
Operation Temperature Range	$^{\circ}$ C	-40	-	+85
Storage Temperature Range	$^{\circ}$ C	-40	-	+85
Maximum DC Voltage	V	-	-	0
Maximum Input Power	dBm	-	-	10
Source Impedance (Single Ended) ₁	Ω	-	50	-
Load Impedance (Single Ended) ₁	Ω	-	50	-



Outline Drawing:



Testing Environment:



50Ω Single-ended

$C1=C2=24\text{pF}$, $L1=L2=6.8\text{nH}$

Source / Load Impedance = 50Ω

Ambient Temperature = 25°C

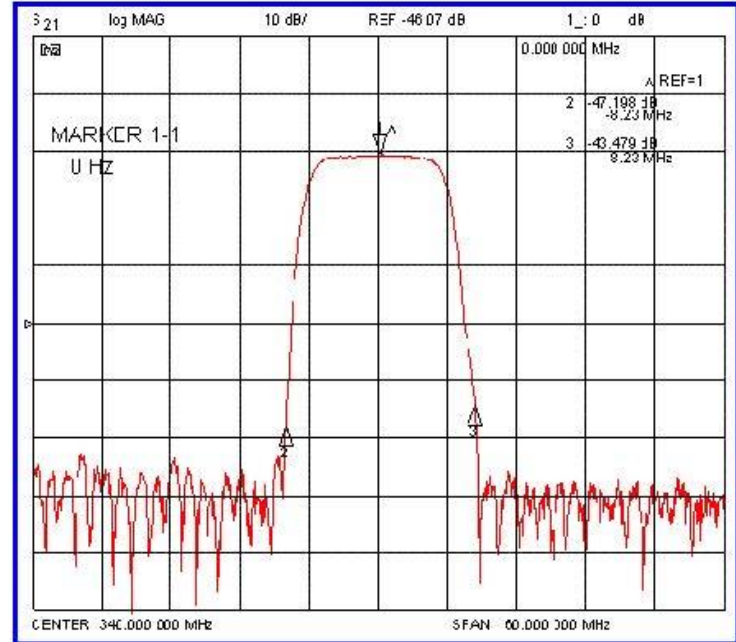
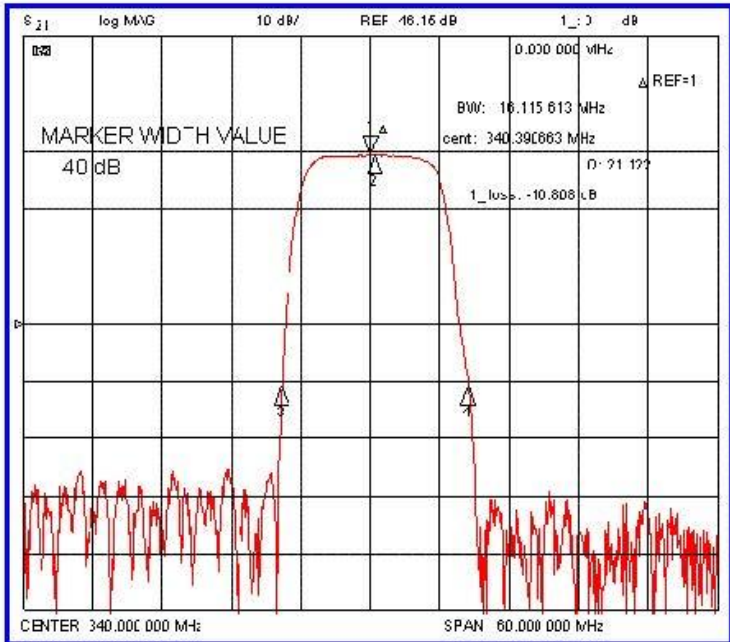
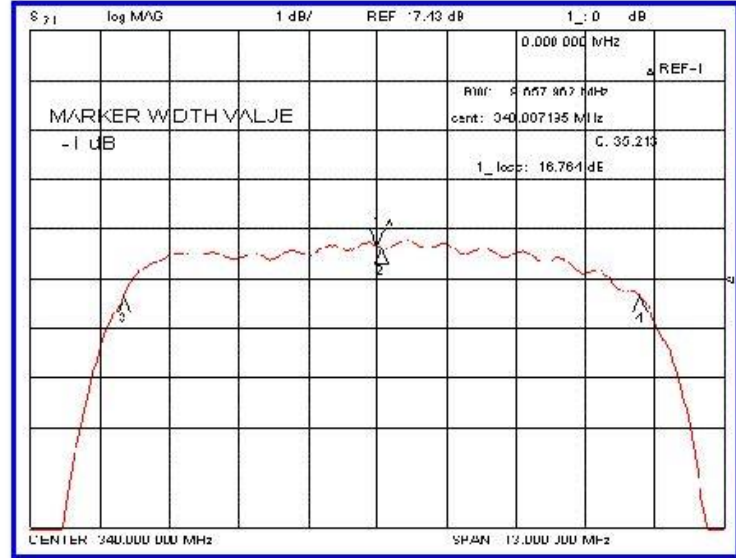
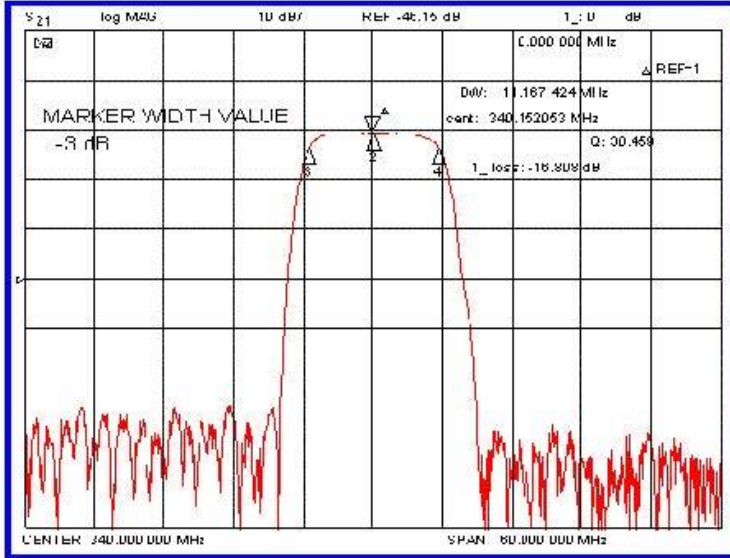


340 MHz Saw Filter

Part Number: AM340S832



Response Plot:





Response Plot:

