



3.500 GHz Monoblock Ceramic BPF



ANATECH ELECTRONICS INC
RF & Microwave Filters & Products

Part Number: AM3500B1088

Electrical specifications

- Center Frequency:** 3500 MHz
- Bandwidth:** 200 MHz
- Input / Output Impedance:** 50 Ohms
- Passband:** 3400 – 3600 MHz
- Passband Insertion Loss:** 1.2 dB
- Passband Ripple:** 0.5 dB
- Passband Return Loss:** 15.0 dB
- Rejection 1:** 42 dB@3150 MHz
- Rejection 2:** 46 dB@3800 MHz
- Power Handling:** 1 Watt max

Mechanical

- Mounting Method:** SMT
- Dimensions:** 6.8 x 5.7 x 2.4 mm

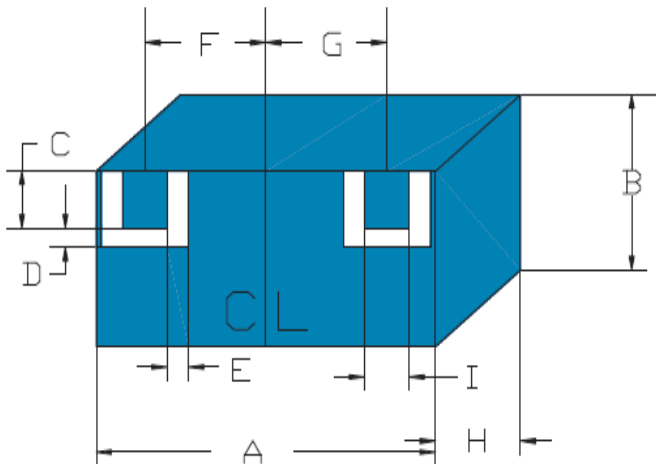
Environmental

- Operating Temperature:** -40°C to +85°C
- Storage Temperature:** -50°C to +90°C



This product is RoHs compliant.

Mechanical Drawing



Dim	Nominal (mm)	Tolerance (mm) +/- or max
A	6.8	max
B	5.7	max
C	1.40	0.13
D	0.5	0.13
E	0.65	0.13
F	2.151	0.25
G	2.151	0.25
H	2.4	max
I	1.10	0.13



ANATECH ELECTRONICS INC
RF & Microwave Filters & Products

3.500 GHz Monoblock Ceramic BPF

Part Number: AM3500B1088



Response Plot:

