



# 35 MHz Saw Filter

## Part Number: AM35S798



Parameters Description	Unit	Minimum	Typical	Maximum
Center Frequency (Fo)	MHz	-	35.0	-
Insertion Loss at Fo	dB	-	11.0	15.0
Amplitude Ripple Variation	dB <sub>p-p</sub>	-	0.5	1.0
Group Delay Variation	nsec	-	85	150
Absolute Delay at Fo	µsec	-	1.15	-
Temperature Coefficient	ppm/°C	-	-86	-
Bandwidth at -1.0 dB	MHz	-	2.8	-
Bandwidth at -3.0 dB	MHz	3.0	3.5	-
Bandwidth at -30.0 dB	MHz	-	5.6	5.9
<b>Relative Attenuation:</b>				
Lower Sidelobe	dB	-	45	-
Upper Sidelobe	dB	-	45	-

Parameters Description	Unit	Minimum	Typical	Maximum
Operation Temperature Range	°C	-40	-	+80
Storage Temperature Range	°C	-45	-	+85
Maximum DC Voltage	V	-	-	10
Maximum Input Power	dBm	-	-	10
Source Impedance (Single Ended) <sub>1</sub>	Ω	-	50	-
Load Impedance (Single Ended) <sub>1</sub>	Ω	-	50	-
Package Size	mm	13.3 x 6.5 x 1.8		

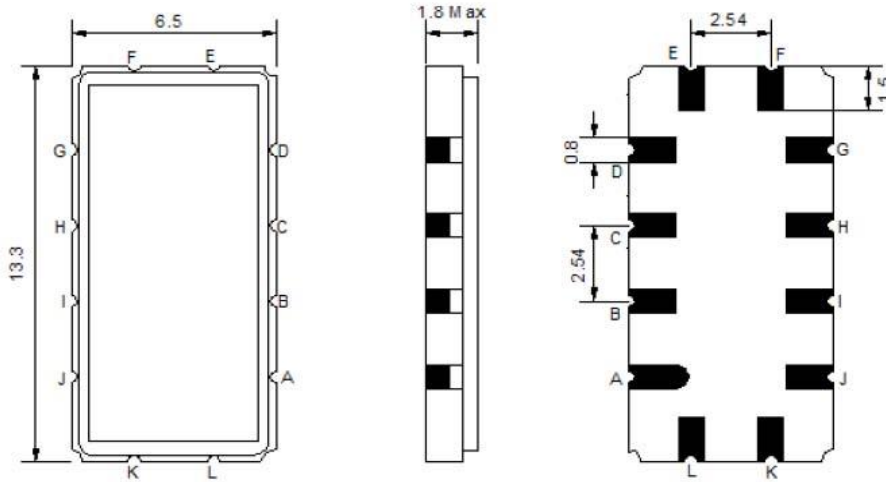


# 35 MHz Saw Filter

Part Number: AM35S798

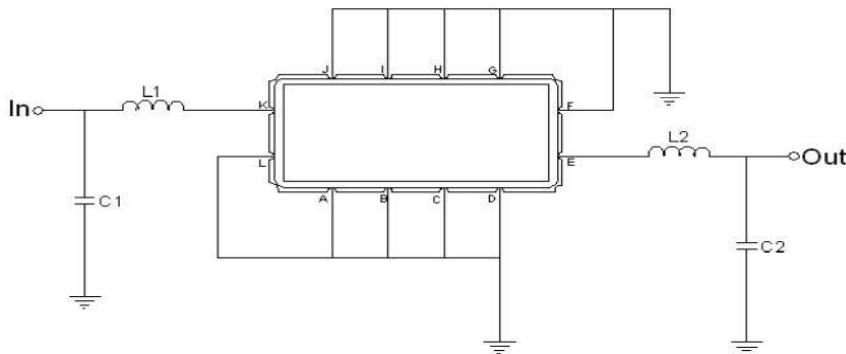


## Outline Drawing:



Pin Description	
A, B, C, D, F, G, H, I, J, L	Ground
K	Input
E	Output

## Testing Environment:



Test Fixture & Values	
<b>Input</b>	L1=150 nH , C1=0 pF
<b>Output</b>	L2=150 nH , C2=0 pF
<b>Source/Load Impedance</b>	50 Ω



# 35 MHz Saw Filter

Part Number: AM35S798



## Frequency Response:

