



433 MHz Remote Control, RF Saw Filter

Part Number: AM433S464



ANATECH ELECTRONICS INC
RF & Microwave Filters & Products

Parameters Description	Unit	Minimum	Typical	Maximum
Center Frequency (Fo)	MHz	-	433.92	-
Insertion Loss within 433.8 ~ 434.12 MHz	dB	-	2.2	4.0
Relative Passband:				
433.76 ~ 434.08 MHz	dB	-	-	2.0
433.74 ~ 434.10 MHz	dB	-	-	3.0
433.68 ~ 434.16 MHz	dB	-	-	6.0
Relative Pass Bandwidth (BW ₃)	kHz	670	720	-
Relative Attenuation:				
10.0 ~ 414.0 MHz	dB	45	48	-
414.0 ~ 428.0 MHz	dB	40	43	-
428.0 ~ 432.92 MHz	dB	15	19	-
434.92 ~ 442.0 MHz	dB	10	14	-
442.0 ~ 550.0 MHz	dB	35	38	-
550.0 ~ 1000.0 MHz	dB	45	50	-
Turnover To	deg°C	-	25	-

Parameters Description	Unit	Minimum	Typical	Maximum
Operation Temperature Range	°C	-45	-	+120
Storage Temperature Range	°C	-40	-	+85
Maximum DC Voltage	V	-	-	0
Maximum Input Power	dBm	-	-	10
Source Impedance (Single Ended) ₁	Ω	-	50	-
Load Impedance (Single Ended) ₁	Ω	-	50	-
Package Size and Type	5.0 x 5.0 x 1.4 mm		K	



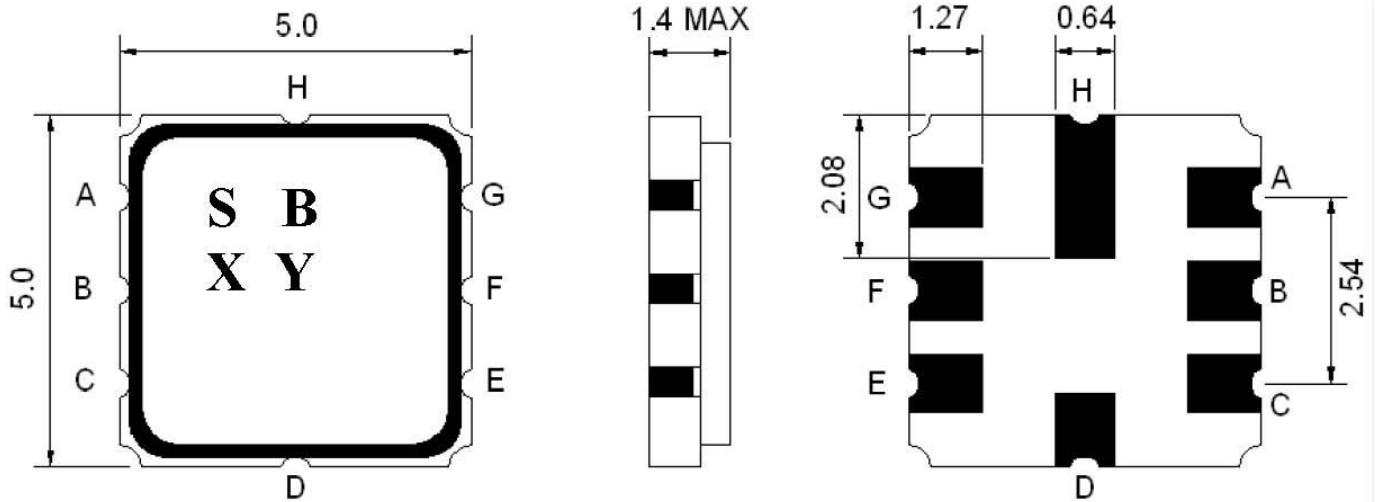
433 MHz Remote Control, RF Saw Filter

Part Number: AM433S464

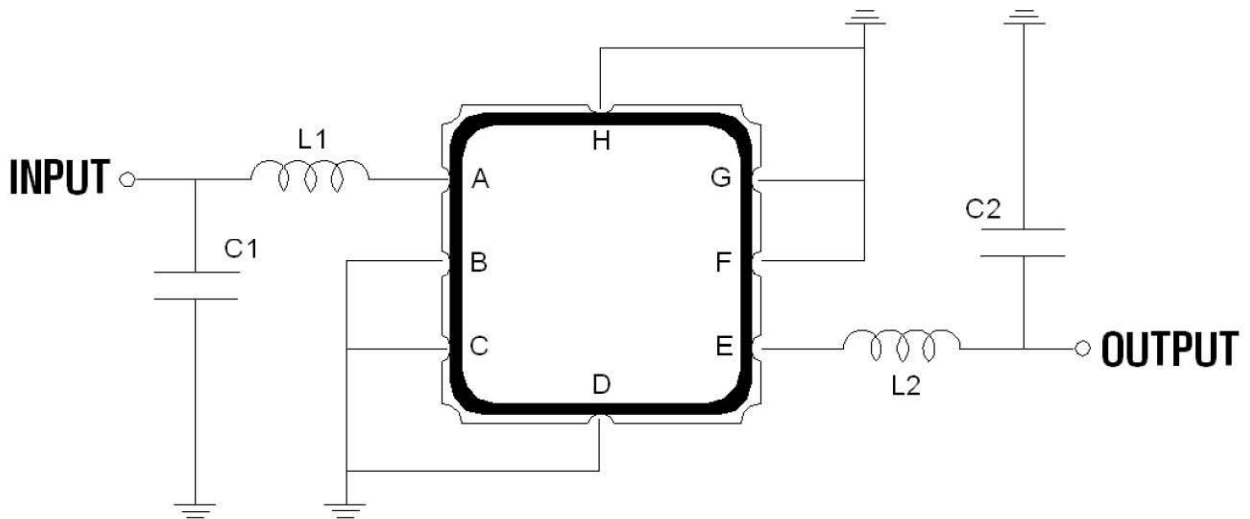


ANATECH ELECTRONICS INC
RF & Microwave Filters & Products

Outline Drawing:



Testing Environment:



L1=39nH , L2=39nH

C1=3.0pF , C2=3.0pF



Response Plot:

