



ANATECH ELECTRONICS INC
RF & Microwave Filters & Products

433 MHz Remote Control, RF Saw Filter

Part Number: AM433S465

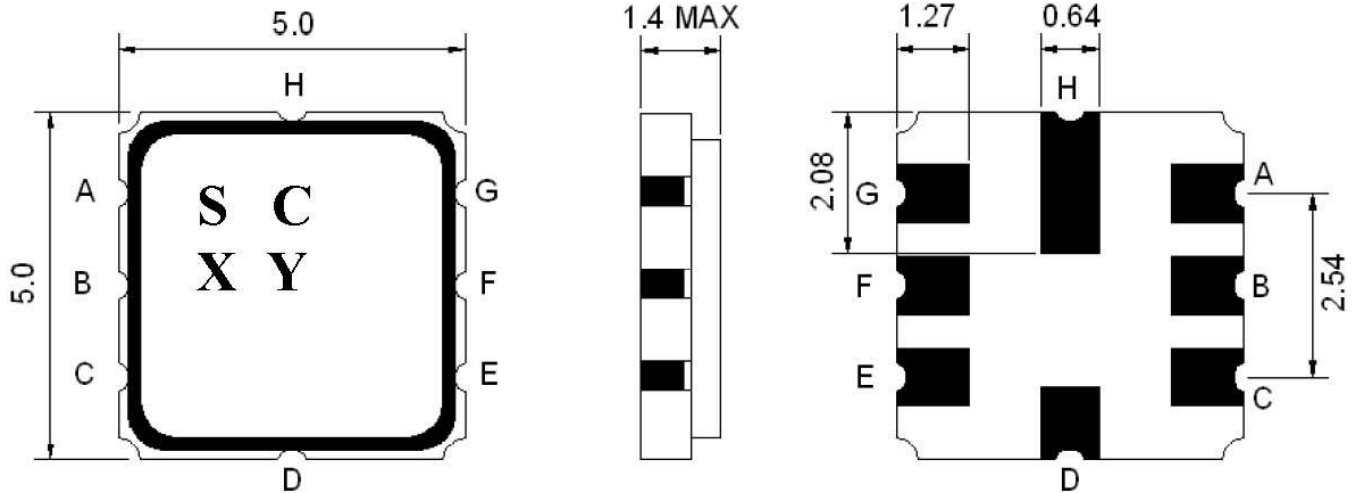


Parameters Description	Unit	Minimum	Typical	Maximum
Center Frequency (Fo)	MHz	-	433.92	-
Insertion Loss within 433.76 ~ 434.16 MHz	dB	-	2.0	4.5
Passband Ripple within 433.76 ~ 434.16 MHz	dB	-	1.0	2.0
Relative Attenuation:				
10.0 ~ 414.0 MHz	dB	45	50	-
414.0 ~ 428.0 MHz	dB	40	45	-
428.0 ~ 432.92 MHz	dB	15	20	-
434.92 ~ 442.0 MHz	dB	10	15	-
442.0 ~ 550.0 MHz	dB	35	40	-
550.0 ~ 1000.0 MHz	dB	45	50	-

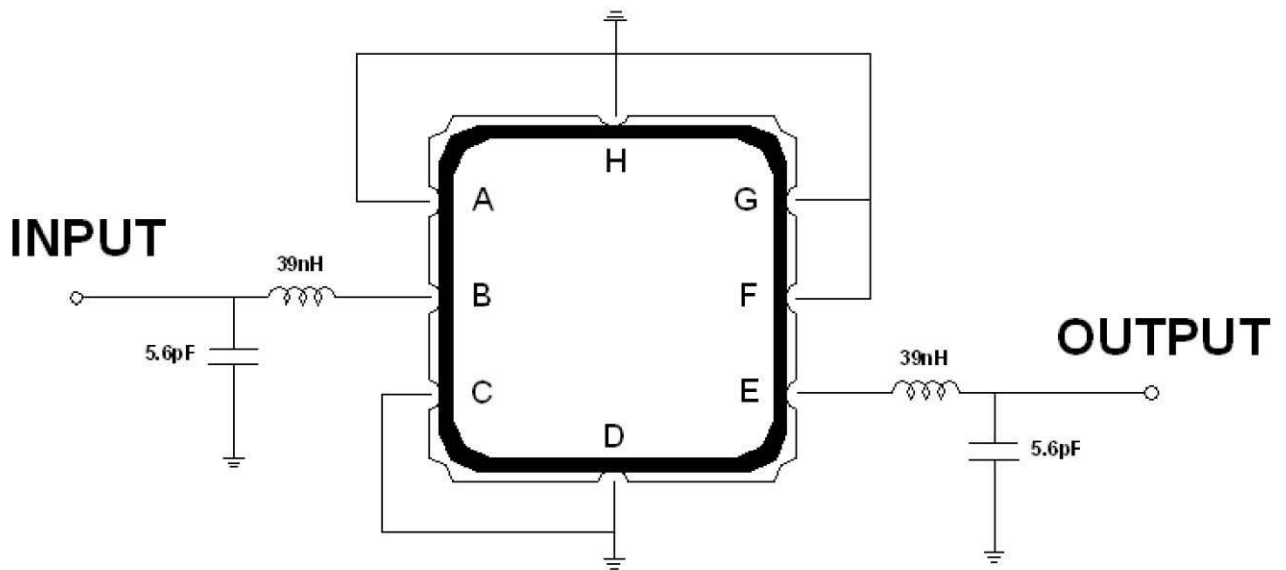
Parameters Description	Unit	Minimum	Typical	Maximum
Operation Temperature Range	°C	-40	-	+85
Storage Temperature Range	°C	-40	-	+85
Maximum DC Voltage	V	-	-	10
Maximum Input Power	dBm	-	-	10
Source Impedance (Single Ended) ₁	Ω	-	50	-
Load Impedance (Single Ended) ₁	Ω	-	50	-
Package Size and Type	5.0 x 5.0 x 1.4 mm		K	



Outline Drawing:



Testing Environment:



Source & Load Impedance: 50 Ω



Response Plot:

