



446 MHz Wireless, RF Saw Filter

Part Number: AM446S472

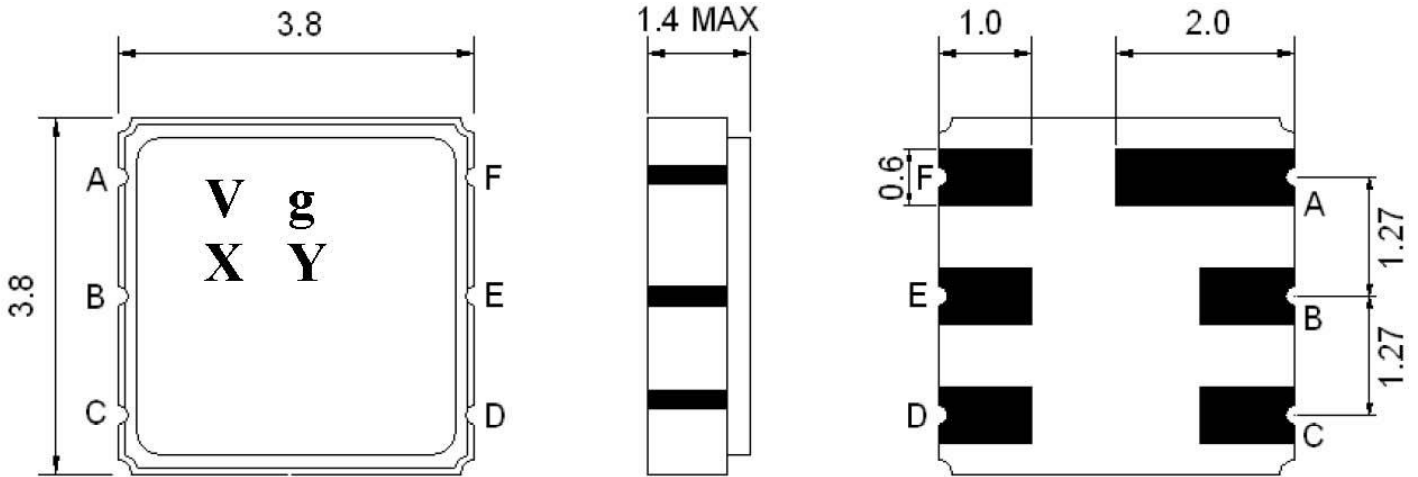


Parameters Description	Unit	Minimum	Typical	Maximum
Center Frequency (Fo)	MHz	-	446.0	-
Insertion Loss within 432 ~ 436 MHz	dB	-	1.5	3.0
Amplitude Ripple within 432 ~ 436 MHz	dBp-p	-	0.8	2.0
Attenuation:				
DC ~ Fo-42.8 MHz	dB	50	55	-
Fo+40 ~ Fo+200 MHz	dB	50	55	-
Terminating Impedance	Ω/pF	150/0		

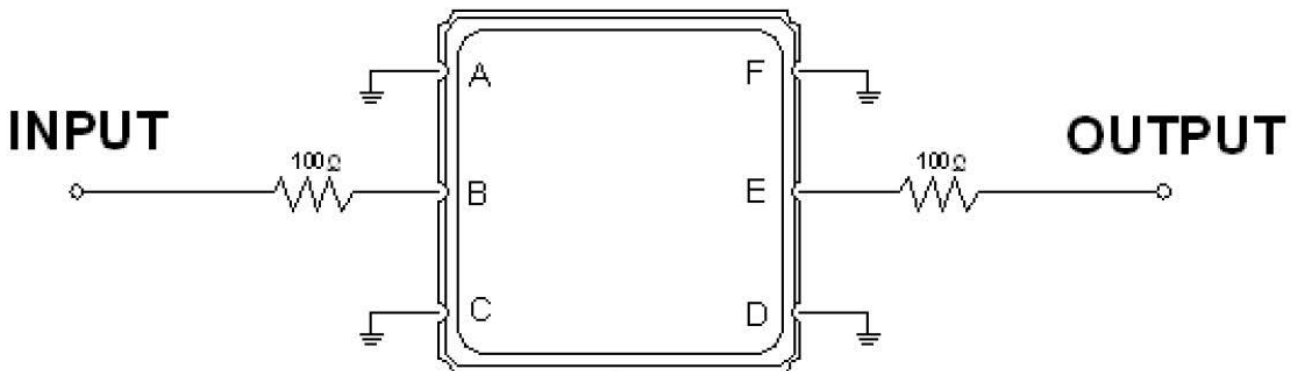
Parameters Description	Unit	Minimum	Typical	Maximum
Operation Temperature Range	$^{\circ}C$	-10	-	+60
Storage Temperature Range	$^{\circ}C$	-40	-	+85
Maximum DC Voltage	V	-	-	0
Maximum Input Power	dBm	-	-	0
Source Impedance (Single Ended) ₁	Ω	-	150	-
Load Impedance (Single Ended) ₁	Ω	-	150	-
Package Size and Type	3.8 x 3.8 x 1.4 mm P			



Outline Drawing:



Testing Environment:



Source & Load Impedance: 50 Ω



Frequency Response:

