



ANATECH ELECTRONICS INC
RF & Microwave Filters & Products

448 MHz Wireless, RF Saw Filter

Part Number: AM448S474

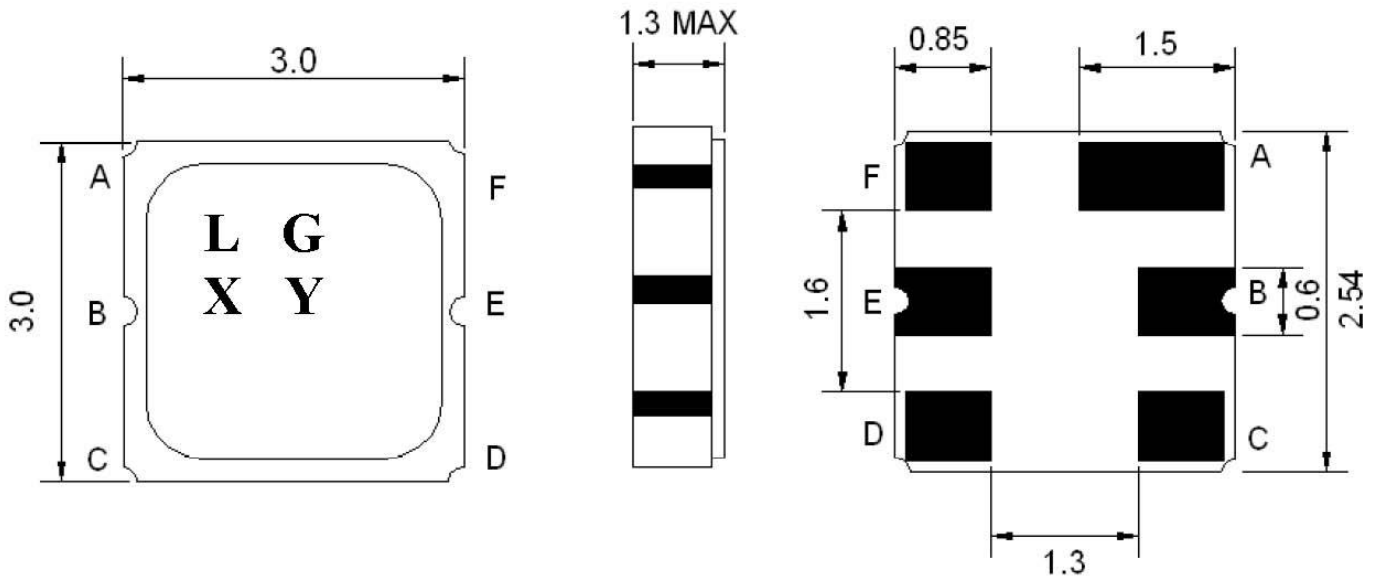


Parameters Description	Unit	Minimum	Typical	Maximum
Center Frequency (Fo)	MHz	-	448.0	-
Insertion Loss within 446 ~ 450 MHz	dB	-	2.6	3.2
Amplitude Ripple within 446 ~ 450 MHz	dB _{p-p}	-	0.5	1.5
Attenuation:				
Fo-200 ~ Fo-60.0 MHz	dB	50	50	-
Fo+42.8 ~ Fo+200 MHz	dB	50	55	-

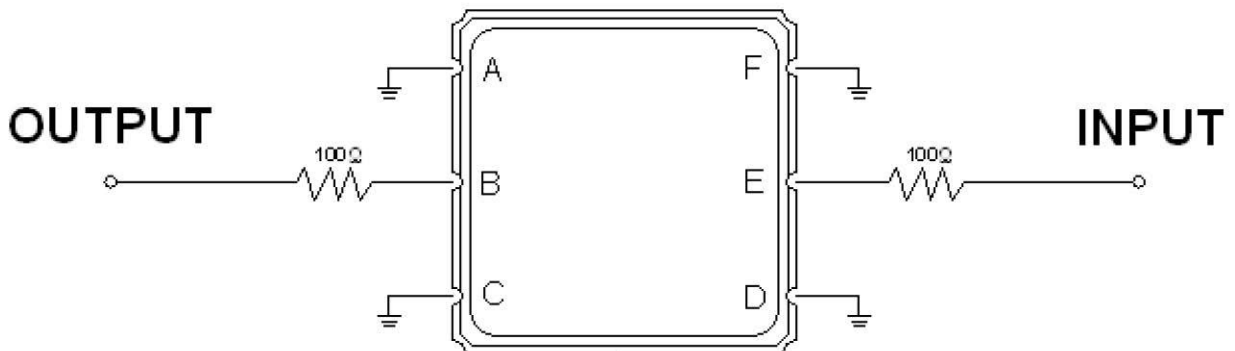
Parameters Description	Unit	Minimum	Typical	Maximum
Operation Temperature Range	°C	-30	-	+65
Storage Temperature Range	°C	-40	-	+85
Maximum DC Voltage	V	-	-	5
Maximum Input Power	dBm	-	-	15
Source Impedance (Single Ended) ₁	Ω	-	150	-
Load Impedance (Single Ended) ₁	Ω	-	150	-
Package Size and Type	3.0 x 3.0 x 1.3 mm		M	



Outline Drawing:



Testing Environment:



Source & Load Impedance: 50 Ω