



448 MHz Wireless, RF Saw Filter

Part Number: AM448S476

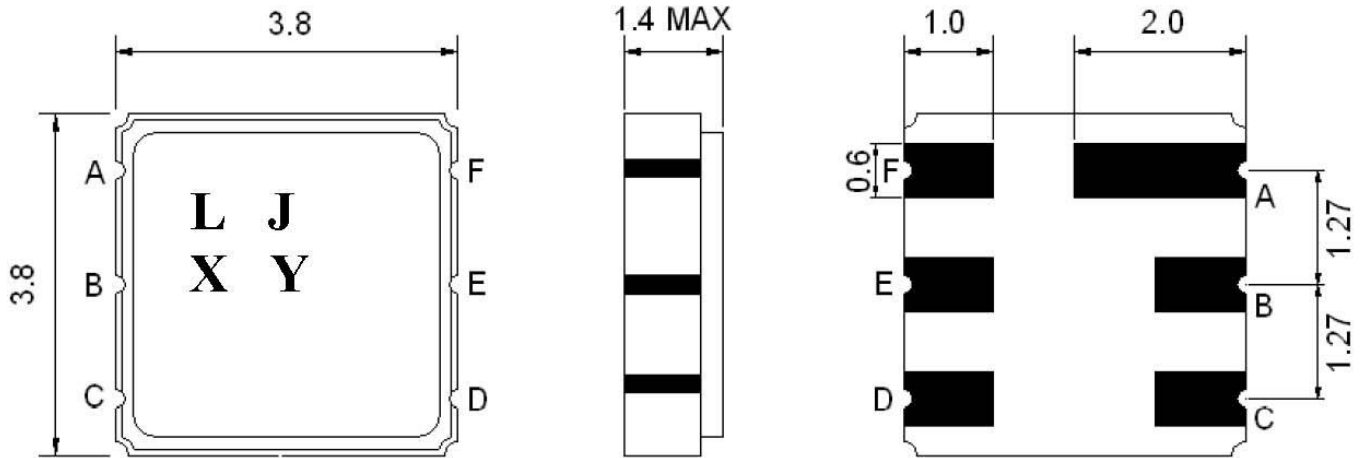


Parameters Description	Unit	Minimum	Typical	Maximum
Center Frequency (Fo)	MHz	-	448.0	-
Insertion Loss within 446 ~ 450 MHz	dB	-	1.6	3.5
Amplitude Ripple within 446 ~ 450 MHz	dB _{p-p}	-	0.6	2.0
Attenuation:				
Fo-200 ~ Fo-42.8 MHz	dB	50	55	-
Fo+40 ~ Fo+200 MHz	dB	50	55	-
Terminating Impedance	Ω/pF	50/0		

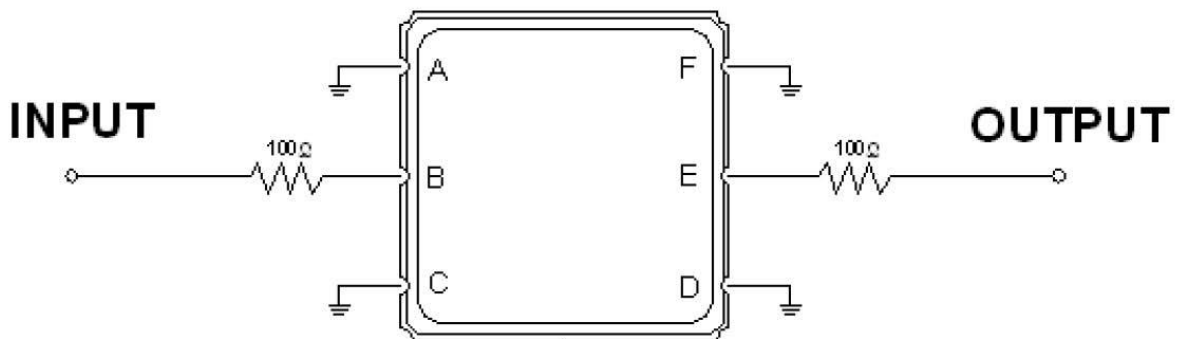
Parameters Description	Unit	Minimum	Typical	Maximum
Operation Temperature Range	°C	-30	-	+65
Storage Temperature Range	°C	-40	-	+85
Maximum DC Voltage	V	-	-	10
Maximum Input Power	dBm	-	-	0
Source Impedance (Single Ended) ₁	Ω	-	150	-
Load Impedance (Single Ended) ₁	Ω	-	150	-
Package Size and Type	3.8 x 3.8 x 1.4 mm P			



Outline Drawing:



Testing Environment:



Source & Load Impedance: 50 Ω