



48 MHz IF Saw Filter

Part Number: AM48S780

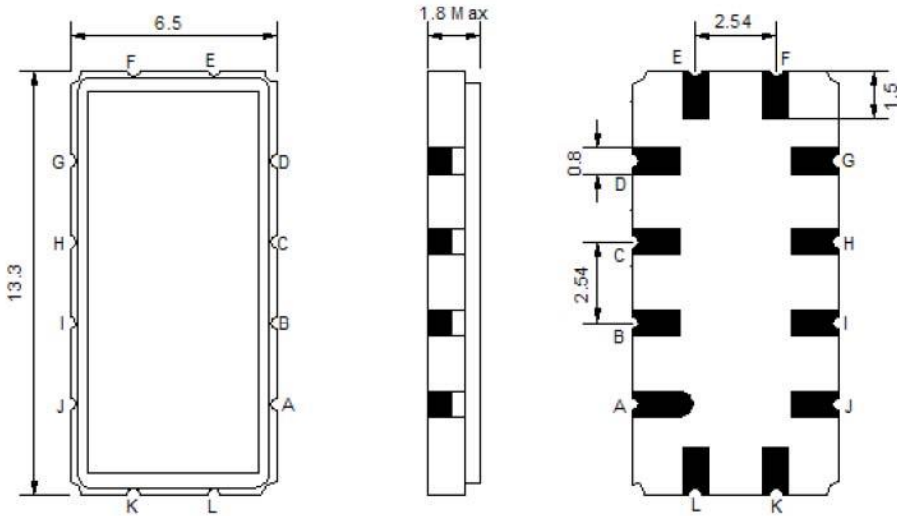


Parameters Description	Unit	Minimum	Typical	Maximum
Center Frequency (Fo)	MHz	-	48.0	-
Insertion Loss at Fo	dB	-	13.5	16.0
Amplitude Ripple within Fo ± 4.25 MHz	dBp-p	-	0.6	1.2
Group Delay Variation within Fo ± 4.25 MHz	nsec	-	120	220
Absolute Delay at Fo	µsec	-	1.55	-
Bandwidth at -1.0 dB	MHz	9.00	10.10	-
Bandwidth at -3.0 dB	MHz	-	10.50	-
Relative Attenuation (Ref.; Max IL)				
Fc ± 5.5 MHz	dB	-	5.5	-
Fc ± 7.75 MHz	dB	35	43	-
Fc ± 10.0 MHz	dB	40	53	-
Fc +15.0 to 25.0 MHz	dB	40	52	-
Fc -15.0 to 25.0 MHz	dB	40	68	-
Temperature Coefficient	ppm/°C	-	-86	-

Parameters Description	Unit	Minimum	Typical	Maximum
Operation Temperature Range	°C	-40	+25	+85
Storage Temperature Range	°C	-40	-	+85
Maximum DC Voltage	V	-	-	10
Maximum Input Power	dBm	-	-	10
Source Impedance (Single Ended) ₁	Ω	-	50	-
Load Impedance (Single Ended) ₁	Ω	-	50	-
Package Size and Type	13.3 x 6.5 x 1.8 mm		V	

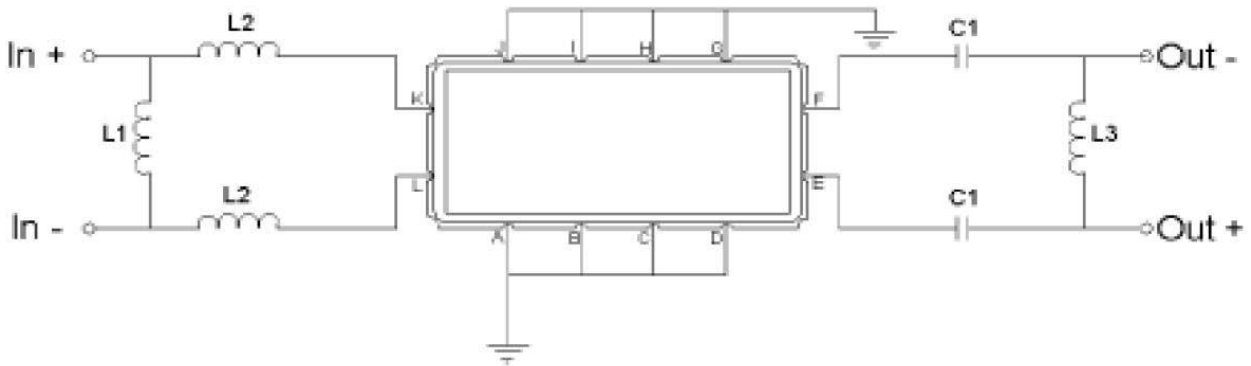


Outline Drawing:



Pin Description	
A B C D F G H I J L	Ground
K	Input +
L	Input -
E	Output +
F	Output -

Testing Environment:



Test Fixture & Values	
Input	L1=890nH , L2=47nH
Output	C1=36pF , L3=970nH
Source/Load Impedance	50/2000 Ω

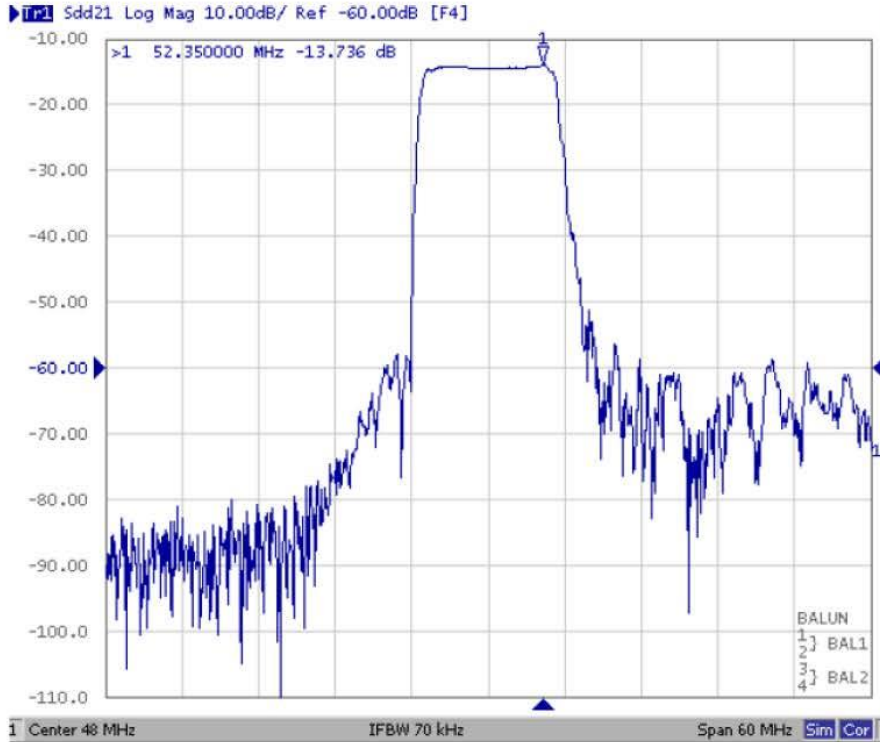


48 MHz IF Saw Filter

Part Number: AM48S780



Frequency Response:



Pass Band Response and Group Delay Variation

