



55 MHz IF Saw Filter 9 MHz Bandwidth

Part Number: AM55S747

ANATECH ELECTRONICS INC
RF & Microwave Filters & Products



Parameters Description	Unit	Minimum	Typical	Maximum
Center Frequency (Fo)	MHz	-	55.0	-
Insertion Loss at Fo	dB	-	24.8	26.5
Passband Ripple at Fo ± 4.42 MHz	dB	-	0.48	1.00
Group Delay Variation at Fo ± 4.42 MHz	nsec	-	36	80
Absolute Delay	µsec	-	2.35	-
Bandwidth at -1.0 dB	MHz	-	9.92	-
Bandwidth at -3.0 dB	MHz	-	10.30	-
Bandwidth at -40.0 dB	MHz	-	11.85	-
Ultimate Rejection	dB	-	50	-
Temperature Coefficient	ppm/°C	-	-72	-

Parameters Description	Unit	Minimum	Typical	Maximum
Operation Temperature Range	°C	0	-	+60
Storage Temperature Range	°C	-30	-	+80
Maximum DC Voltage	V	-	-	10
Maximum Input Power	dBm	-	-	10
Source Impedance (Single Ended) ₁	Ω	-	50	-
Load Impedance (Single Ended) ₁	Ω	-	50	-
Package Size and Type	20.0 x 9.8 x 1.8 mm		D1	



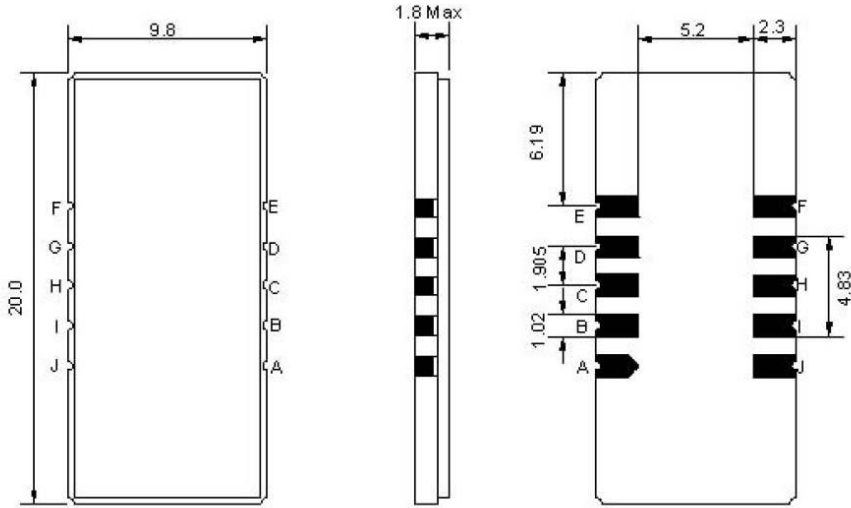
55 MHz IF Saw Filter 9 MHz Bandwidth

Part Number: AM55S747



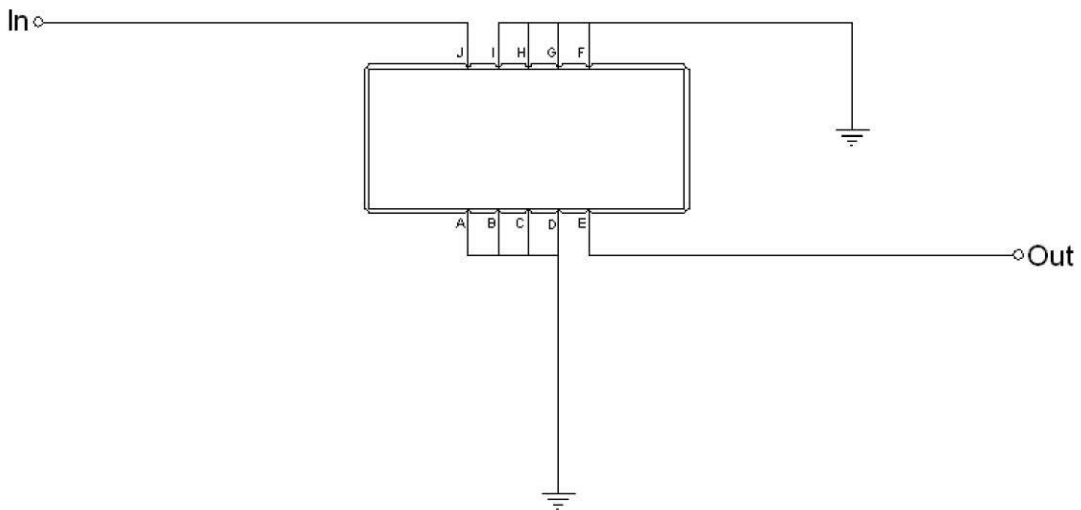
ANATECH ELECTRONICS INC
RF & Microwave Filters & Products

Outline Drawing:



Pin Description	
A B C D F G H I	Ground
J	Input
E	Output

Testing Environment:



Test Fixture & Values	
Source/Load Impedance	50 Ω



55 MHz IF Saw Filter 9 MHz Bandwidth

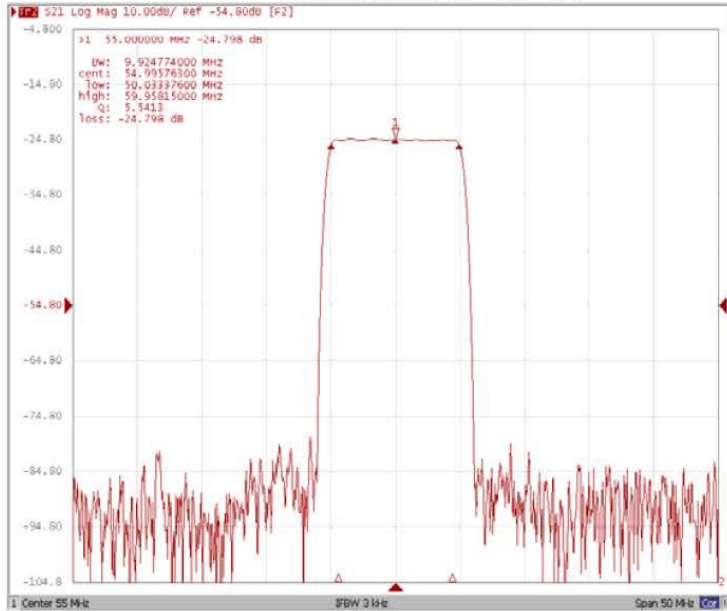
Part Number: AM55S747



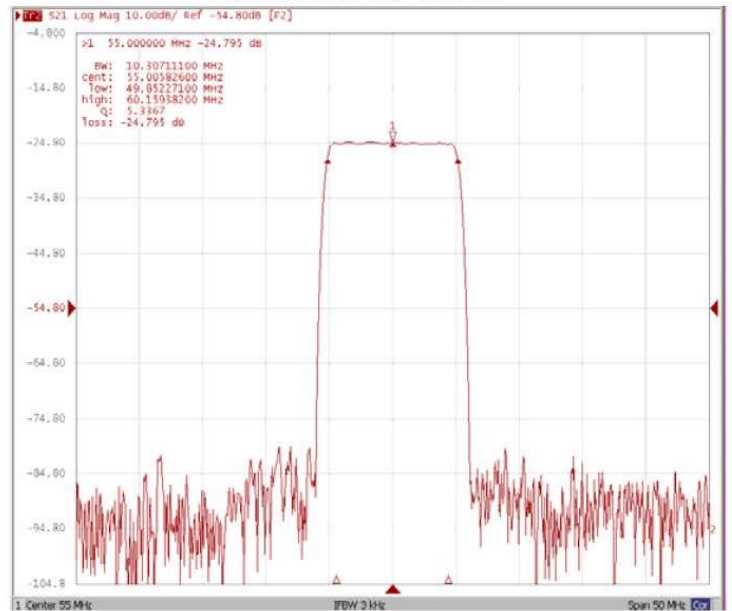
ANATECH ELECTRONICS INC
RF & Microwave Filters & Products

Frequency Response:

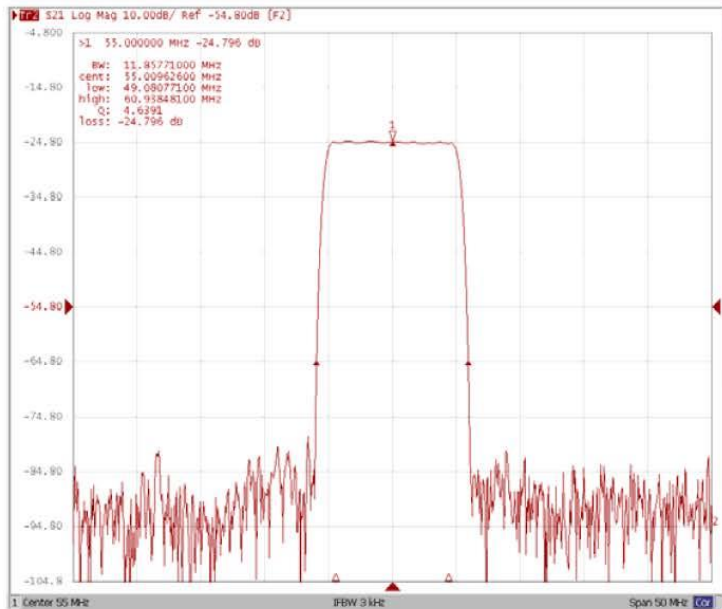
Bandwidth at -1.0 dB



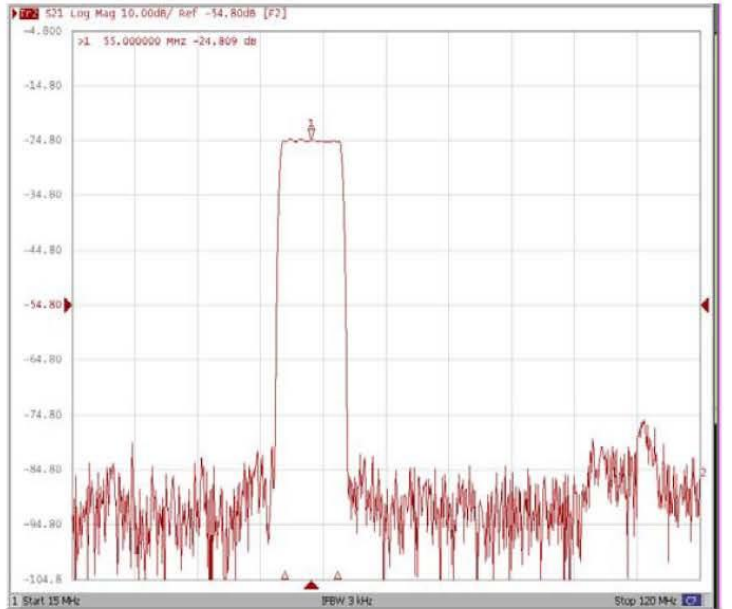
Bandwidth at -3.0 dB



Bandwidth at -40.0 dB



Wide Band



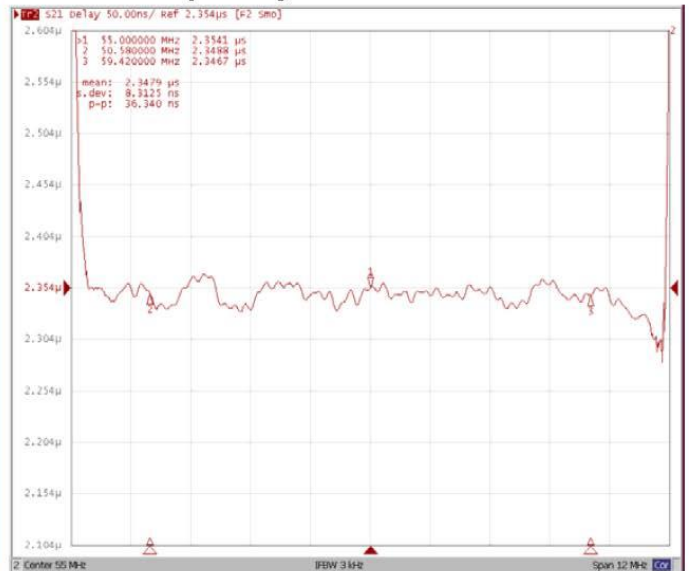


Frequency Response:

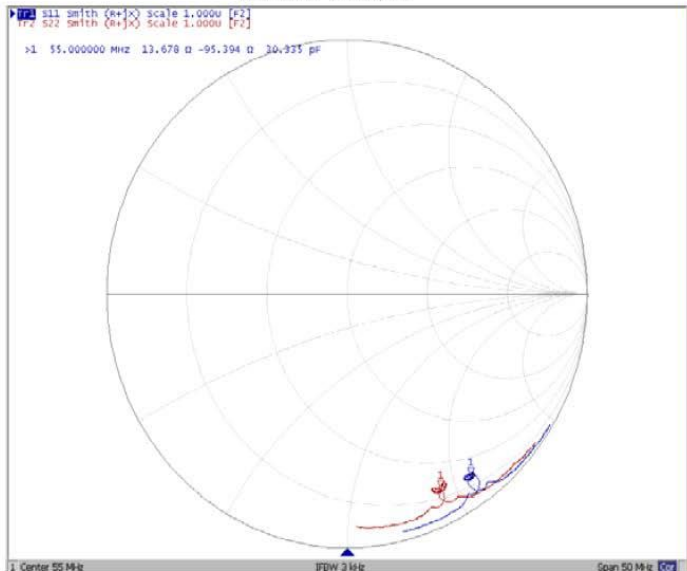
Ripple Variation Fo±4.42MHz



Group Delay Variation Fo±4.42MHz



Smith Chart



VSWR

