



ANATECH ELECTRONICS INC
RF & Microwave Filters & Products

55.0 MHz IF Saw Filter

Part Number: AM55S781

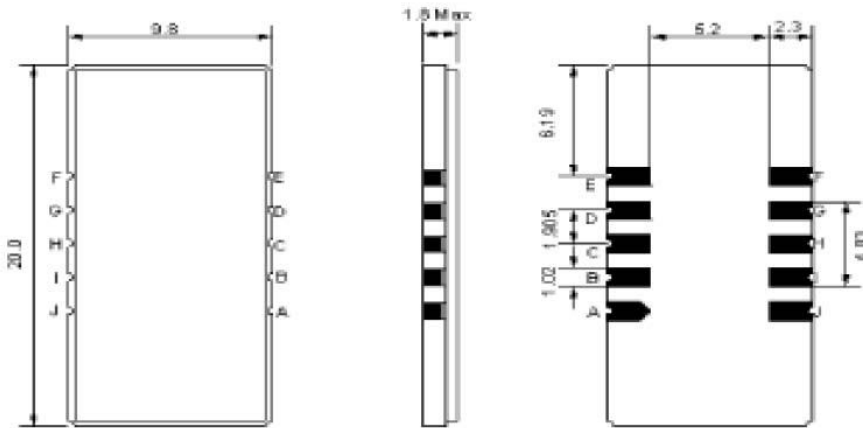


Parameters Description	Unit	Minimum	Typical	Maximum
Center Frequency (Fo)	MHz	54.90	55.0	55.10
Insertion Loss at Fo	dB	-	12.7	15.0
Passband Ripple at Fo ± 4.5 MHz	dB	-	0.40	1.00
Group Delay Variation at Fo ± 4.5 MHz	nsec	-	75	150
Absolute Delay at Fo	µsec	-	1.79	-
Bandwidth at -1.0 dB	MHz	9.80	10.00	-
Bandwidth at -3.0 dB	MHz	-	10.45	-
Bandwidth at -20.0 dB	MHz	-	11.55	-
Bandwidth at -40.0 dB	MHz	-	12.25	12.60
Ultimate Rejection	dB	-	45	-
Temperature Coefficient	ppm/°C	-	-86	-

Parameters Description	Unit	Minimum	Typical	Maximum
Operation Temperature Range	°C	0	-	+60
Storage Temperature Range	°C	-30	-	+80
Maximum DC Voltage	V	-	-	10
Maximum Input Power	dBm	-	-	10
Source Impedance (Single Ended) ₁	Ω	-	50	-
Load Impedance (Single Ended) ₁	Ω	-	50	-
Package Size and Type	20.0 x 9.8 x 1.8 mm		D1	

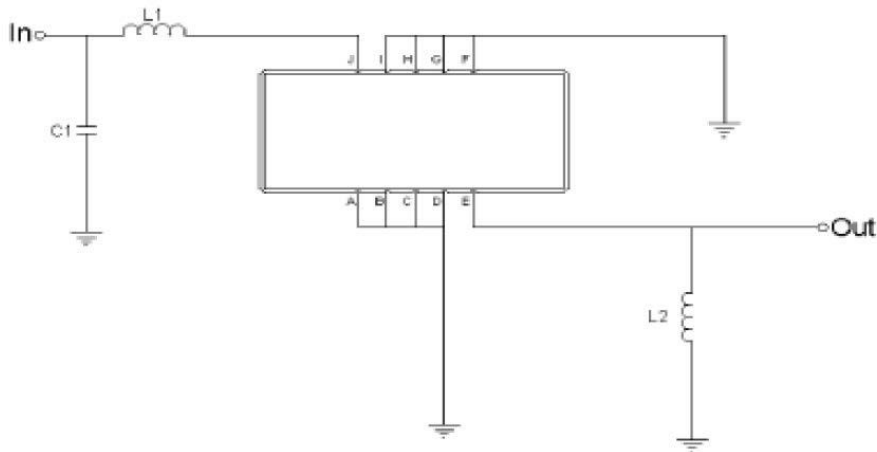


Outline Drawing:



Pin Description	
A B C D F G H I	Ground
J	Input
E	Output

Testing Environment:



Test Fixture & Values	
Input	L1=100nH, C1=50pF
Output	L2=56nH,
Source/Load Impedance	50 Ω



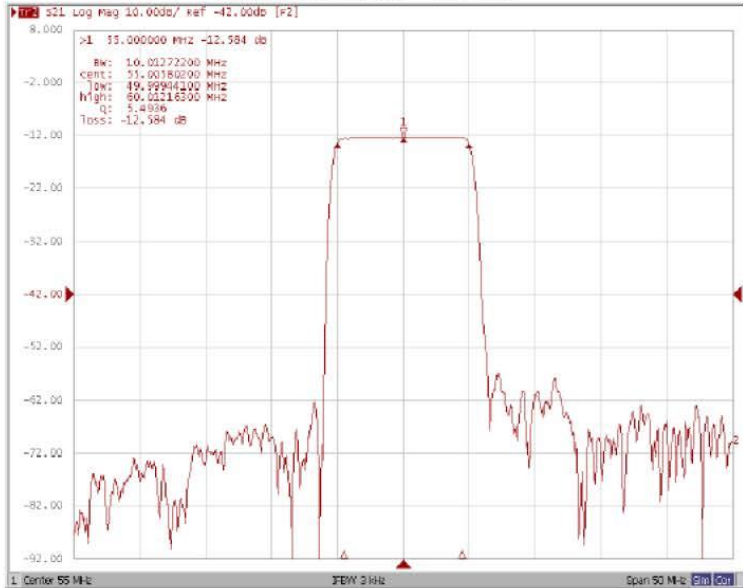
55.0 MHz IF Saw Filter

Part Number: AM55S781

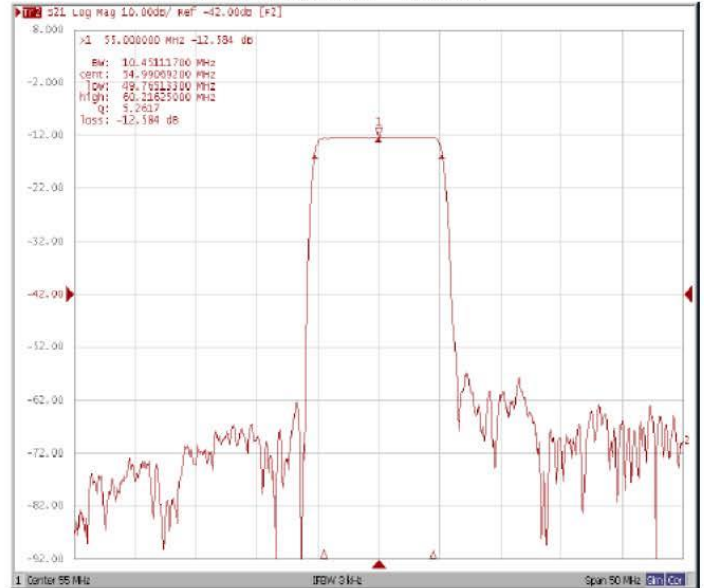


Frequency Response:

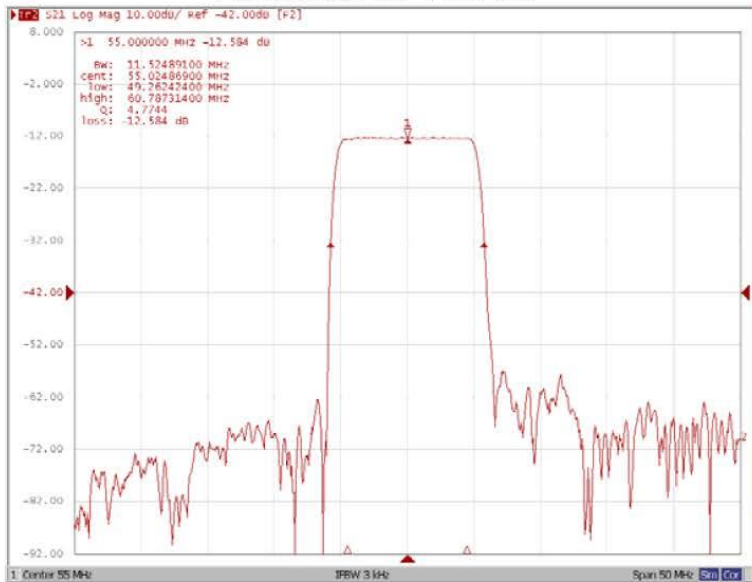
Bandwidth at -1.0 dB



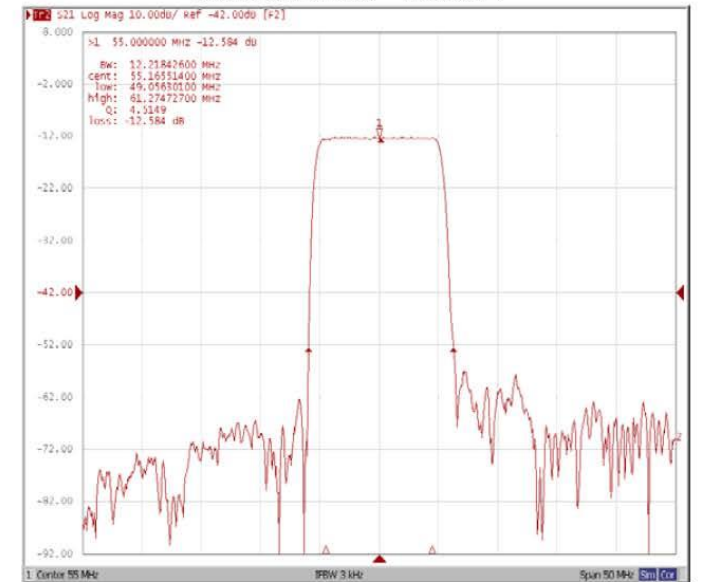
Bandwidth at -3.0 dB



Bandwidth at -20.0 dB



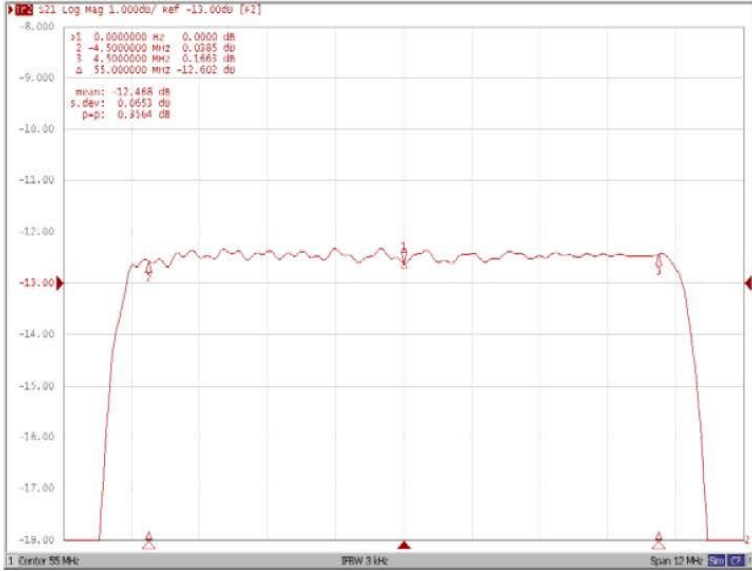
Bandwidth at -40.0 dB



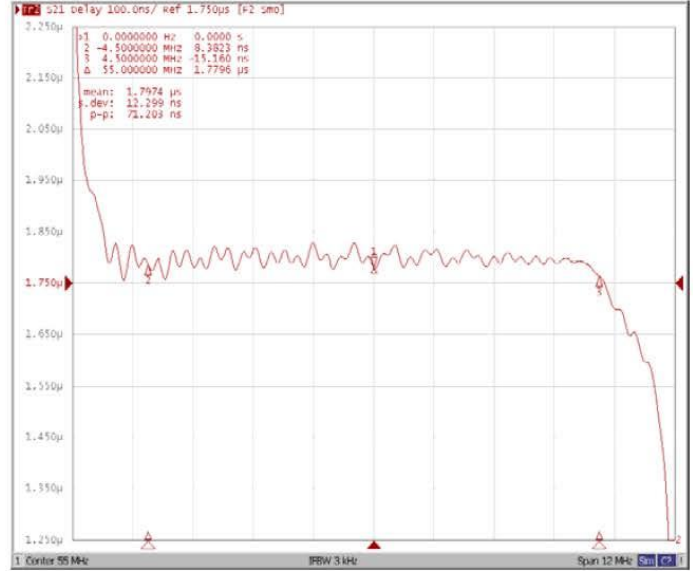


Frequency Response:

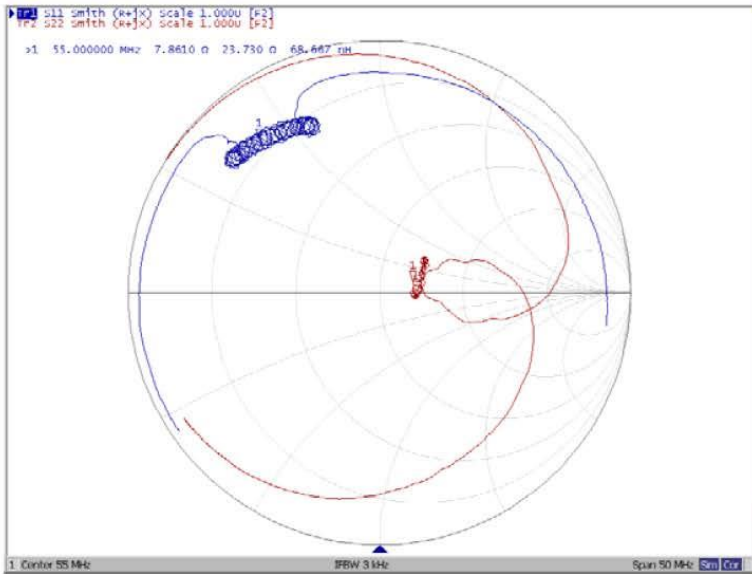
Ripple Variation Fo±4.5MHz



Group Delay Variation Fo±4.5MHz



Smith Chart



VSWR

