



ANATECH ELECTRONICS INC
RF & Microwave Filters & Products

56.25 MHz IF Saw Filter

Part Number: AM56S767

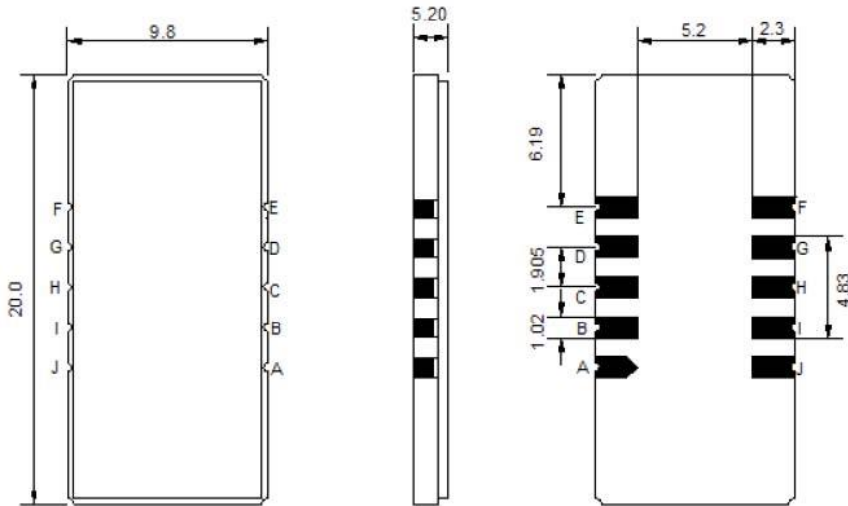


| Parameters Description | Unit | Minimum | Typical | Maximum |
|--|--------|---------|---------|---------|
| Center Frequency (Fo) | MHz | - | 56.25 | - |
| Insertion Loss at Fo | dB | - | 18.8 | 20.5 |
| Amplitude Ripple Variation at Fo ± 4.875 MHz | dBp-p | - | 0.7 | 1.0 |
| Group Delay Variation | nsec | - | 50 | 100 |
| Absolute Delay at Fo | µsec | - | 1.84 | - |
| Bandwidth at -1.0 dB | MHz | 9.8 | 9.92 | - |
| Bandwidth at -3.0 dB | MHz | 10.3 | 10.45 | - |
| Bandwidth at -40.0 dB | MHz | - | 12.55 | 12.7 |
| Bandwidth at -50.0 dB | MHz | - | 12.77 | 12.9 |
| Ultimate Rejection | dB | 50 | 55 | - |
| Temperature Coefficient | ppm/°C | - | -72 | - |

| Parameters Description | Unit | Minimum | Typical | Maximum |
|--|---------------------|---------|---------|---------|
| Operation Temperature Range | °C | -30 | - | +80 |
| Storage Temperature Range | °C | -40 | - | +85 |
| Maximum DC Voltage | V | - | - | 10 |
| Maximum Input Power | dBm | - | - | 10 |
| Source Impedance (Single Ended) ₁ | Ω | - | 50 | - |
| Load Impedance (Single Ended) ₁ | Ω | - | 50 | - |
| Package Size and Type | 20.0 x 9.8 x 1.8 mm | | D1 | |

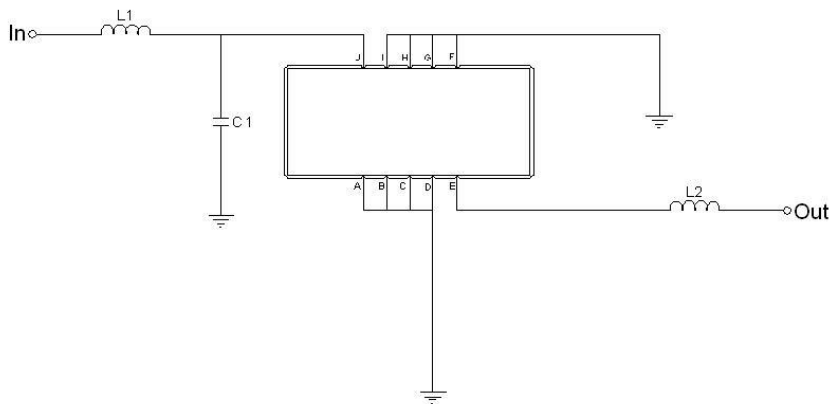


Outline Drawing:



| Pin Description | |
|-----------------|--------|
| A B C D F G H I | Ground |
| J | Input |
| E | Output |

Testing Environment:



| Test Fixture & Values | |
|-----------------------|-------------------|
| Input | L1=180nH, C1=20pF |
| Output | L2=150nH |
| Source/Load Impedance | 50 Ω |



56.25 MHz IF Saw Filter

Part Number: AM56S767



Frequency Response:

