



# 60 MHz IF Saw Filter

## Part Number: AM60S782

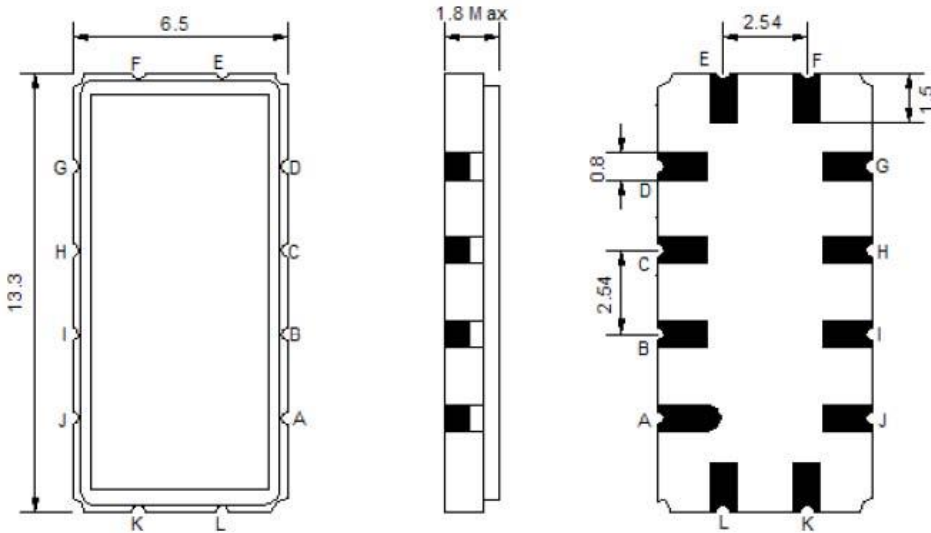


Parameters Description	Unit	Minimum	Typical	Maximum
Center Frequency (Fo)	MHz	-	60.0	-
Insertion Loss at Fo	dB	-	14.7	17.0
Group Delay Variation within Fo ± 4.60 MHz	nsec	-	40	80
Absolute Delay at Fo	µsec	-	1.66	-
Amplitude Ripple Variation within Fo ± 4.60 MHz	dBp-p	-	0.45	0.80
Bandwidth at -1.0 dB	MHz	10.0	10.20	-
Bandwidth at -3.0 dB	MHz	-	10.67	-
Bandwidth at -25.0 dB	MHz	-	12.25	-
Bandwidth at -40.0 dB	MHz	-	12.80	13.0
<b>Relative Attenuation:</b>				
Lower Sidelobe	dB	40	50	-
Upper Sidelobe	dB	40	50	-
Temperature Coefficient	ppm/°C	-	-86	-

Parameters Description	Unit	Minimum	Typical	Maximum
Operation Temperature Range	°C	-20	-	+70
Storage Temperature Range	°C	-40	-	+85
Maximum DC Voltage	V	-	-	10
Maximum Input Power	dBm	-	-	10
Source Impedance (Single Ended) <sub>1</sub>	Ω	-	50	-
Load Impedance (Single Ended) <sub>1</sub>	Ω	-	50	-
Package Size and Type	13.3 x 6.5 x 1.8 mm		V	

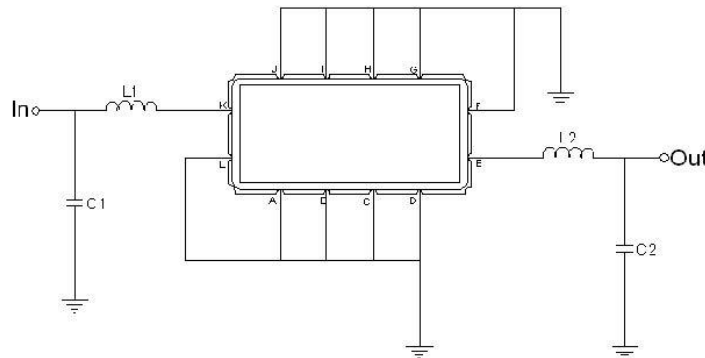


**Outline Drawing:**



Pin Description	
A B C D F G H I J L	Ground
K	Input
E	Output

**Testing Environment:**

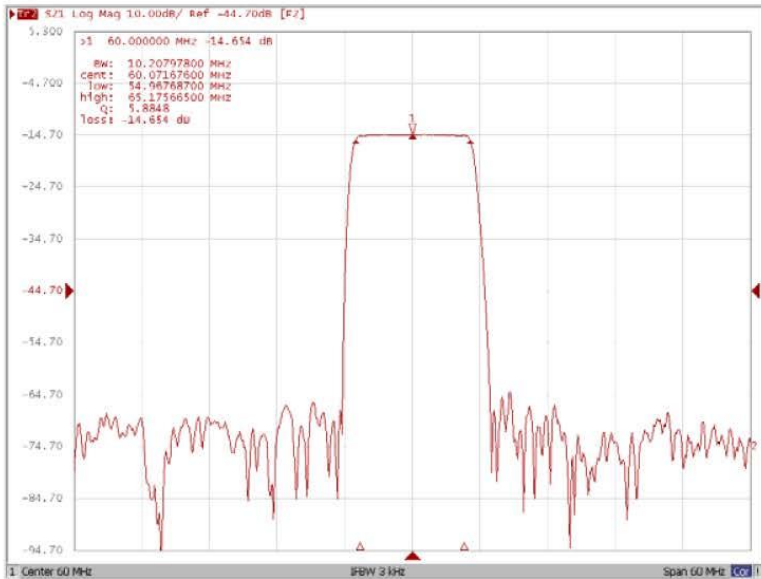


Test Fixture & Values		
<b>Input</b>	L1=120nH ,	C1=91 pF
<b>Output</b>	L2=100nH ,	C2=43 pF
<b>Source/Load Impedance</b>	50 Ω	

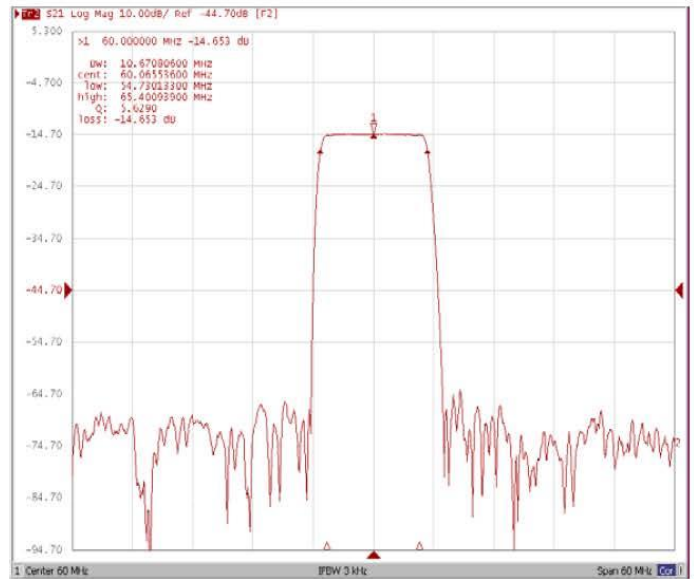


**Frequency Response:**

**Bandwidth at -1.0 dB**



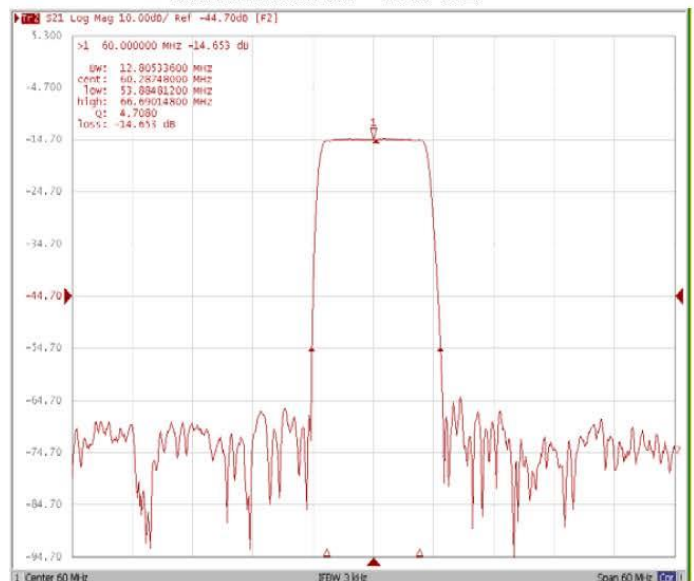
**Bandwidth at -3.0 dB**



**Bandwidth at -25.0 dB**



**Bandwidth at -40.0 dB**



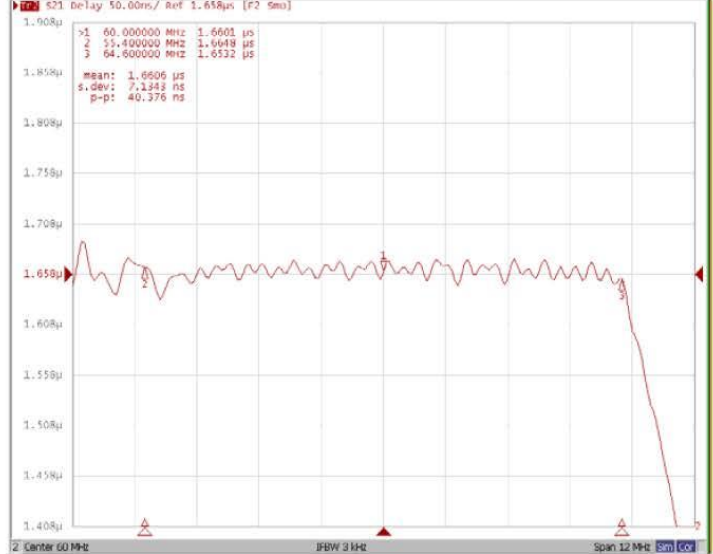


**Frequency Response:**

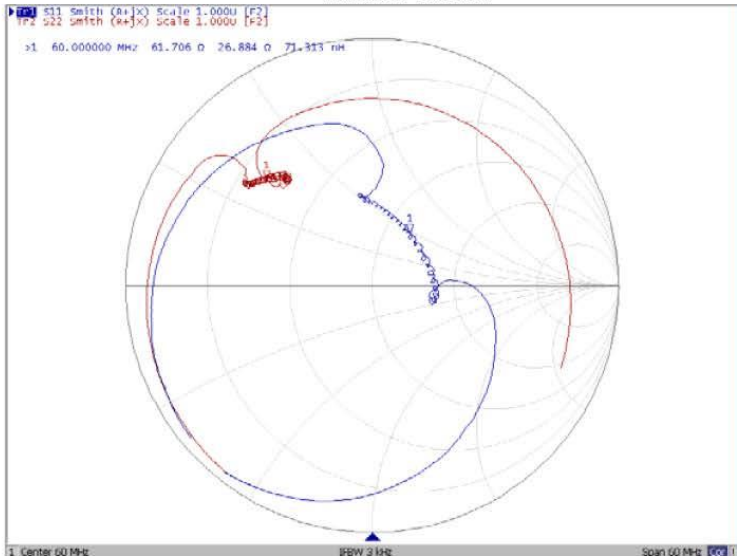
**Ripple Variation Fo±4.60MHz**



**Group Delay Variation Fo±4.60MHz**



**Smith Chart**



**VSWR**

