



60 MHz IF Saw Filter
Part Number: AM60S783

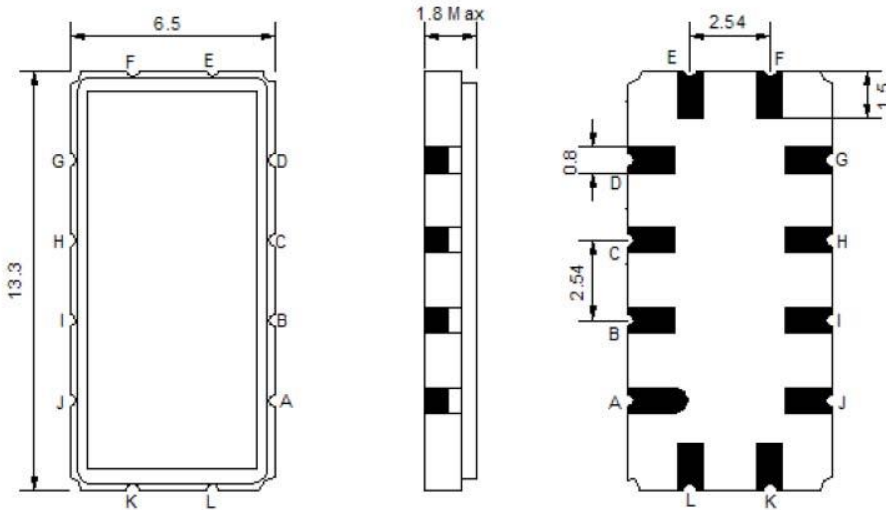


Parameters Description	Unit	Minimum	Typical	Maximum
Center Frequency (Fo)	MHz	-	60.0	-
Insertion Loss at Fo	dB	-	14.1	16.0
Group Delay Variation within Fo ± 9.22 MHz	nsec	-	30	80
Absolute Delay at Fo	µsec	-	1.34	-
Passband Ripple within Fo ± 9.22 MHz	dBp-p	-	0.55	1.0
Bandwidth at -1.0 dB	MHz	18.44	19.6	-
Bandwidth at -10.0 dB	MHz	-	21.7	22.3
Bandwidth at -20.0 dB	MHz	-	22.4	23.0
Bandwidth at -30.0 dB	MHz	-	23.1	23.6
Bandwidth at -40.0 dB	MHz	-	23.8	-
Ultimate Rejection	dB	40	45	-
Temperature Coefficient	ppm/°C	-	-86	-

Parameters Description	Unit	Minimum	Typical	Maximum
Operation Temperature Range	°C	0	-	+70
Storage Temperature Range	°C	-30	-	+80
Maximum DC Voltage	V	-	-	10
Maximum Input Power	dBm	-	-	10
Source Impedance (Single Ended) ₁	Ω	-	50	-
Load Impedance (Single Ended) ₁	Ω	-	50	-
Package Size and Type		13.3 x 6.5 x 1.8 mm		V

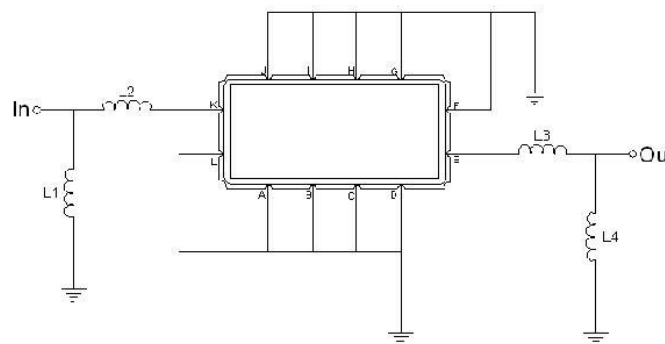


Outline Drawing:



Pin Description	
A B C D F G H I J L	Ground
K	Input
E	Output

Testing Environment:



Test Fixture & Values	
Input	L1=82 nH, L2=22 nH
Output	L3=27 nH, L4=150 nH
Source/Load Impedance	50 Ω

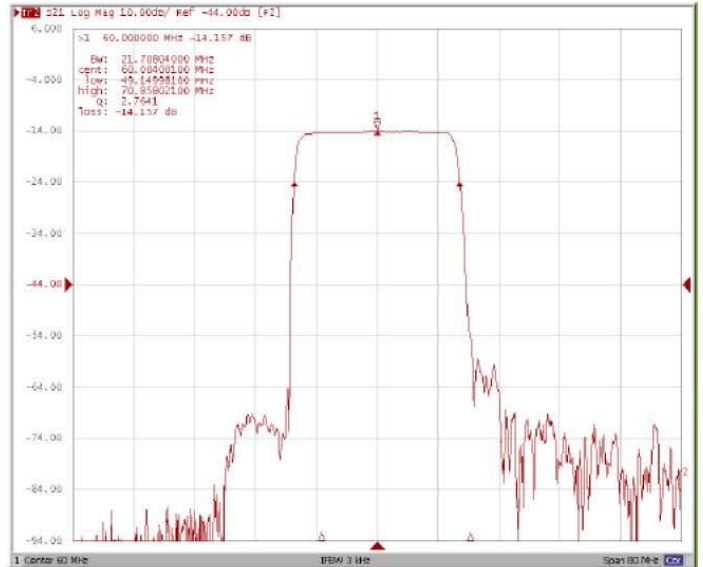


Frequency Response:

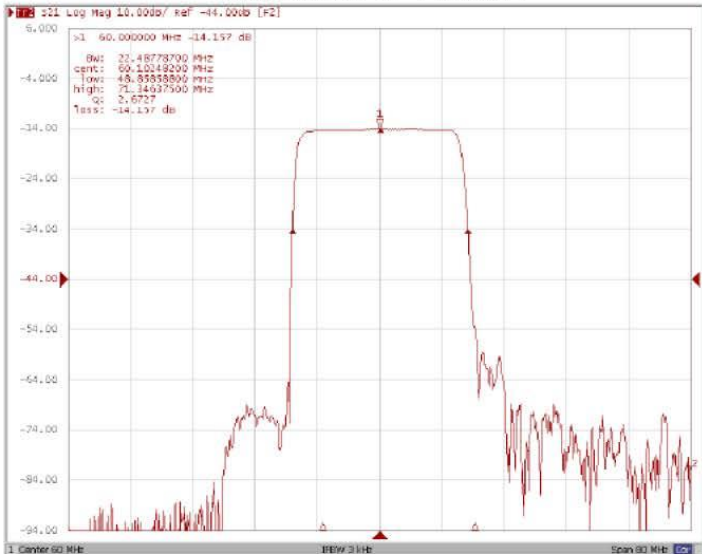
Bandwidth at -1.0 dB



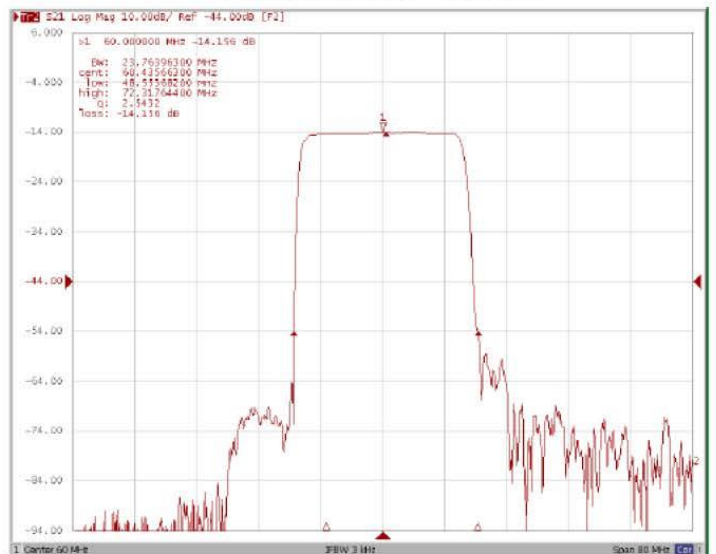
Bandwidth at -10.0 dB



Bandwidth at -20.0 dB



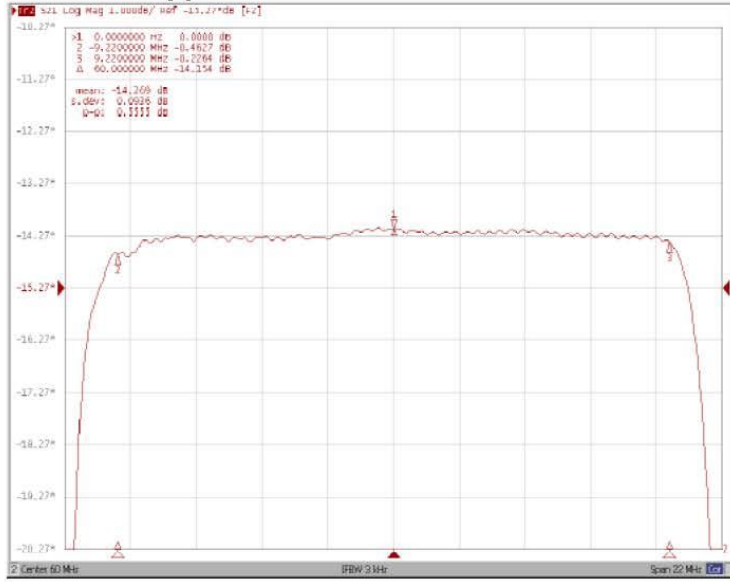
Bandwidth at -40.0 dB



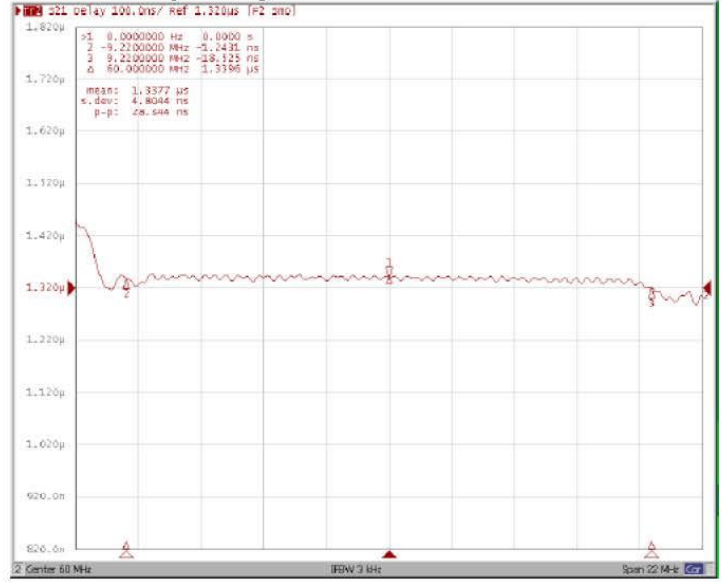


Frequency Response:

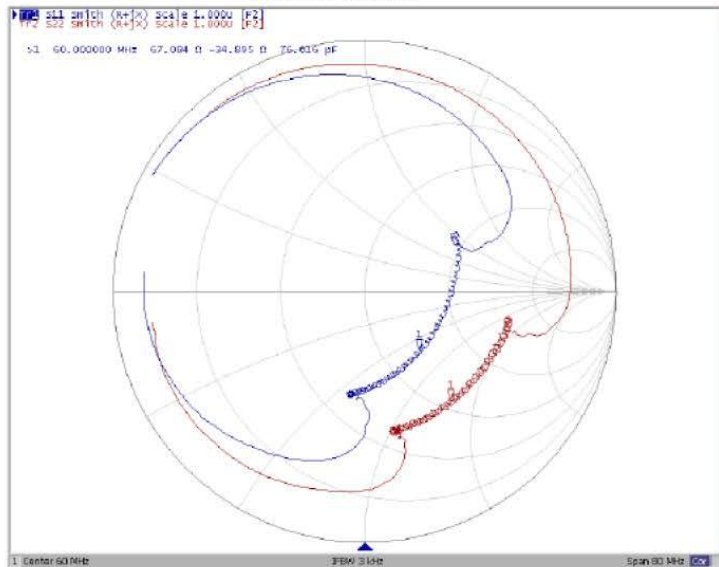
Ripple Variation Fo±9.22MHz



Group Delay Variation Fo±9.22MHz



Smith Chart



VSWR

