



# 60 MHz IF Saw Filter

## Part Number: AM60S801

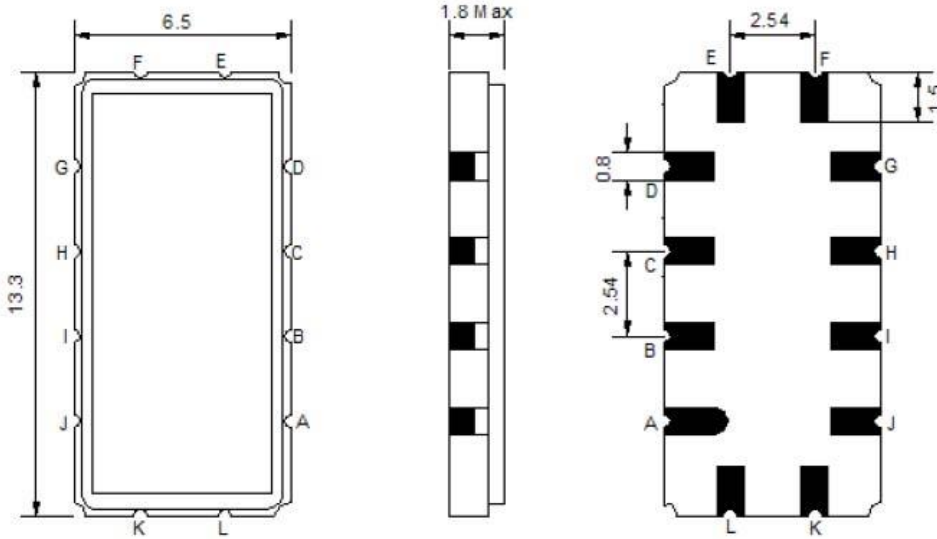


Parameters Description	Unit	Minimum	Typical	Maximum
Center Frequency (Fo)	MHz	-	60.0	-
Insertion Loss at Fo	dB	-	11.8	13.0
Group Delay Variation at Fo ± 5.0 MHz	nsec	-	38	70
Absolute Delay at Fo	µsec	-	1.1	-
Amplitude Ripple Variation at Fo ± 5.0 MHz	dBp-p	-	0.4	1.0
Bandwidth at -1.0 dB	MHz	10.0	12.0	-
Bandwidth at -3.0 dB	MHz	-	12.7	-
Bandwidth at -40.0 dB	MHz	-	15.3	17.0
<b>Relative Attenuation:</b>				
Fo ± 9.75 MHz	dB	40	45	-
Fo ± 10.0 MHz	dB	40	48	-
Fo ± 20.0 MHz	dB	45	55	-
DC ~ 45.25 MHz	dB	40	45	-
74.75 ~ 120 MHz	dB	40	45	-
VSWR (55.0 ~ 65.0 MHz)	dB	-	3.0	4.5
Temperature Coefficient	ppm/°C	-	-94	-

Parameters Description	Unit	Minimum	Typical	Maximum
Operation Temperature Range	°C	-30	-	+80
Storage Temperature Range	°C	-40	-	+85
Maximum DC Voltage	V	-	-	10
Maximum Input Power	dBm	-	-	10
Source Impedance (Single Ended) <sub>1</sub>	Ω	-	50	-
Load Impedance (Single Ended) <sub>1</sub>	Ω	-	50	-
Package Size and Type	13.3 x 6.5 x 1.8 mm		V	

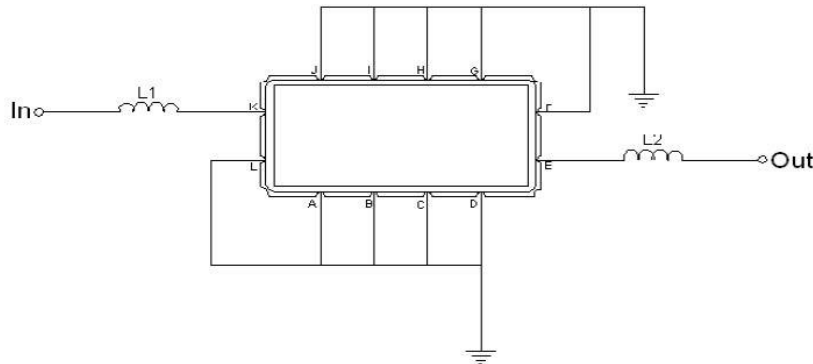


**Outline Drawing:**



Pin Description	
A B C D F G H I J L	Ground
K	Input
E	Output

**Testing Environment:**



Test Fixture & Values	
Input	L1=270 nH , Q>40
Output	L2=220 nH , Q>40
Source/Load Impedance	50 Ω



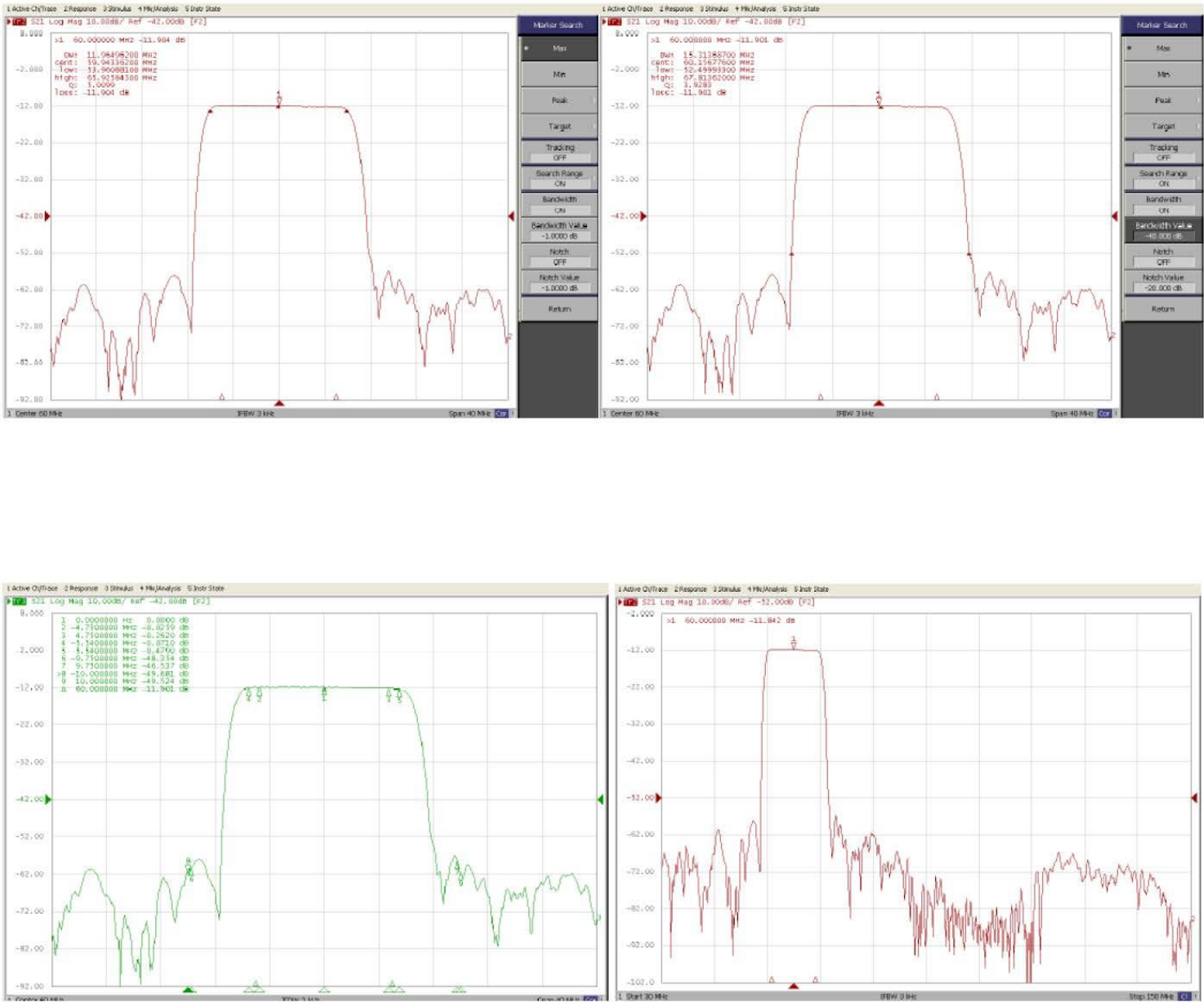
**ANATECH ELECTRONICS INC**  
RF & Microwave Filters & Products

# 60 MHz IF Saw Filter

Part Number: AM60S801



## Frequency Response:





## Frequency Response:

