



60 MHz Saw Filter

Part Number: AM60S840

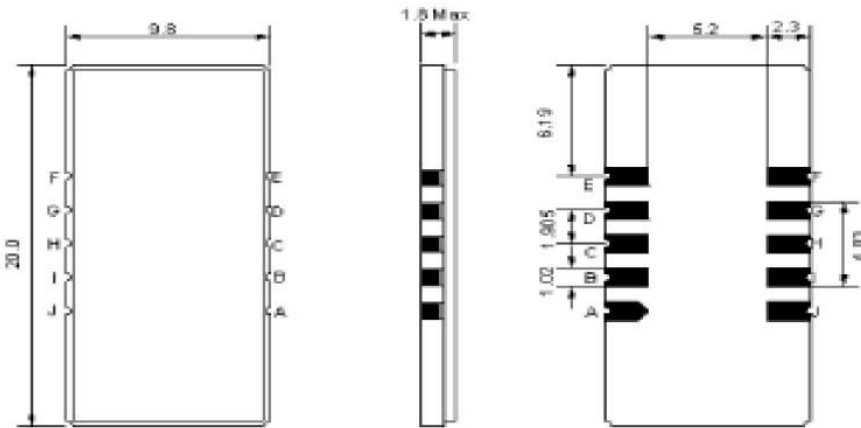


Parameters Description	Unit	Minimum	Typical	Maximum
Center Frequency (Fo)	MHz	-	60.0	-
Insertion Loss at Fo	dB	-	20.6	22.5
Passband Ripple at Fo ± 4.42 MHz	dB	-	0.4	1.00
Group Delay Variation at Fo ± 4.42 MHz	nsec	-	49	100
Absolute Delay	µsec	-	2.08	-
Bandwidth at -1.0 dB	MHz	-	10.11	-
Bandwidth at -3.0 dB	MHz	10.3	10.44	-
Bandwidth at -25.0 dB	MHz	-	11.55	11.60
Bandwidth at -40.0 dB	MHz	-	11.84	-
Ultimate Rejection	dB	50	53	-
Temperature Coefficient	ppm/°C	-	-72	-

Parameters Description	Unit	Minimum	Typical	Maximum
Operation Temperature Range	°C	-	+25	-
Storage Temperature Range	°C	-40	-	+85
Maximum DC Voltage	V	-	-	10
Maximum Input Power	dBm	-	-	10
Source Impedance (Single Ended) ₁	Ω	-	50	-
Load Impedance (Single Ended) ₁	Ω	-	50	-
Package Size and Type	20.0 x 9.8 x 1.8 mm		D1	

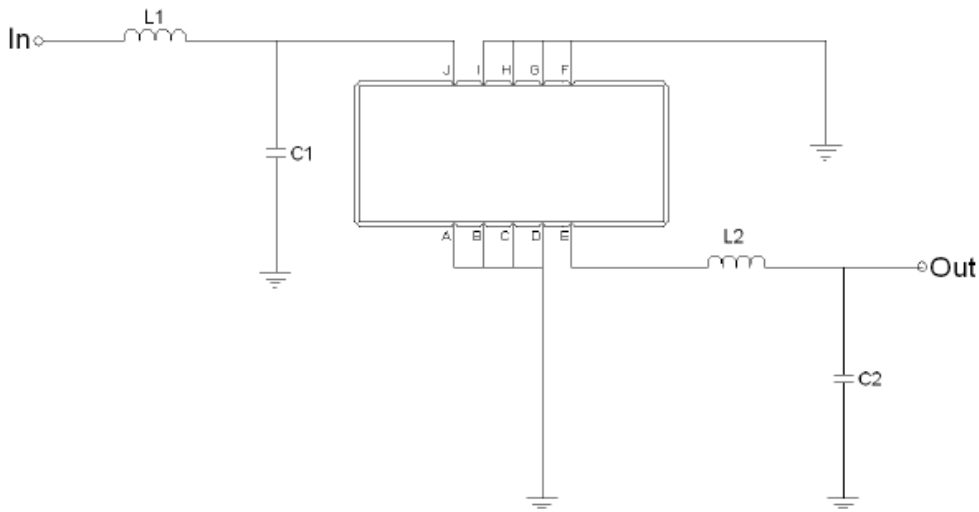


Outline Drawing:



Pin Description	
A B C D F G H I	Ground
J	Input
E	Output

Testing Environment:

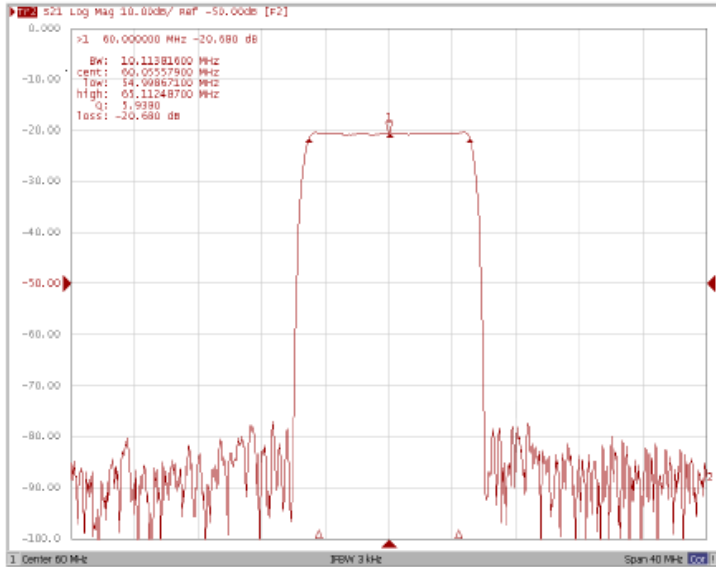


Test Fixture & Values	
Input	L1=120 nH, C1=11 pF
Output	L2=100 nH, C2=22 pF
Source/Load Impedance	50 Ω

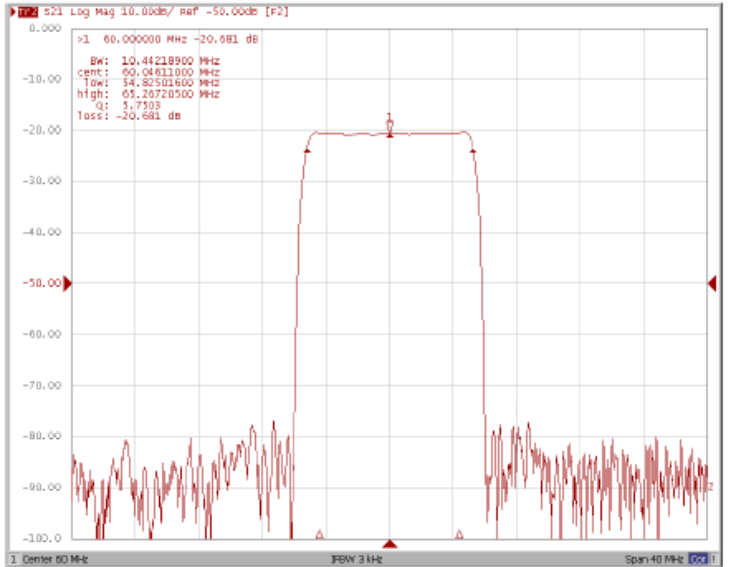


Frequency Response:

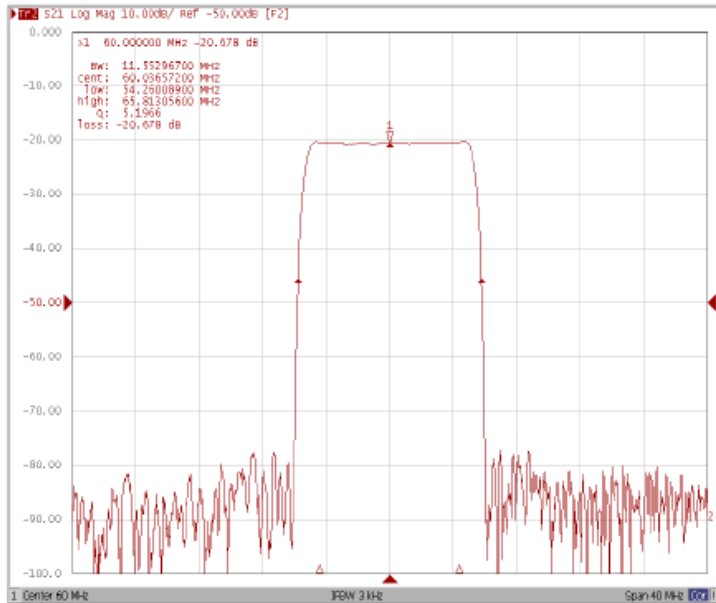
Bandwidth at -1.0 dB



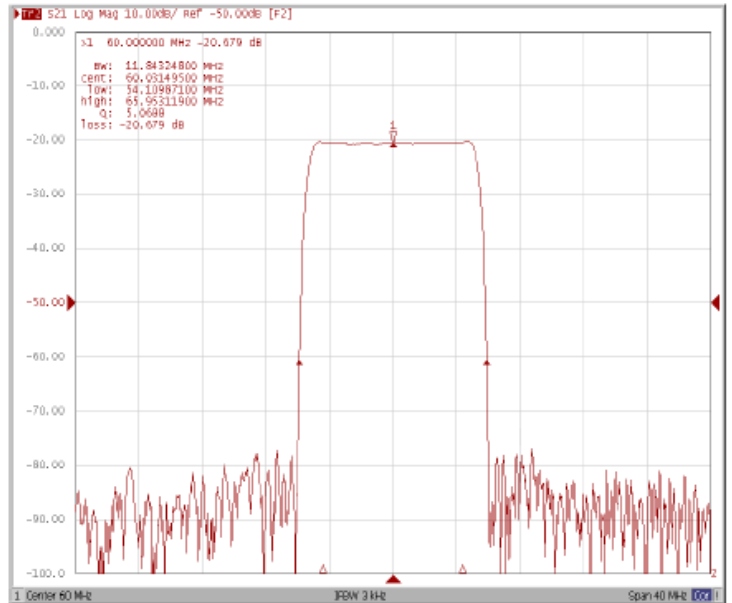
Bandwidth at -3.0 dB



Bandwidth at -25.0 dB



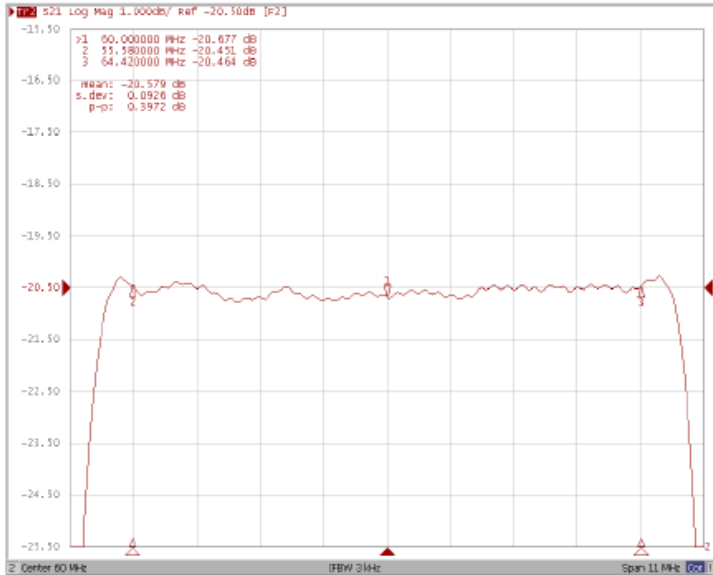
Bandwidth at -40.0 dB



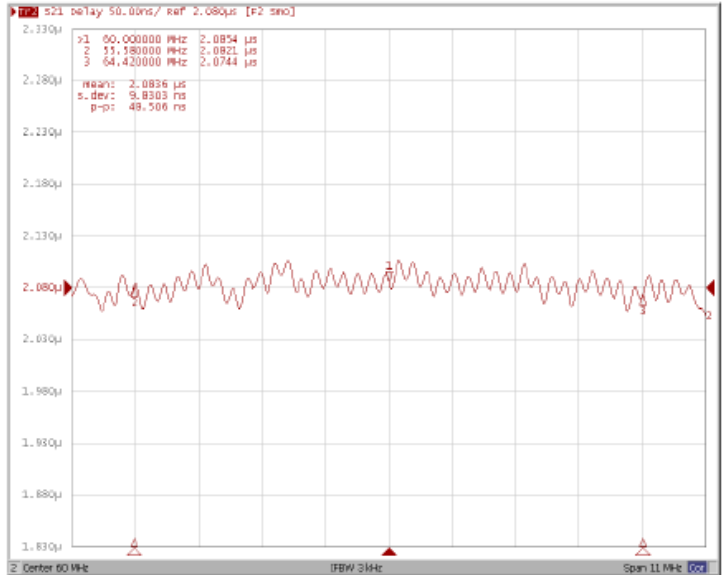


Frequency Response:

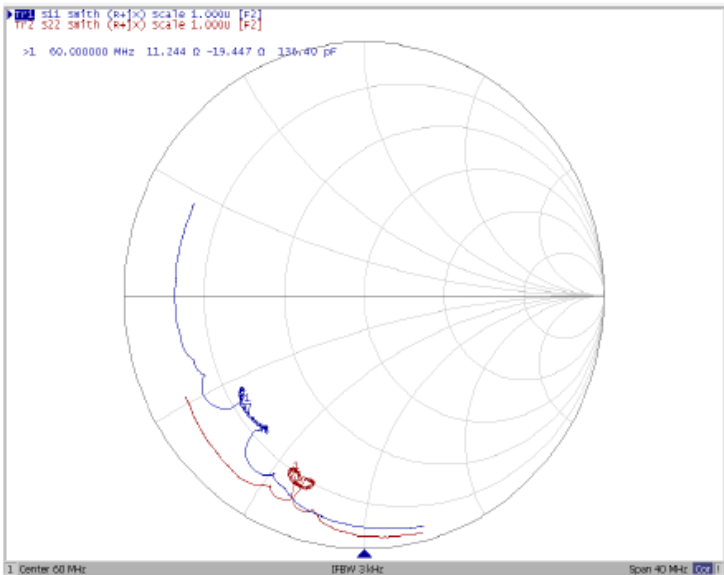
Ripple Variation Fo±4.42MHz



Group Delay Variation Fo±4.42MHz



Smith Chart



VSWR

