



62 MHz IF Saw Filter 19 MHz Bandwidth

Part Number: AM62S751

ANATECH ELECTRONICS INC
RF & Microwave Filters & Products



Parameters Description	Unit	Minimum	Typical	Maximum
Center Frequency (Fo)	MHz	-	62.5	-
Insertion Loss at Fo	dB	-	21.4	23.0
Amplitude Ripple Variation within Fo \pm 9.22 MHz	dB _{p-p}	-	0.4	1.0
Group Delay Variation within Fo \pm 9.22 MHz	nsec	-	35	70
Absolute Delay Time at Fo	μ sec	-	1.64	-
Temperature Coefficient	ppm/ $^{\circ}$ C	-	-72	-
Bandwidth at -1.0 dB	MHz	-	19.4	-
Bandwidth at -3.0 dB	MHz	19.8	19.94	-
Bandwidth at -40.0 dB	MHz	-	22.09	22.15
Relative Attenuation				
Lower Sidelobe	dB	45	50	-
Upper Sidelobe	dB	45	48	-

Parameters Description	Unit	Minimum	Typical	Maximum
Operation Temperature Range	$^{\circ}$ C	-	+25	-
Storage Temperature Range	$^{\circ}$ C	-40	-	+85
Maximum DC Voltage	V	-	-	10
Maximum Input Power	dBm	-	-	10
Source Impedance (Single Ended) ₁	Ω	-	50	-
Load Impedance (Single Ended) ₁	Ω	-	50	-
Package Size and Type	20.0 x 12.6 x 5.05 mm D			



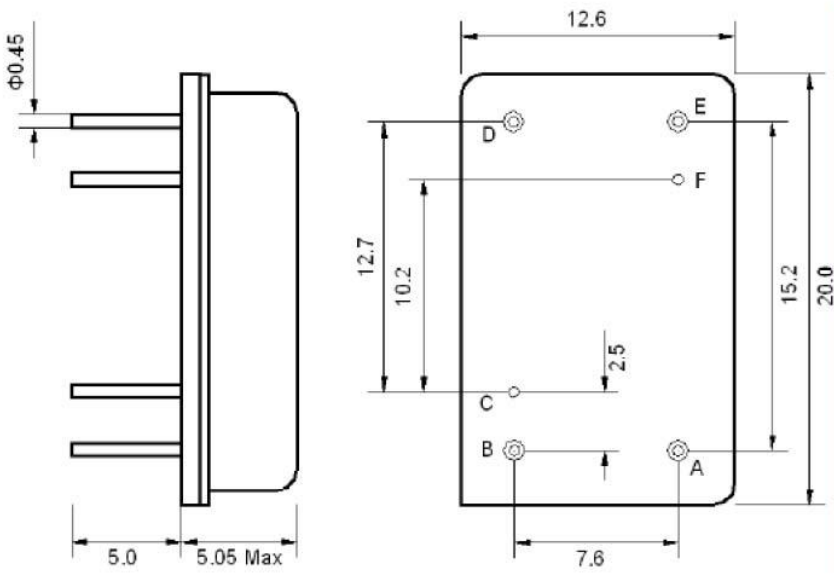
62 MHz IF Saw Filter 19 MHz Bandwidth

Part Number: AM62S751



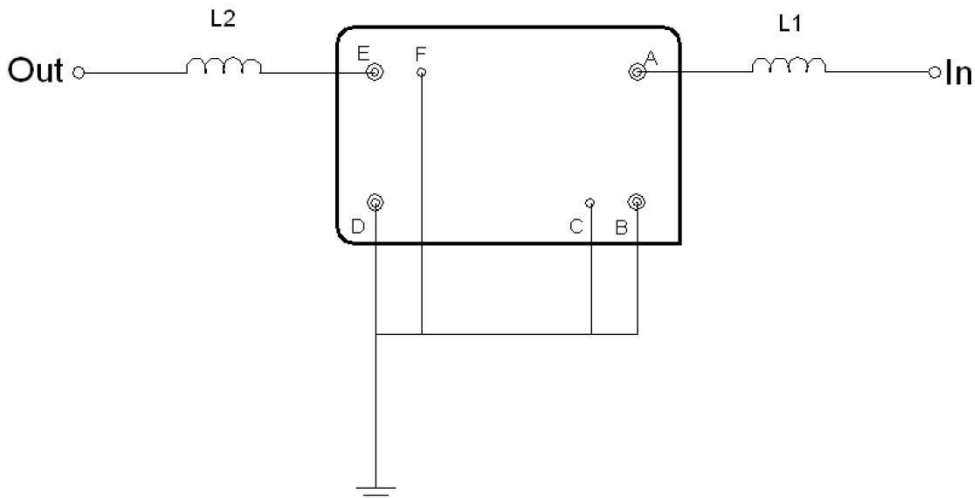
ANATECH ELECTRONICS INC
RF & Microwave Filters & Products

Outline Drawing:



Pin Description	
B C D F	Ground
A	Input
E	Output

Testing Environment:



Test Fixture & Values	
Input	L1 = 220 nH
Output	L2 = 220 nH
Source/Load Impedance	50 Ω



62 MHz IF Saw Filter 19 MHz Bandwidth

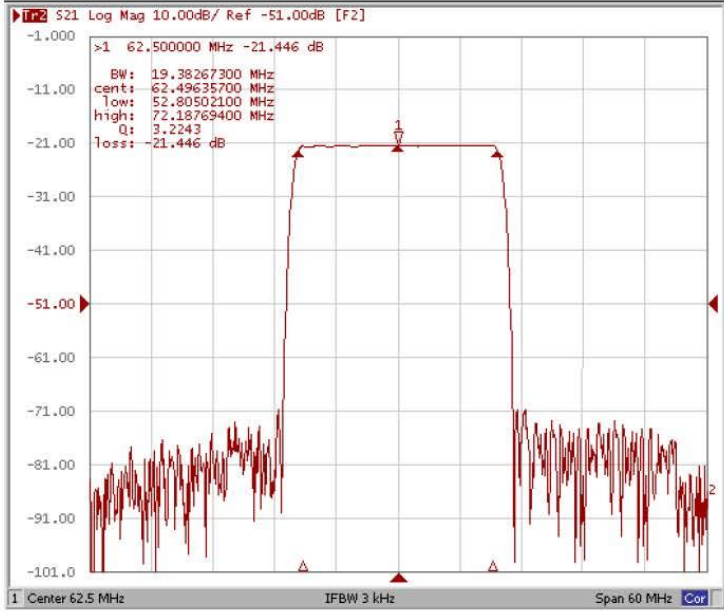
Part Number: AM62S751



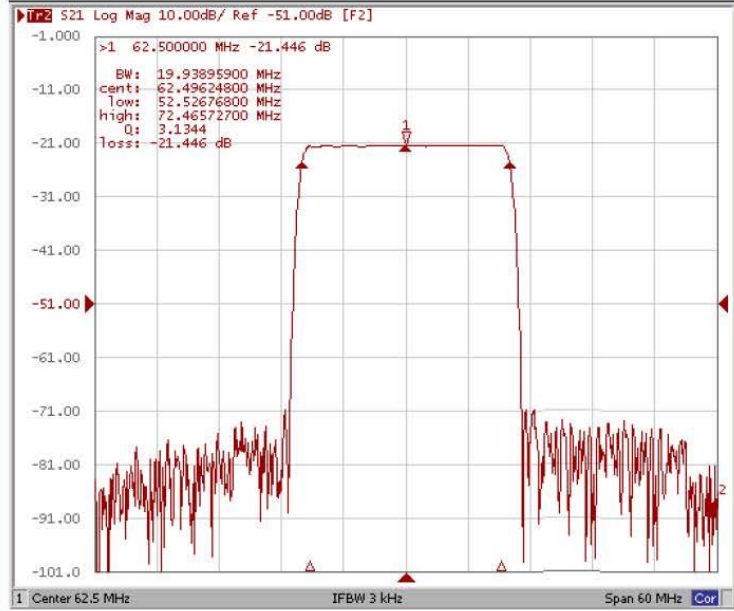
ANATECH ELECTRONICS INC
RF & Microwave Filters & Products

Frequency Response:

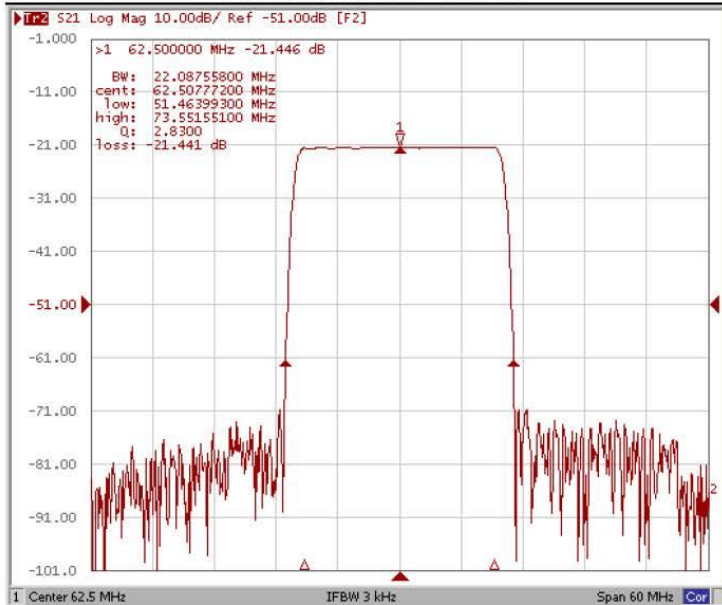
Bandwidth at -1.0 dB



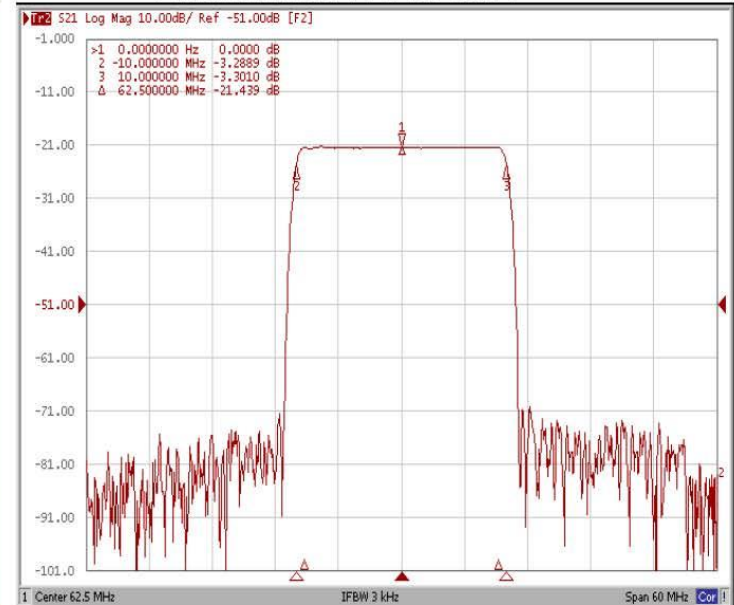
Bandwidth at -3.0 dB



Bandwidth at -40.0 dB



Attenuation Fo ±10.0 MHz





62 MHz IF Saw Filter 19 MHz Bandwidth

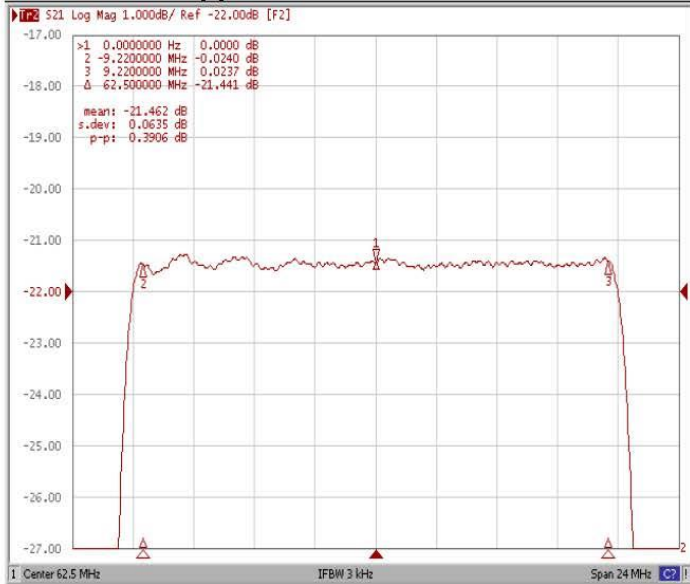
Part Number: AM62S751



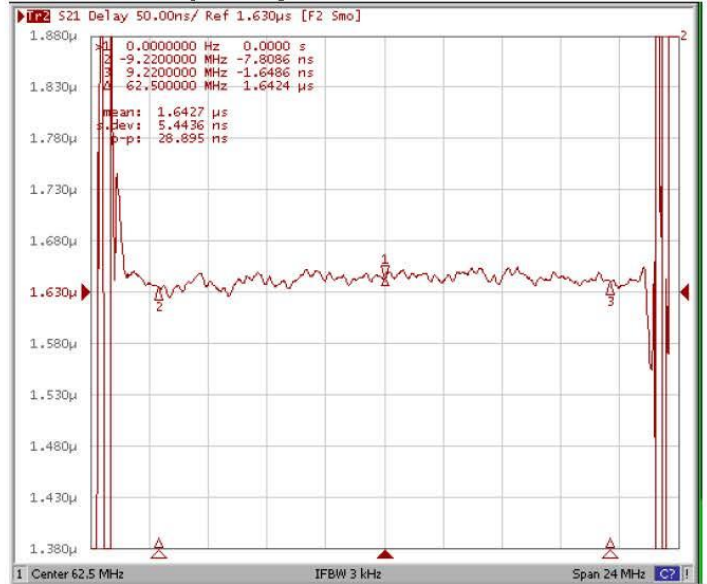
ANATECH ELECTRONICS INC
RF & Microwave Filters & Products

Frequency Response:

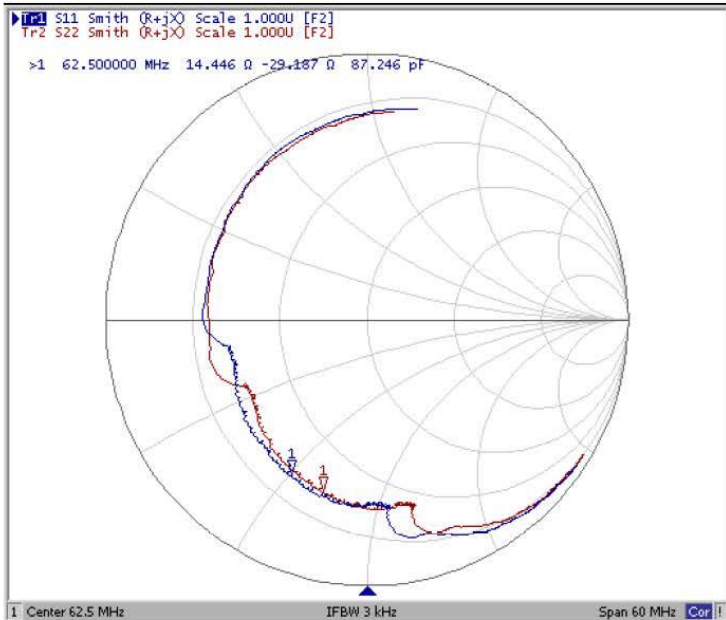
Ripple Variation Fo±9.22MHz



Group Delay Variation Fo±9.22MHz



Smith Chart



SWR

