



62 MHz IF Saw Filter 20 MHz Bandwidth

Part Number: AM62S754

ANATECH ELECTRONICS INC
RF & Microwave Filters & Products



Parameters Description	Unit	Minimum	Typical	Maximum
Center Frequency (Fo)	MHz	62.4	62.5	62.6
Insertion Loss at Fo	dB	-	23.0	25.0
Amplitude Ripple Variation within Fo ± 9.90 MHz	dB _{p-p}	-	0.50	1.0
Group Delay Variation within Fo ± 9.90 MHz	nsec	-	30	100
Absolute Delay Time at Fo	µsec	-	1.83	-
Temperature Coefficient	ppm/°C	-	-72	-
Bandwidth at -1.0 dB	MHz	20.0	20.27	-
Bandwidth at -3.0 dB	MHz	-	20.73	-
Bandwidth at -10.0 dB	MHz	-	21.46	-
Bandwidth at -40.0 dB	MHz	-	22.58	22.7
Relative Rejection:				
Lower Sidelobe	dB	48	52	-
Upper Sidelobe	dB	48	52	-

Parameters Description	Unit	Minimum	Typical	Maximum
Operation Temperature Range	°C	-	+25	-
Storage Temperature Range	°C	-40	-	+85
Maximum DC Voltage	V	-	-	10
Maximum Input Power	dBm	-	-	10
Source Impedance (Single Ended) ₁	Ω	-	50	-
Load Impedance (Single Ended) ₁	Ω	-	50	-
Package Size and Type	20.0 x 12.6 x 5.05 mm		D	



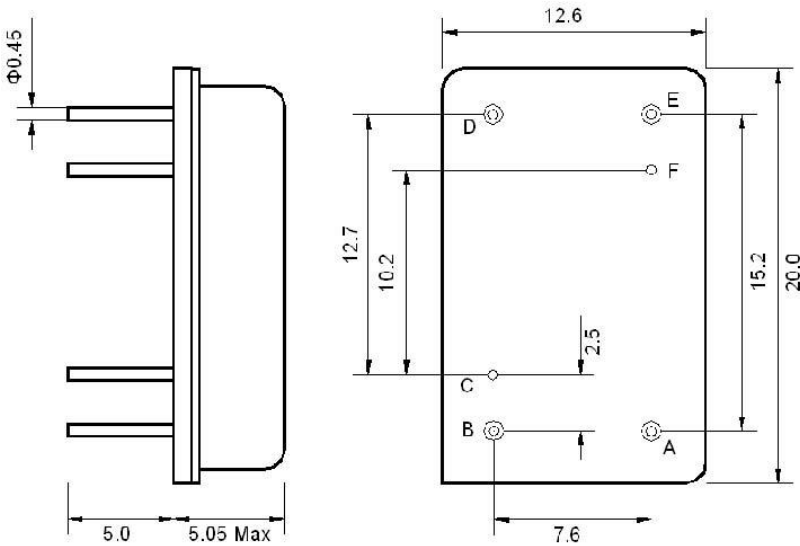
62 MHz IF Saw Filter 20 MHz Bandwidth

Part Number: AM62S754



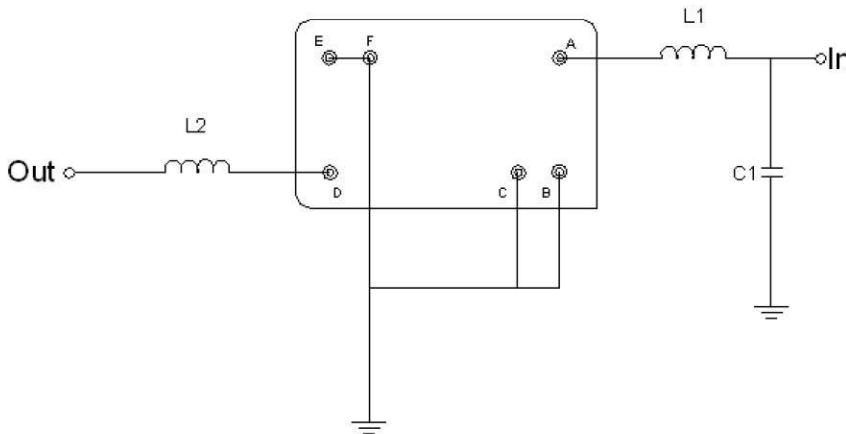
ANATECH ELECTRONICS INC
RF & Microwave Filters & Products

Outline Drawing:



Pin Description	
B C D F	Ground
A	Input
E	Output

Testing Environment:



Test Fixture & Values	
Input	L1 = 270 nH, C1 = 6 pF
Output	L2 = 220 nH
Source/Load Impedance	50 Ω



62 MHz IF Saw Filter 20 MHz Bandwidth

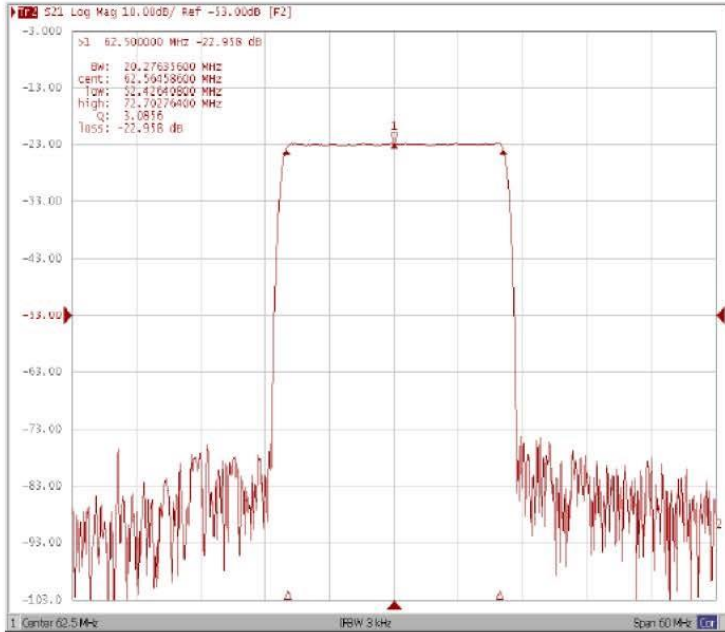
Part Number: AM62S754



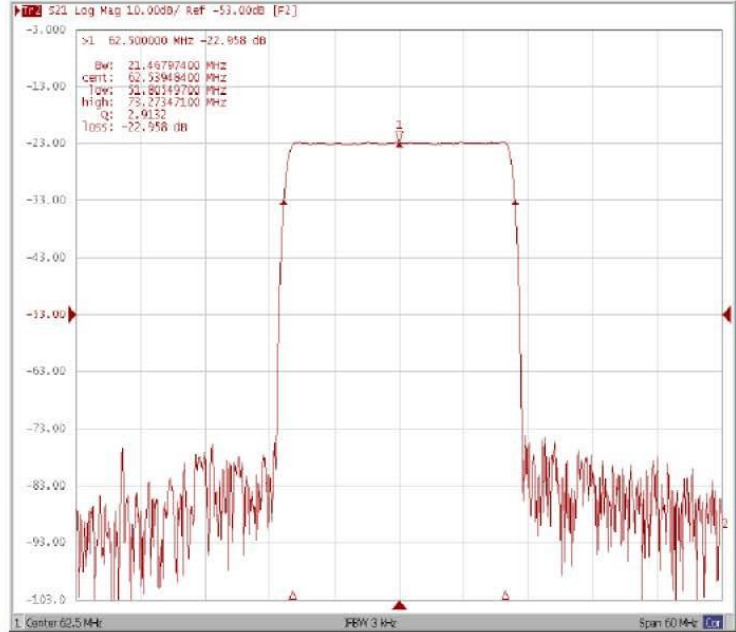
ANATECH ELECTRONICS INC
RF & Microwave Filters & Products

Frequency Response:

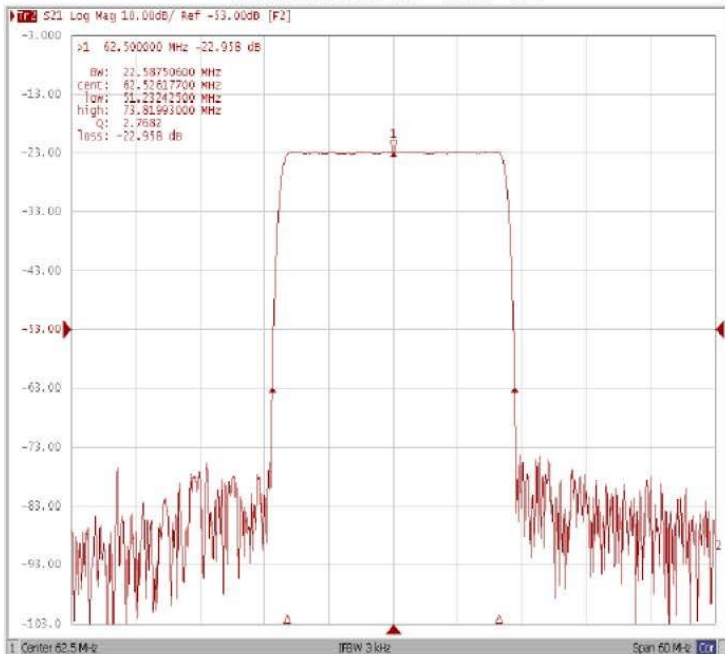
Bandwidth at -1.0 dB



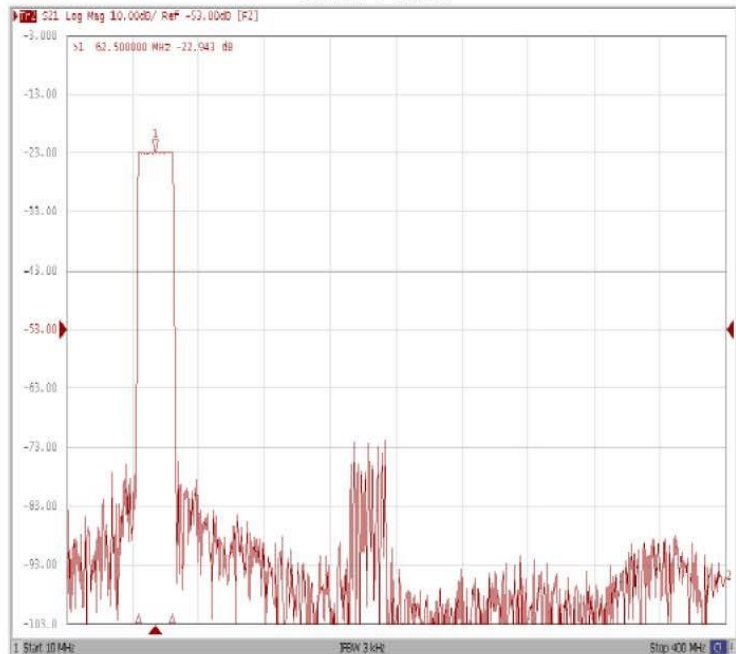
Bandwidth at -10.0 dB



Bandwidth at -40.0 dB



Wide-Band





62 MHz IF Saw Filter 20 MHz Bandwidth

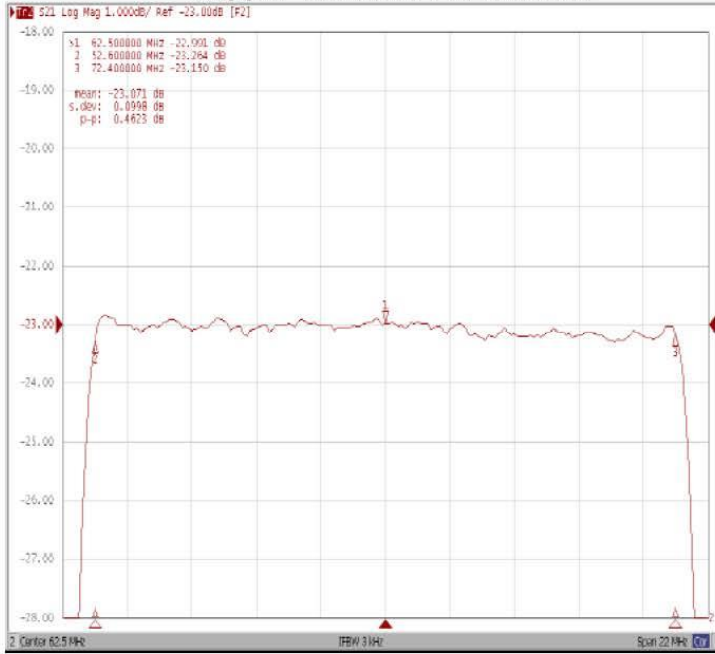
Part Number: AM62S754



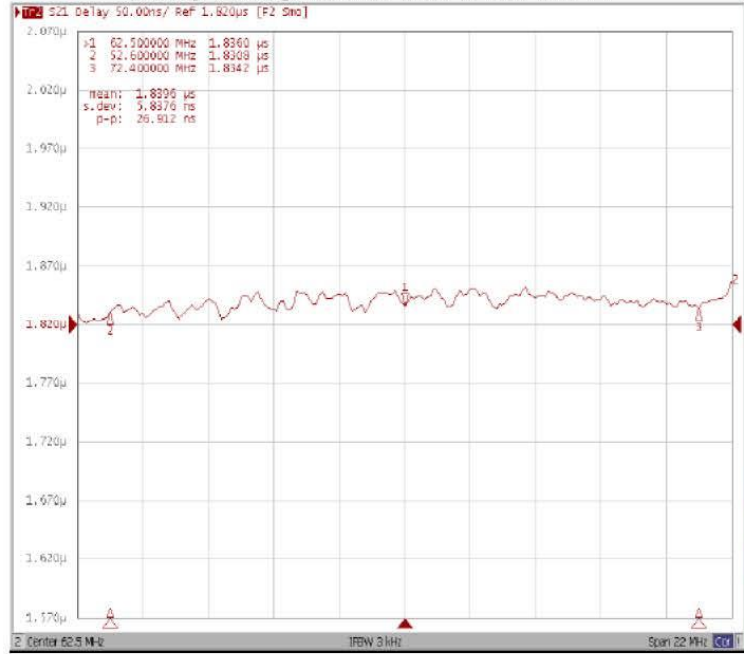
ANATECH ELECTRONICS INC
RF & Microwave Filters & Products

Frequency Response:

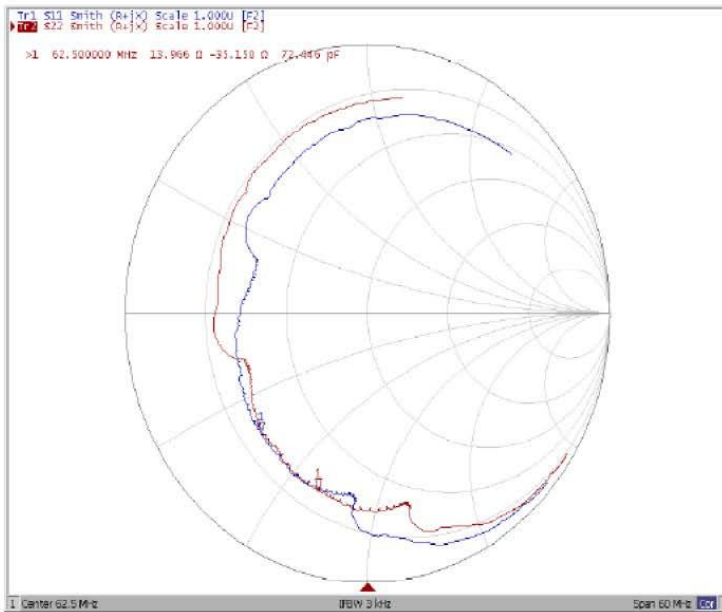
Ripple Variation Fo±9.90MHz



Group Delay Variation Fo±9.90MHz



Smith Chart



SWR

