



# 62 MHz IF Saw Filter 19 MHz Bandwidth

## Part Number: AM62S755

**ANATECH ELECTRONICS INC**  
RF & Microwave Filters & Products



Parameters Description	Unit	Minimum	Typical	Maximum
Center Frequency (Fo)	MHz	-	62.5	-
Insertion Loss at Fo	dB	-	22.5	24.0
Amplitude Ripple Variation within Fo ± 9.22 MHz	dB <sub>p-p</sub>	-	0.65	1.00
Group Delay Variation within Fo ± 9.22 MHz	nsec	-	35	80
Absolute Delay Time at Fo	µsec	-	2.33	-
Temperature Coefficient	ppm/°C	-	-72	-
Bandwidth at -1.0 dB	MHz	-	19.10	-
Bandwidth at -3.0 dB	MHz	19.20	19.50	-
Bandwidth at -50.0 dB	MHz	-	20.93	21.00
Ultimate Rejection	dB	50	53	-

Parameters Description	Unit	Minimum	Typical	Maximum
Operation Temperature Range	°C	-	+25	-
Storage Temperature Range	°C	-40	-	+85
Maximum DC Voltage	V	-	-	10
Maximum Input Power	dBm	-	-	10
Source Impedance (Single Ended) <sub>1</sub>	Ω	-	50	-
Load Impedance (Single Ended) <sub>1</sub>	Ω	-	50	-
Package Size and Type	20.0 x 12.6 x 5.05 mm D			



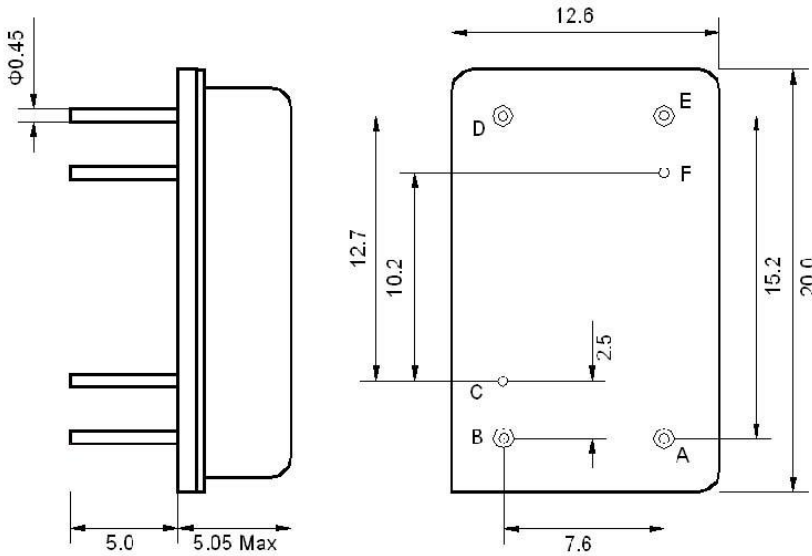
# 62 MHz IF Saw Filter 19 MHz Bandwidth

## Part Number: AM62S755



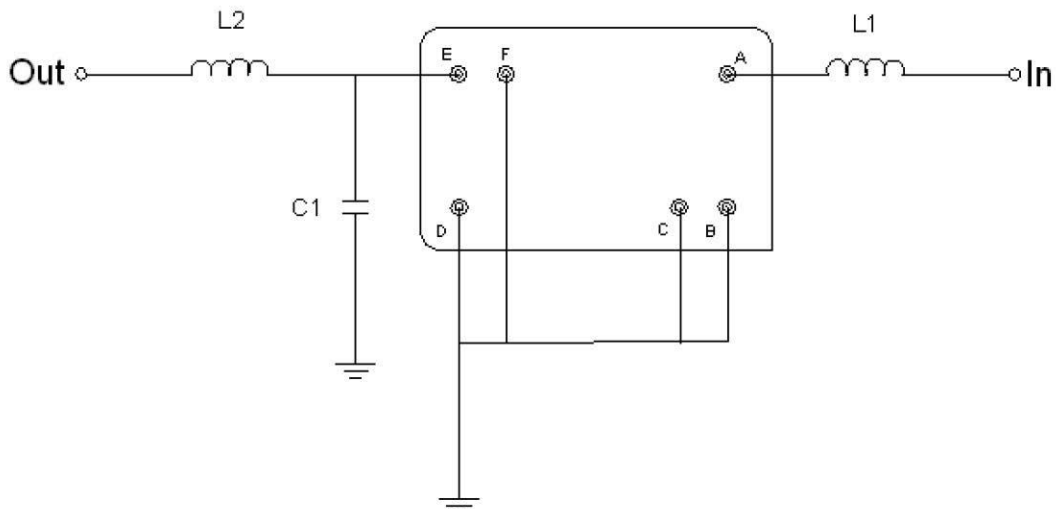
**ANATECH ELECTRONICS INC**  
RF & Microwave Filters & Products

### Outline Drawing:



Pin Description	
B C D F	Ground
A	Input
E	Output

### Testing Environment:



Test Fixture & Values	
Input	L1=220 nH
Output	L2=220 nH, C1=3.6pF
Source/Load Impedance	50 Ω



# 62 MHz IF Saw Filter 19 MHz Bandwidth

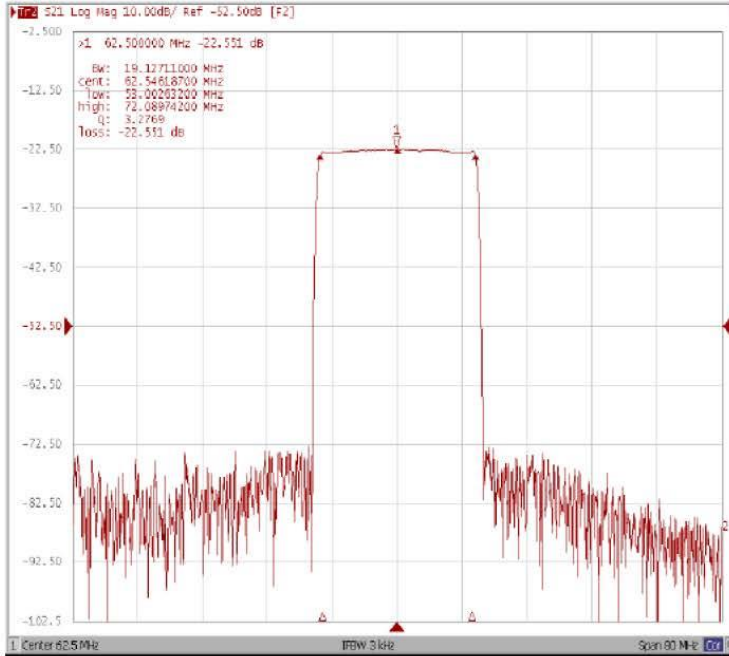
## Part Number: AM62S755



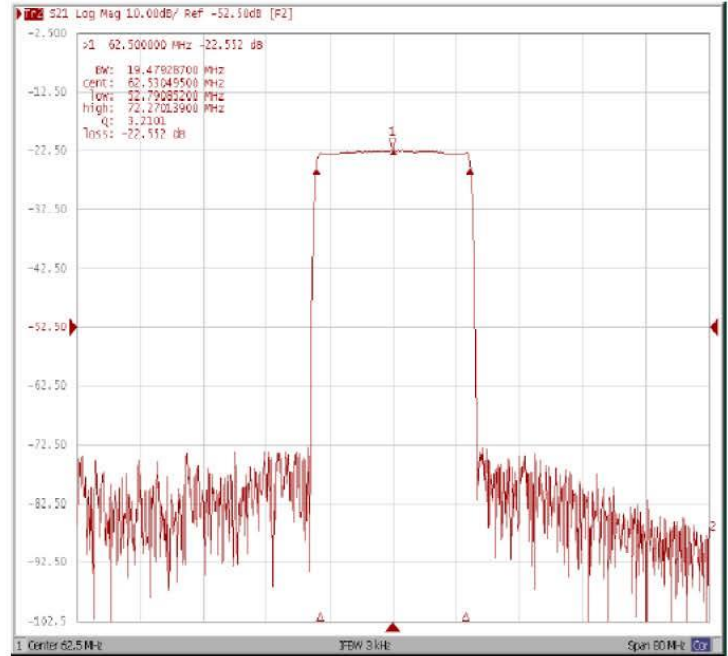
**ANATECH ELECTRONICS INC**  
RF & Microwave Filters & Products

### Frequency Response:

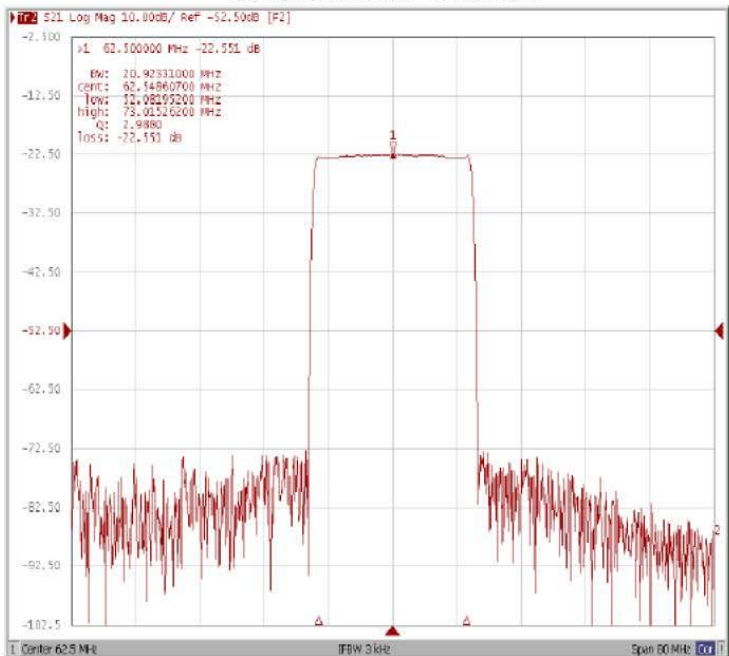
#### Bandwidth at -1.0 dB



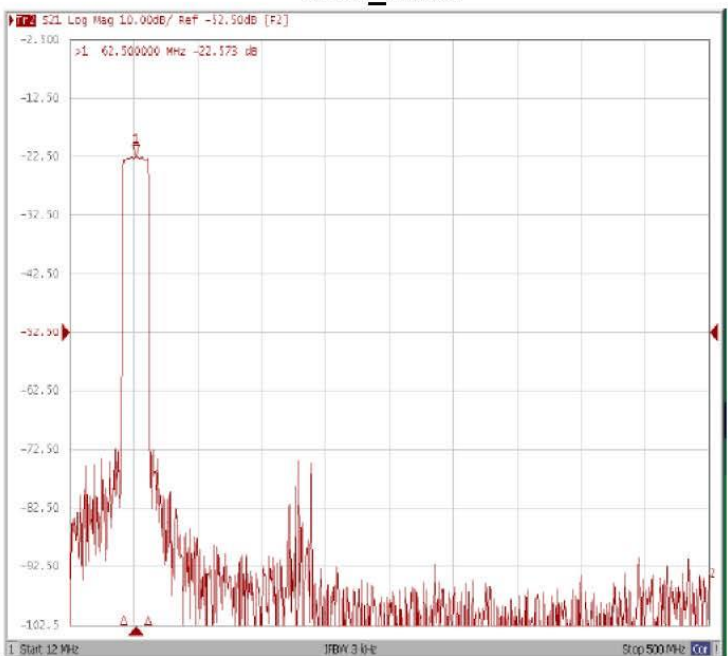
#### Bandwidth at -3.0 dB



#### Bandwidth at -50.0 dB



#### Wide\_Band





# 62 MHz IF Saw Filter 19 MHz Bandwidth

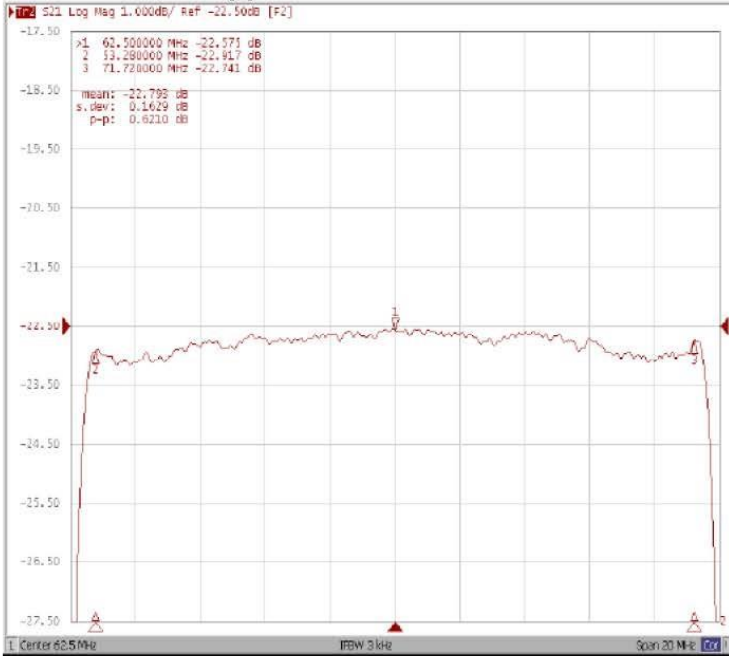
## Part Number: AM62S755



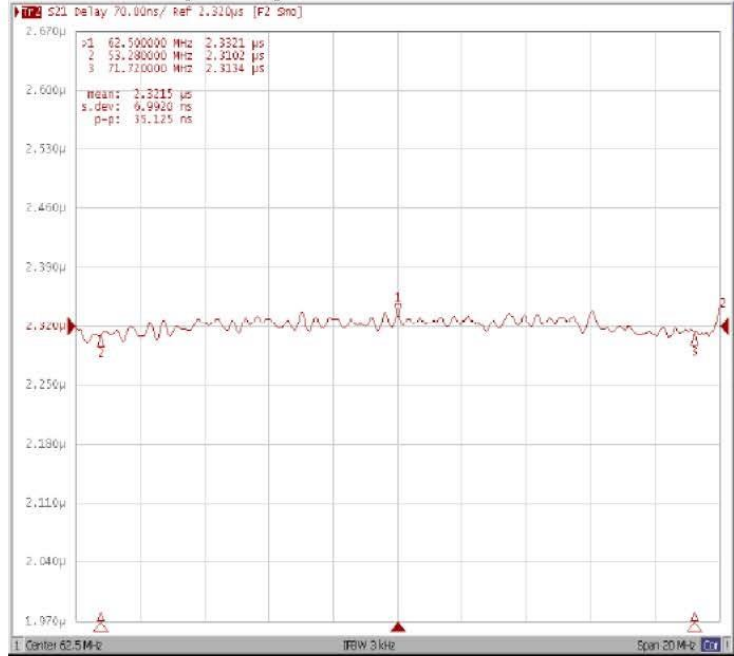
**ANATECH ELECTRONICS INC**  
RF & Microwave Filters & Products

### Frequency Response:

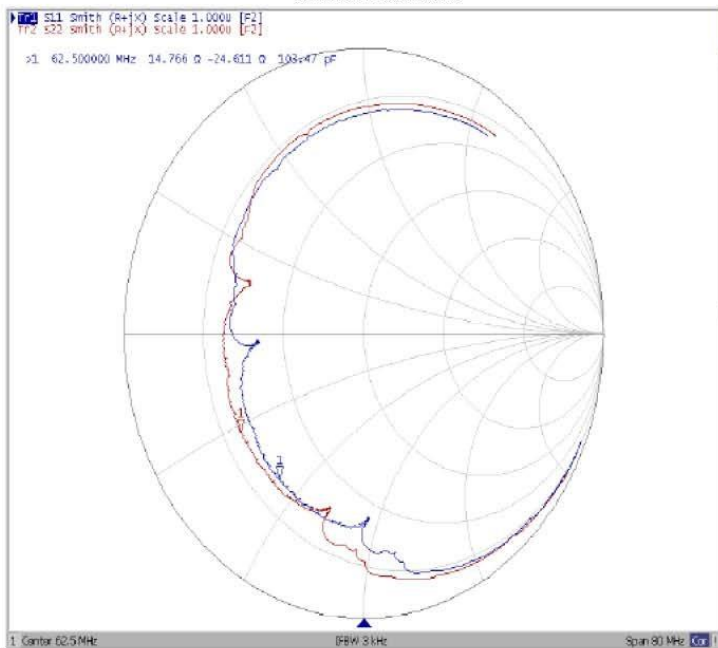
#### Ripple Variation Fo±9.22MHz



#### Group Delay Variation Fo±9.22MHz



#### Smith Chart



#### VSWR

