



62.5 MHz IF Saw Filter
Part Number: AM62S769



Parameters Description	Unit	Minimum	Typical	Maximum
Center Frequency (Fo)	MHz	-	62.50	-
Insertion Loss at Fo	dB	-	14.2	15.5
Passband Ripple Variation	dB	-	0.3	1.0
Group Delay Variation within Fo ± 9.75 MHz	nsec	-	35	50
Absolute Delay Time at Fo	µsec	-	1.12	-
Bandwidth at -1.0 dB	MHz	20	20.5	-
Bandwidth at -3.0 dB	MHz	21	21.3	-
Bandwidth at -38.0 dB	MHz	-	24.3	25.0
Ultimate Rejection	dB	40	45	-

Parameters Description	Unit	Minimum	Typical	Maximum
Operation Temperature Range	°C	-30	-	+80
Storage Temperature Range	°C	-40	-	+85
Maximum DC Voltage	V	-	-	10
Maximum Input Power	dBm	-	-	10
Source Impedance (Single Ended) ₁	Ω	-	50	-
Load Impedance (Single Ended) ₁	Ω	-	50	-
Package Size and Type	13.3 x 6.5 x 1.8 mm D			

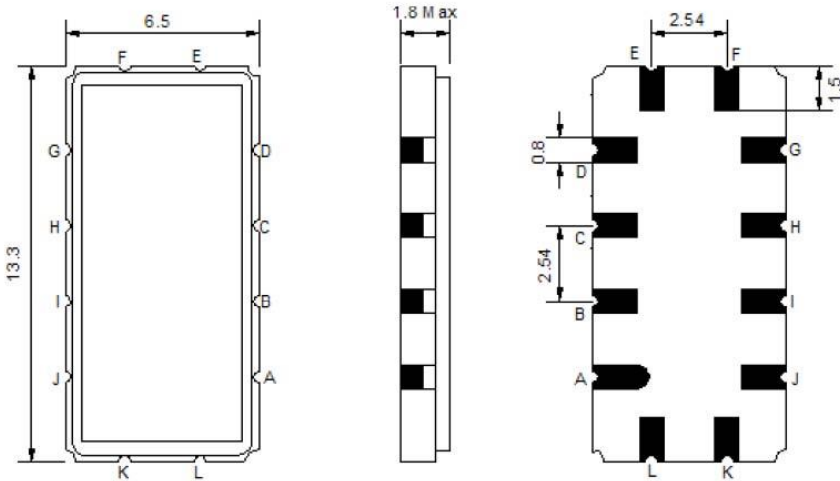


62.5 MHz IF Saw Filter

Part Number: AM62S769

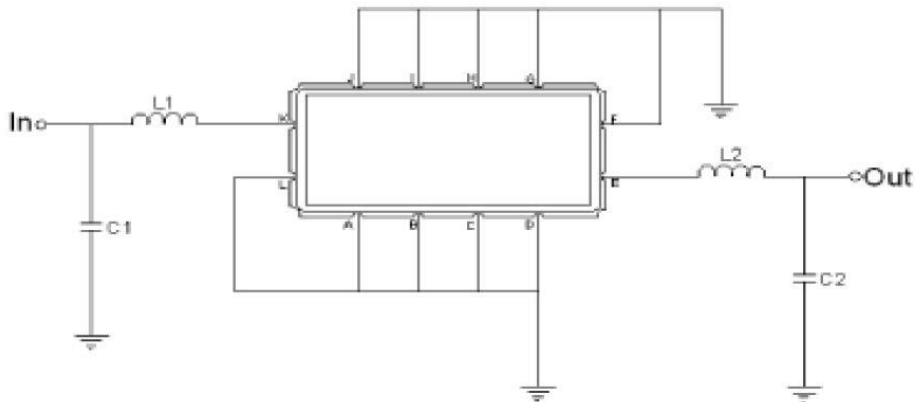


Outline Drawing:



Pin Description	
A B C D F G H I J L	Ground
K	Input
E	Output

Testing Environment:



Test Fixture & Values	
Input	L1 = 120 nH , L2 = 27 nH
Output	L3 = 100 nH
Source/Load Impedance	50 Ω



62.5 MHz IF Saw Filter

Part Number: AM62S769



Frequency Response:

