



ANATECH ELECTRONICS INC
RF & Microwave Filters & Products

62.5 MHz IF Saw Filter

Part Number: AM62S770



Parameters Description	Unit	Minimum	Typical	Maximum
Center Frequency (Fo)	MHz	62.42	62.50	62.58
Insertion Loss at Fo	dB	-	20.5	23.0
Passband Ripple Variation	dB	-	0.65	1.0
Group Delay Variation within Fo ± 9.75 MHz	nsec	-	70	120
Absolute Delay Time at Fo	µsec	-	1.1	-
Bandwidth at -1.0 dB	MHz	19.75	19.85	-
Bandwidth at -3.0 dB	MHz	20.25	20.35	-
Bandwidth at -40.0 dB	MHz	-	22.5	23.5
Ultimate Rejection	dB	40	45	-
Substrate Material	-	-	LN	-
Ambient Temperature	°C	-	25	-

Parameters Description	Unit	Minimum	Typical	Maximum
Operation Temperature Range	°C	-30	-	+80
Storage Temperature Range	°C	-40	-	+85
Maximum DC Voltage	V	-	-	10
Maximum Input Power	dBm	-	-	10
Source Impedance (Single Ended) ₁	Ω	-	50	-
Load Impedance (Single Ended) ₁	Ω	-	50	-
Package Size and Type	13.3 x 6.5 x 1.8 mm		V	

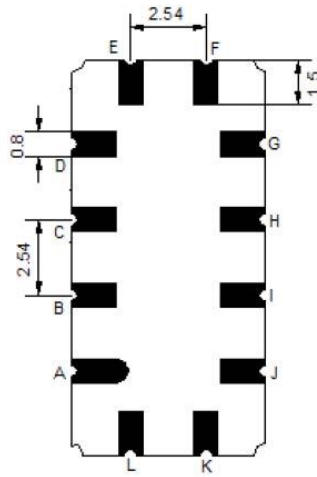
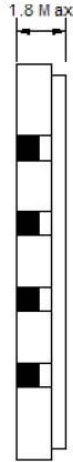
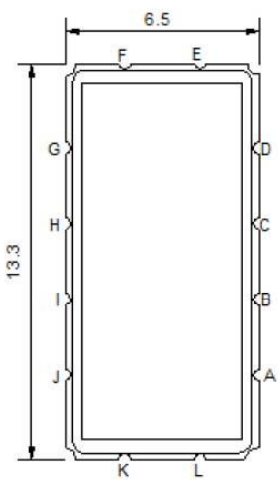


62.5 MHz IF Saw Filter

Part Number: AM62S770

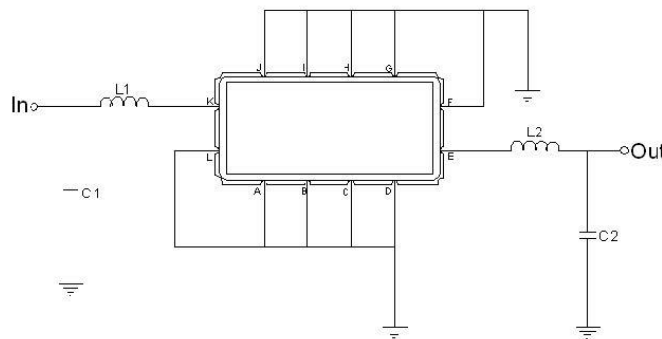


Outline Drawing:



Pin Description	
A B C D F G H I J L	Ground
K	Input
E	Output

Testing Environment:



Test Fixture & Values	
Input	L1 = 150 nH , C1 = 10 pF
Output	L2 = 470 nH , C2 = 13 pF
Source/Load Impedance	50 Ω

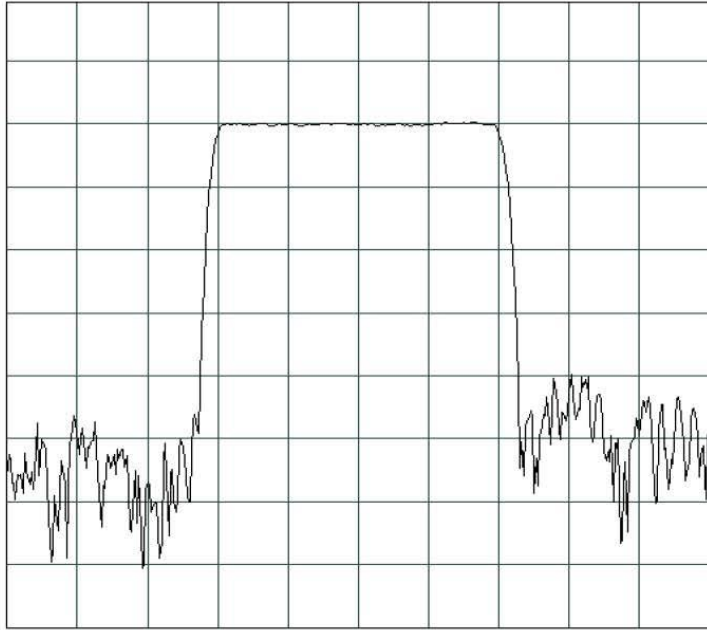


62.5 MHz IF Saw Filter

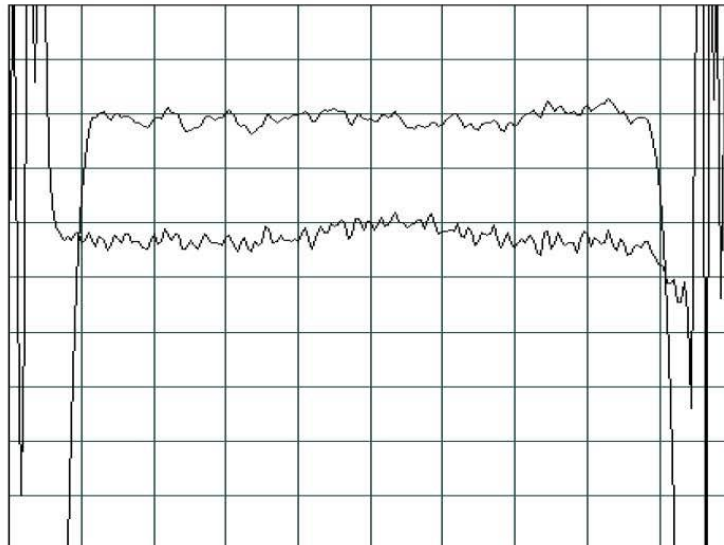
Part Number: AM62S770



Frequency Response:



Horizontal : 5.0 MHz/Div
Vertical : 10 dB/Div



Horizontal : 2.5 MHz/Div
Vertical : 1 dB/Div
Vertical : 100 ns/Div