



**ANATECH ELECTRONICS INC**  
RF & Microwave Filters & Products

## 62.5 MHz IF Saw Filter

### Part Number: AM62S785



Parameters Description	Unit	Minimum	Typical	Maximum
Center Frequency (Fo)	MHz	-	62.5	-
Insertion Loss at Fo	dB	-	9.30	11.0
Temperature Coefficient	ppm/°C	-	-86	-
Amplitude Ripple within Fo ± 2.5 MHz	dBp-p	-	0.30	0.60
Group Delay Variation within Fo ± 2.5 MHz	nsec	-	70	120
Absolute Delay Time at Fo	µsec	-	1.23	-
Bandwidth at -1.0 dB	MHz	6.0	6.47	-
Bandwidth at -3.0 dB	MHz	-	7.15	-
Bandwidth at -40.0 dB	MHz	-	10.0	10.50
<b>Relative Attenuation:</b>				
Lower Sidelobe	dB	48	52	-
Upper Sidelobe	dB	40	45	-

Parameters Description	Unit	Minimum	Typical	Maximum
Operation Temperature Range	°C	-20	-	+70
Storage Temperature Range	°C	-40	-	+85
Maximum DC Voltage	V	-	-	10
Maximum Input Power	dBm	-	-	10
Source Impedance (Single Ended) <sub>1</sub>	Ω	-	50	-
Load Impedance (Single Ended) <sub>1</sub>	Ω	-	50	-
Package Size and Type	13.3 x 6.5 x 1.8 mm		V	

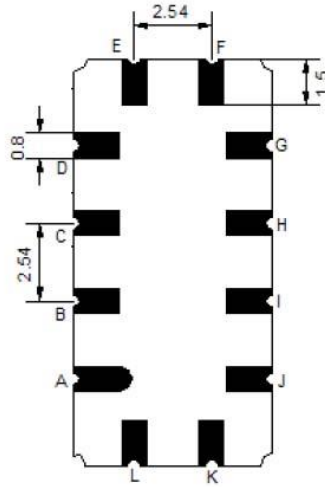
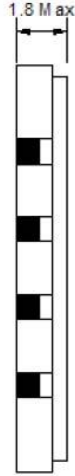
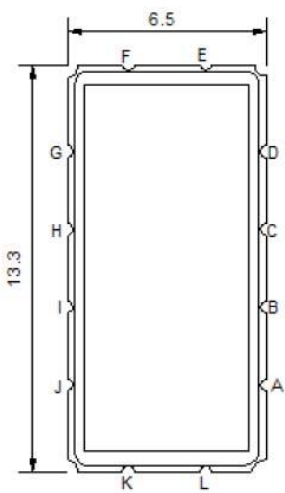


# 62.5 MHz IF Saw Filter

Part Number: AM62S785

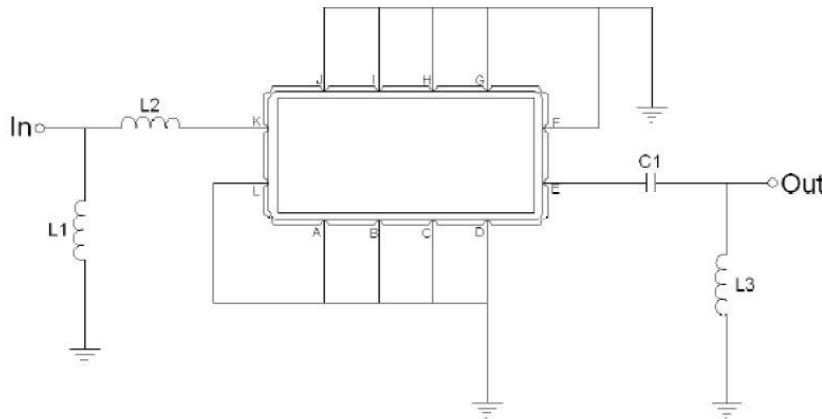


## Outline Drawing:



Pin Description	
A B C D F G H I J L	Ground
K	Input
E	Output

## Testing Environment:



Test Fixture & Values		
Input	L1=82nH ,	L2=27nH
Output	C1=330pF,	L3=180nH
Source/Load Impedance	50 Ω	

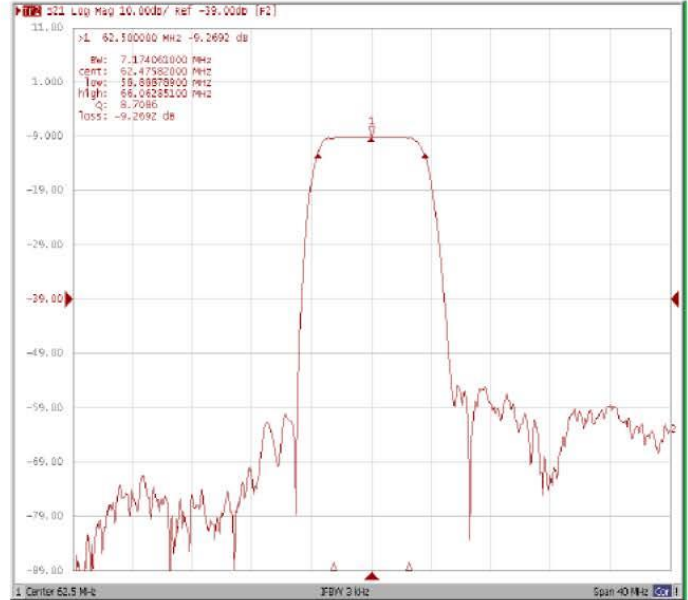


**Frequency Response:**

**Bandwidth at -1.0 dB**



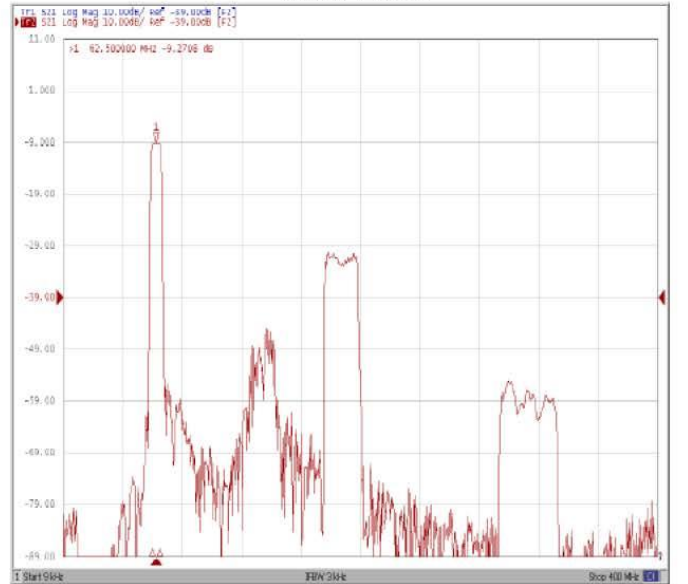
**Bandwidth at -3.0 dB**



**Bandwidth at -40.0 dB**



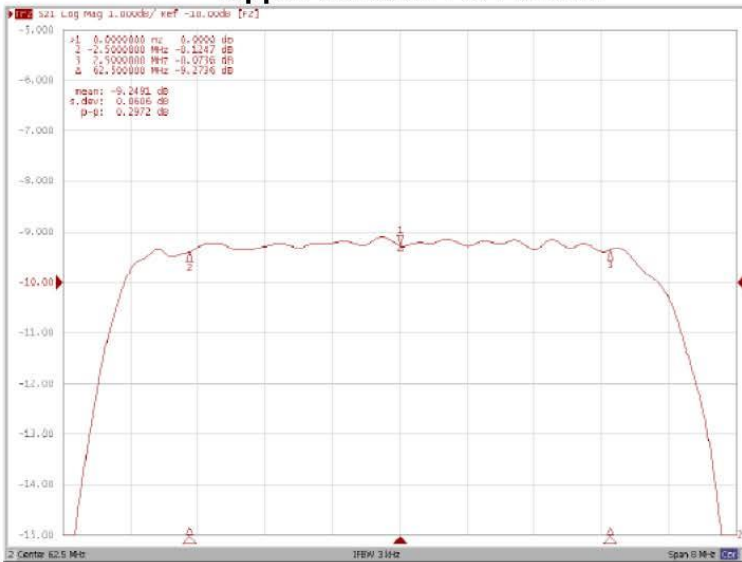
**Wide-Band**



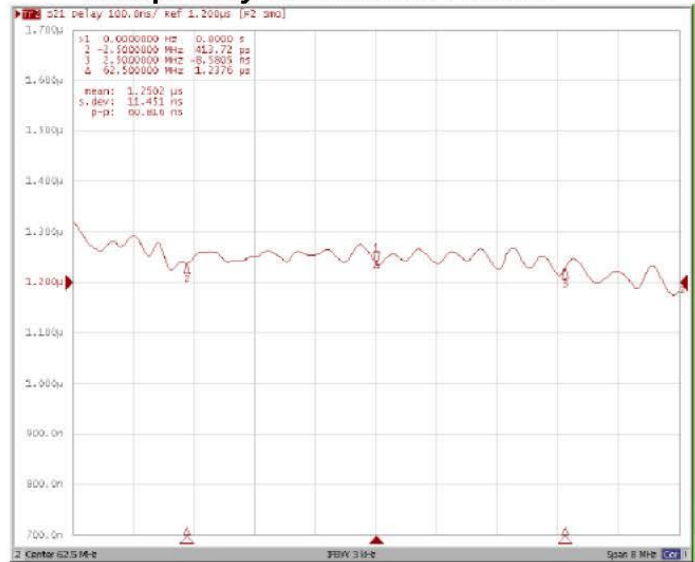


**Frequency Response:**

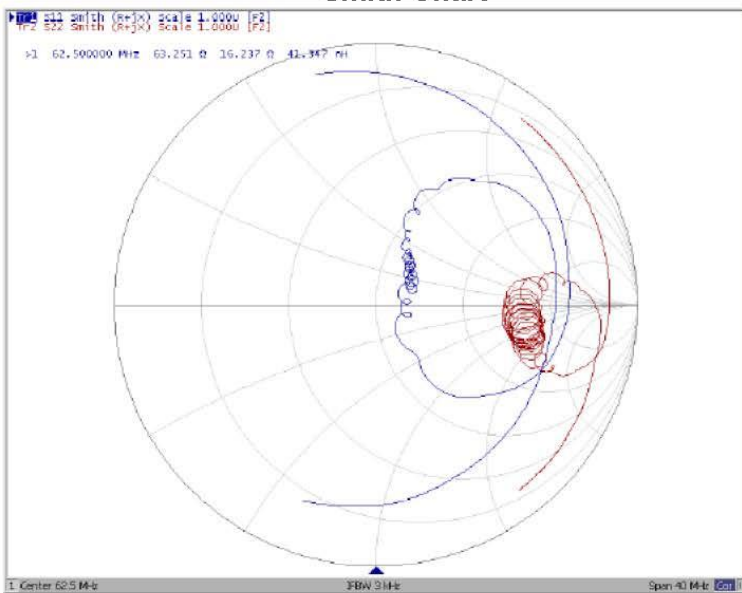
**Ripple Variation Fo±2.5MHz**



**Group Delay Variation Fo±2.5MHz**



**Smith Chart**



**SWR**

