



62.5 MHz IF Saw Filter

Part Number: AM62S786

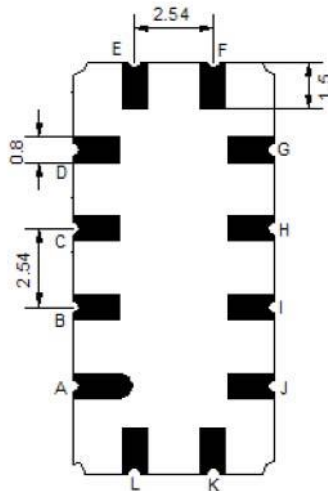
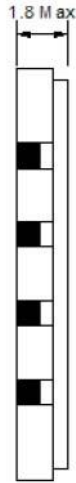
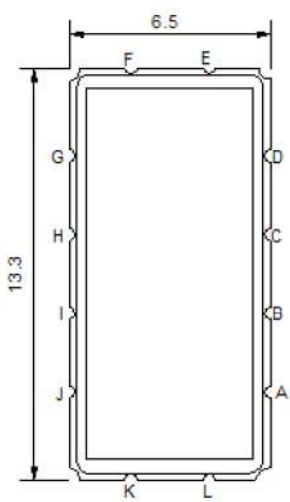


Parameters Description	Unit	Minimum	Typical	Maximum
Center Frequency (Fo)	MHz	62.42	62.5	62.58
Insertion Loss at Fo	dB	-	11.8	14.0
Temperature Coefficient	ppm/°C	-	-86	-
Passband Ripple within Fo ± 3.0 MHz	dB	-	0.40	1.0
Group Delay Variation within Fo ± 3.0 MHz	nsec	-	65	130
Absolute Delay Time at Fo	µsec	-	1.25	-
Bandwidth at -1.0 dB	MHz	6.00	6.55	-
Bandwidth at -3.0 dB	MHz	-	7.10	-
Bandwidth at -40.0 dB	MHz	-	9.34	10.0
Ultimate Rejection	dB	40	45	-

Parameters Description	Unit	Minimum	Typical	Maximum
Operation Temperature Range	°C	0	-	+60
Storage Temperature Range	°C	-30	-	+80
Maximum DC Voltage	V	-	-	10
Maximum Input Power	dBm	-	-	10
Source Impedance (Single Ended) ₁	Ω	-	50	-
Load Impedance (Single Ended) ₁	Ω	-	50	-
Package Size and Type	13.3 x 6.5 x 1.8 mm		V	

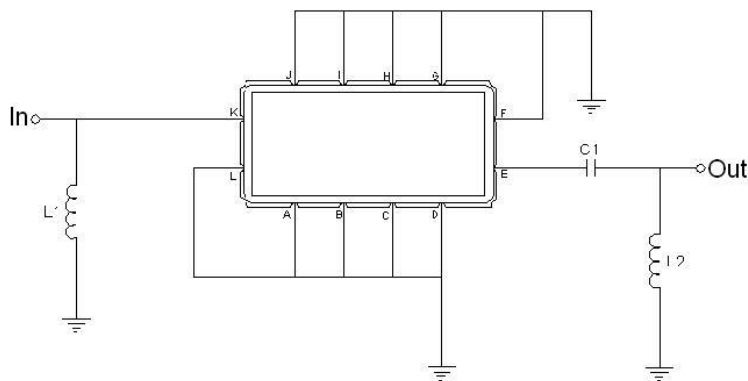


Outline Drawing:



Pin Description	
A B C D F G H I J L	Ground
K	Input
E	Output

Testing Environment:

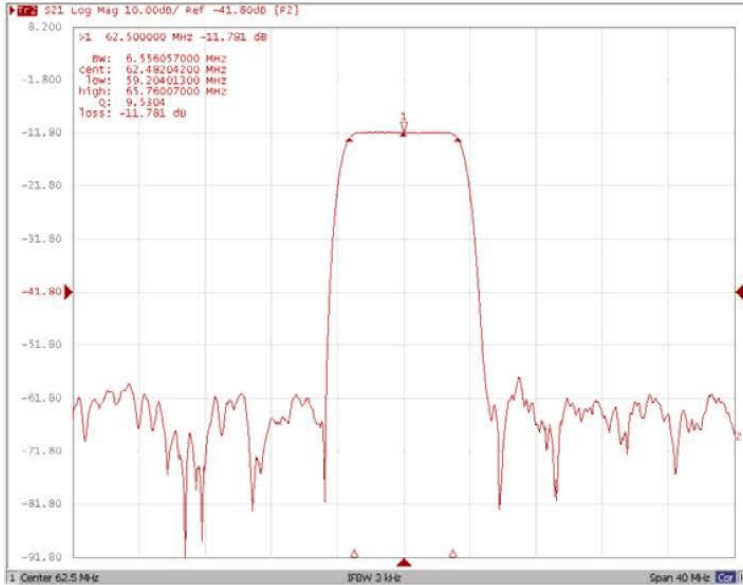


Test Fixture & Values	
Input	L1=270 nH
Output	L2=270 nH, C1=430 pF
Source/Load Impedance	50 Ω



Frequency Response:

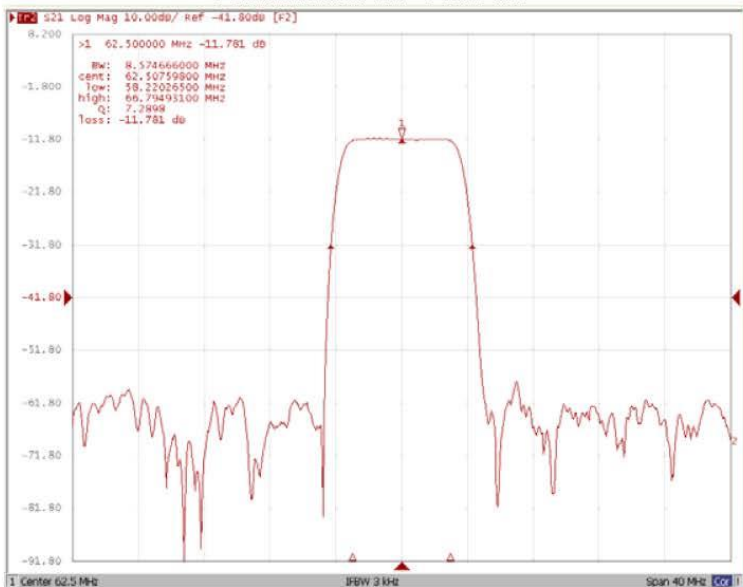
Bandwidth at -1.0 dB



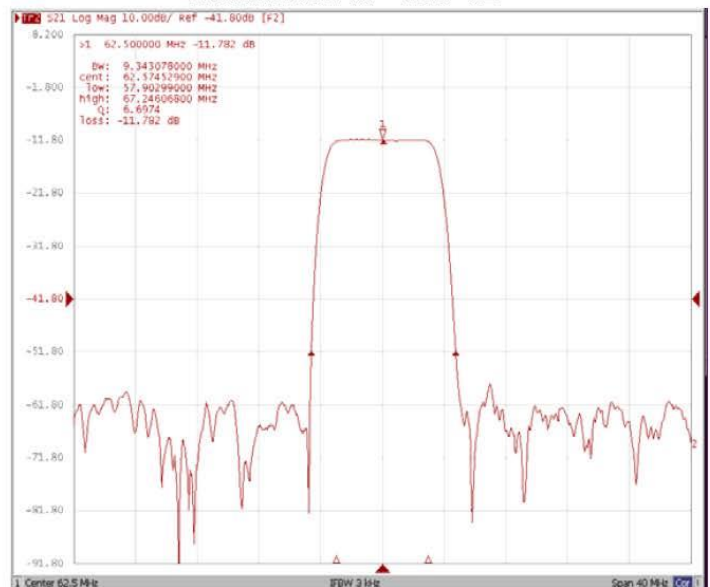
Bandwidth at -3.0 dB



Bandwidth at -20.0 dB



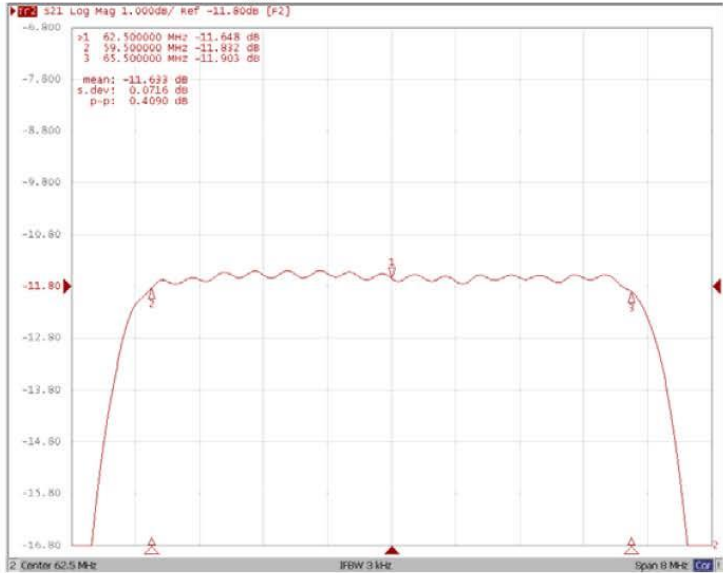
Bandwidth at -40.0 dB



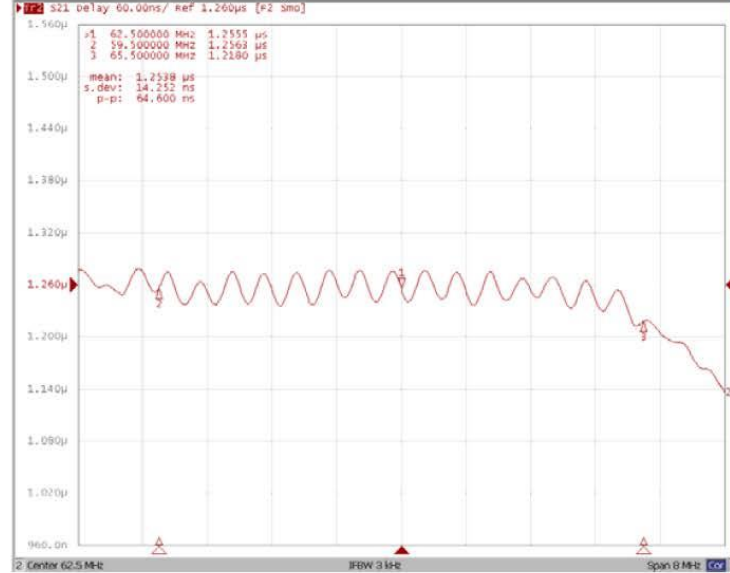


Frequency Response:

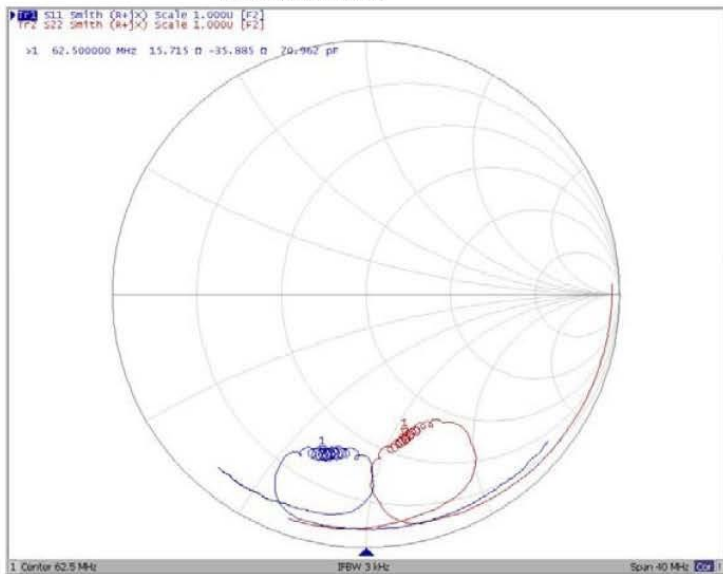
Ripple Variation Fo±3MHz



Group Delay Variation Fo±3MHz



Smith Chart



VSWR

