



62.5 MHz IF Saw Filter
Part Number: AM62S787



Parameters Description	Unit	Minimum	Typical	Maximum
Center Frequency (Fo)	MHz	-	62.5	-
Insertion Loss at Fo	dB	-	14.8	17.0
Passband Ripple within Fo ± 7.0 MHz	dB	-	0.25	0.70
Group Delay Variation within Fo ± 7.0 MHz	nsec	-	25	35
Absolute Delay at Fo	µsec	-	0.88	-
Bandwidth at -1.0 dB	MHz	16.40	16.60	-
Bandwidth at -3.0 dB	MHz	-	17.57	-
Bandwidth at -40.0 dB	MHz	-	21.60	22.0
Relative Attenuation:				
Lower Sidelobe	dB	40	45	-
Upper Sidelobe	dB	40	48	-

Parameters Description	Unit	Minimum	Typical	Maximum
Operation Temperature Range	°C	-30	-	+60
Storage Temperature Range	°C	-40	-	+85
Maximum DC Voltage	V	-	-	10
Maximum Input Power	dBm	-	-	10
Source Impedance (Single Ended) ₁	Ω	-	50	-
Load Impedance (Single Ended) ₁	Ω	-	50	-
Package Size and Type	9.1 x 4.8 x 1.5 mm T			

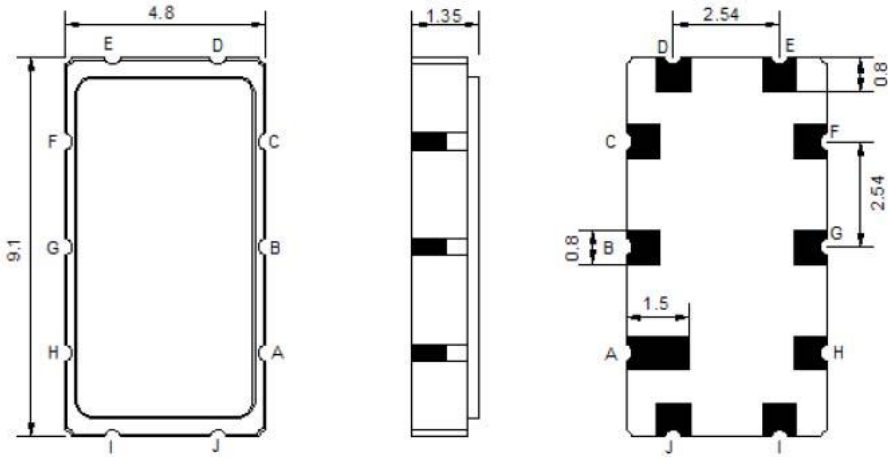


62.5 MHz IF Saw Filter

Part Number: AM62S787

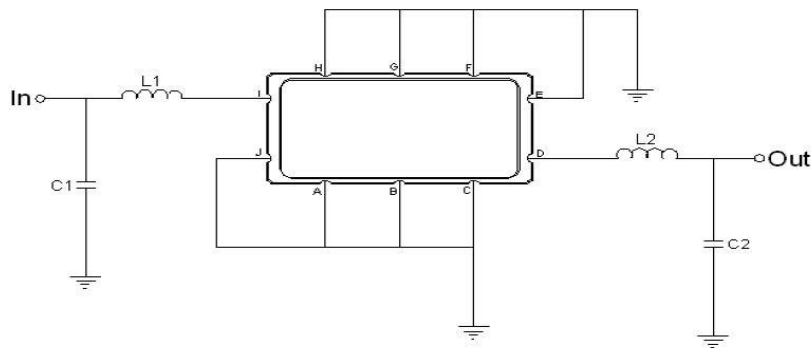


Outline Drawing:



Pin Description	
A B C D F G H I J L	Ground
K	Input
E	Output

Testing Environment:

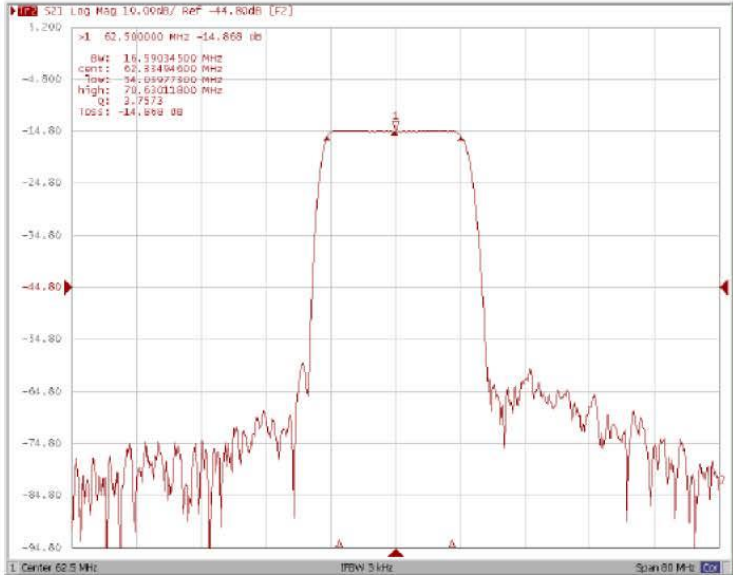


Test Fixture & Values		
Input	L1 = 180 nH,	C1 = 18 pF
Output	L2 = 180 nH,	C2 = 2.2 pF
Source/Load Impedance	50 Ω	

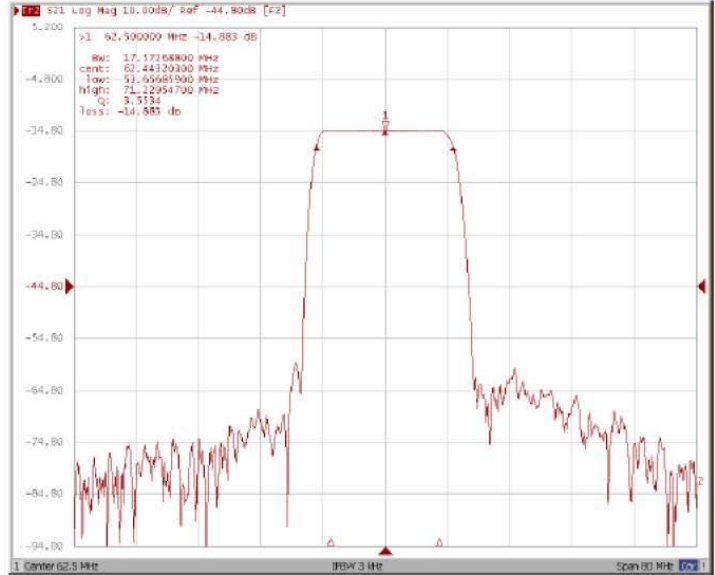


Frequency Response:

Bandwidth at -1.0 dB



Bandwidth at -3.0 dB



Bandwidth at -40.0 dB



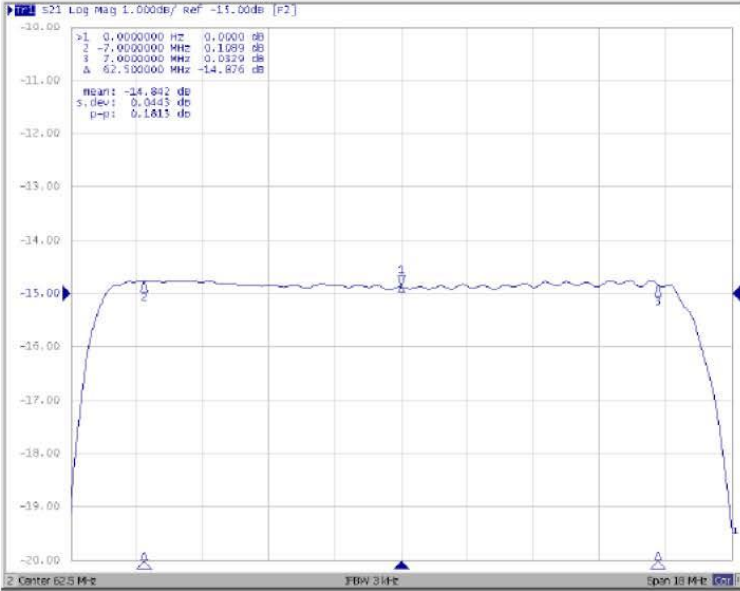
Wide-Band



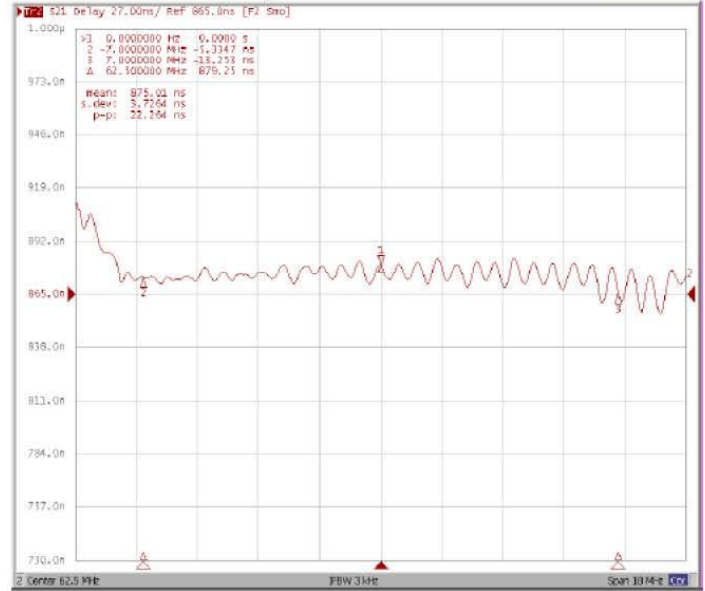


Frequency Response:

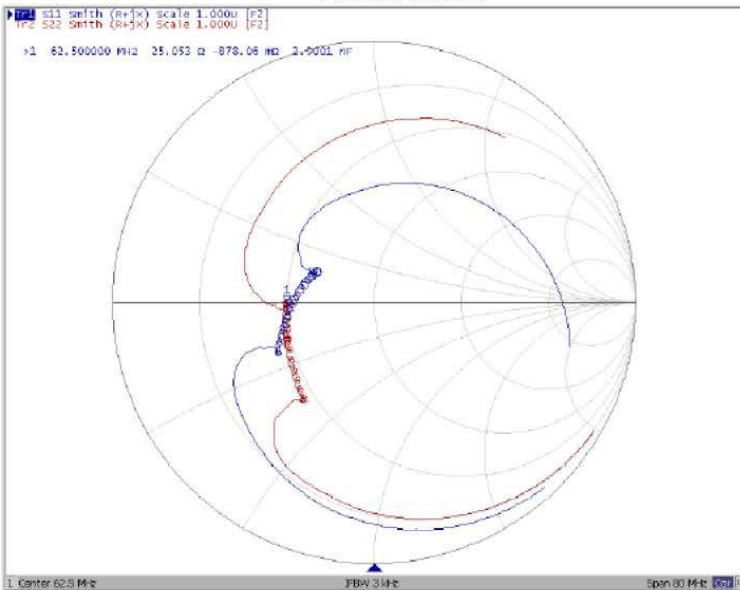
Ripple Variation at Fo ±7MHz



Group Delay Variation at Fo ±7MHz



Smith Chart



SWR

