



62.5 MHz IF Saw Filter

Part Number: AM62S788

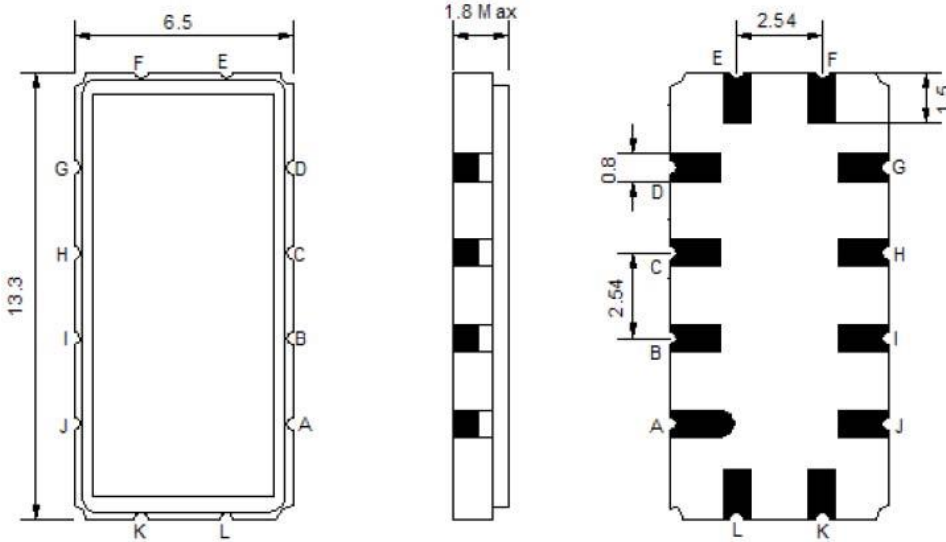


Parameters Description	Unit	Minimum	Typical	Maximum
Center Frequency (Fo)	MHz	-	62.5	-
Insertion Loss at Fo	dB	-	13.0	15.0
Temperature Coefficient	ppm/°C	-	-86	-
Amplitude Ripple within Fo ± 7.4 MHz	dBp-p	-	0.30	0.80
Group Delay Variation within Fo ± 7.4 MHz	nsec	-	30	60
Absolute Delay at Fo	µsec	-	1.04	-
Bandwidth at -1.0 dB	MHz	15.80	16.20	-
Bandwidth at -3.0 dB	MHz	-	16.98	-
Bandwidth at -40.0 dB	MHz	-	20.10	20.60
Relative Attenuation:				
Lower Sidelobe	dB	45	48	-
Upper Sidelobe	dB	45	48	-

Parameters Description	Unit	Minimum	Typical	Maximum
Operation Temperature Range	°C	-20	-	+70
Storage Temperature Range	°C	-40	-	+85
Maximum DC Voltage	V	-	-	10
Maximum Input Power	dBm	-	-	10
Source Impedance (Single Ended) ₁	Ω	-	50	-
Load Impedance (Single Ended) ₁	Ω	-	50	-
Package Size and Type	13.3 x 6.5 x 1.8 mm		V	

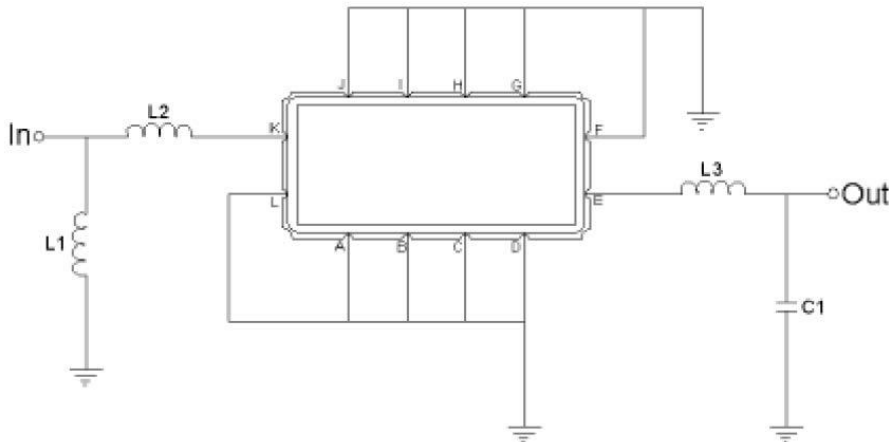


Outline Drawing:



Pin Description	
A B C D F G H I J L	Ground
K	Input
E	Output

Testing Environment:



Test Fixture & Values		
Input	L1=120nH ,	L2=8.2nH
Output	L3=150nH ,	C1=20pF
Source/Load Impedance	50 Ω	



Frequency Response:

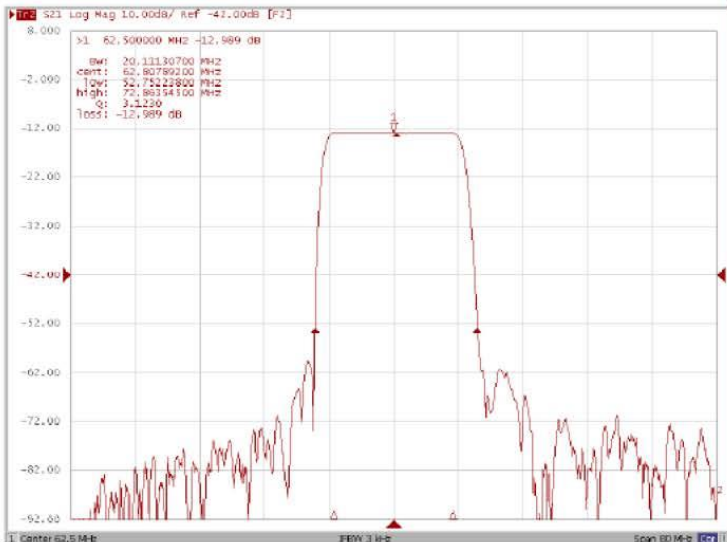
Bandwidth at -1.0 dB



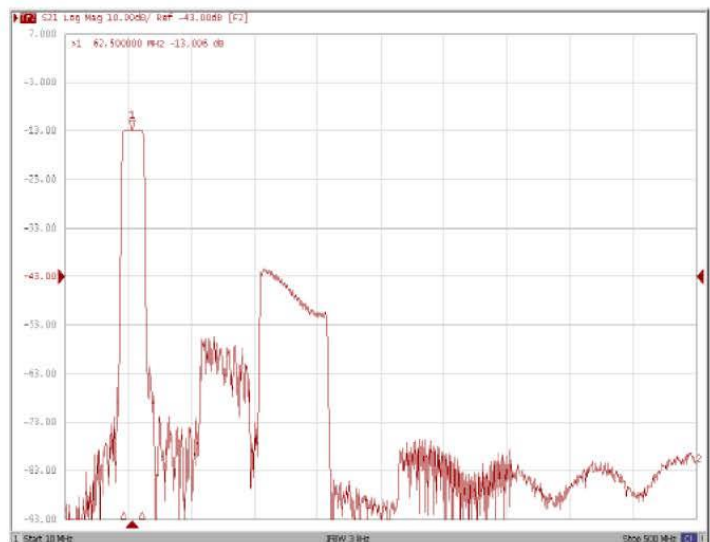
Bandwidth at -3.0 dB



Bandwidth at -40.0 dB



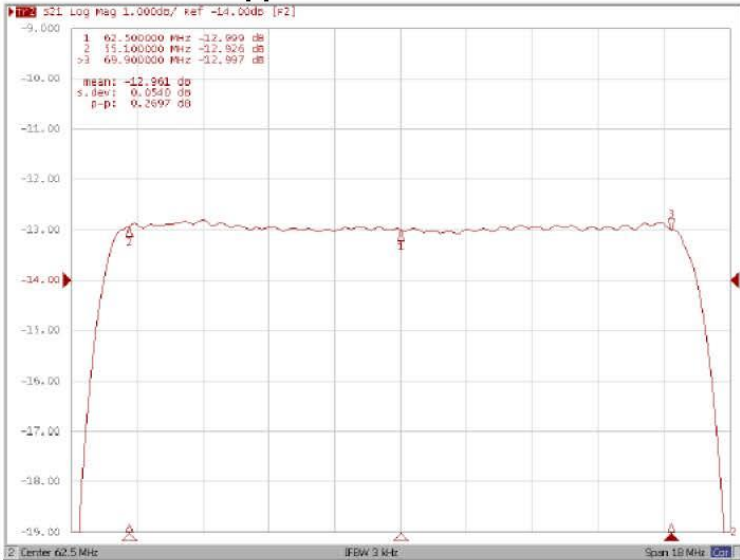
Wide-Band



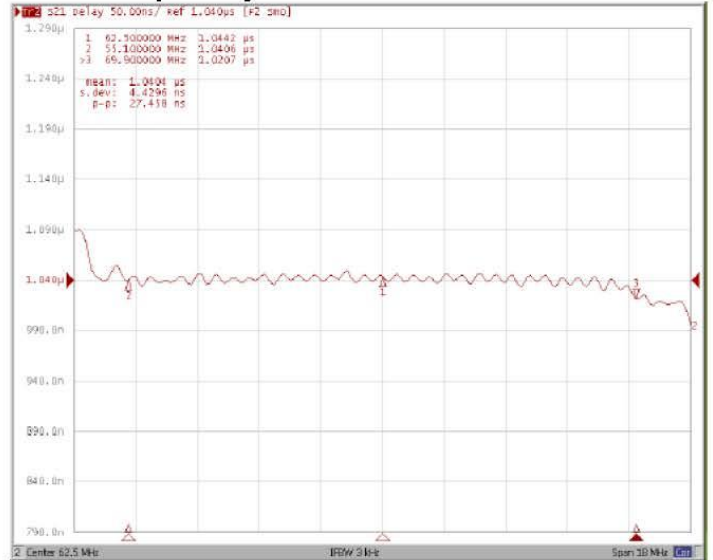


Frequency Response:

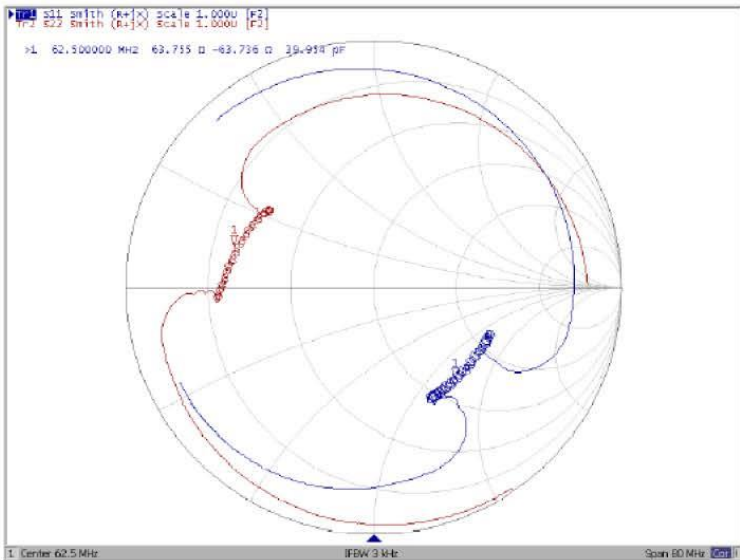
Ripple Variation Fo±7.4MHz



Group Delay Variation Fo±7.4MHz



Smith Chart



VSWR

