



ANATECH ELECTRONICS INC
RF & Microwave Filters & Products

62.5 MHz IF Saw Filter

Part Number: AM62S789

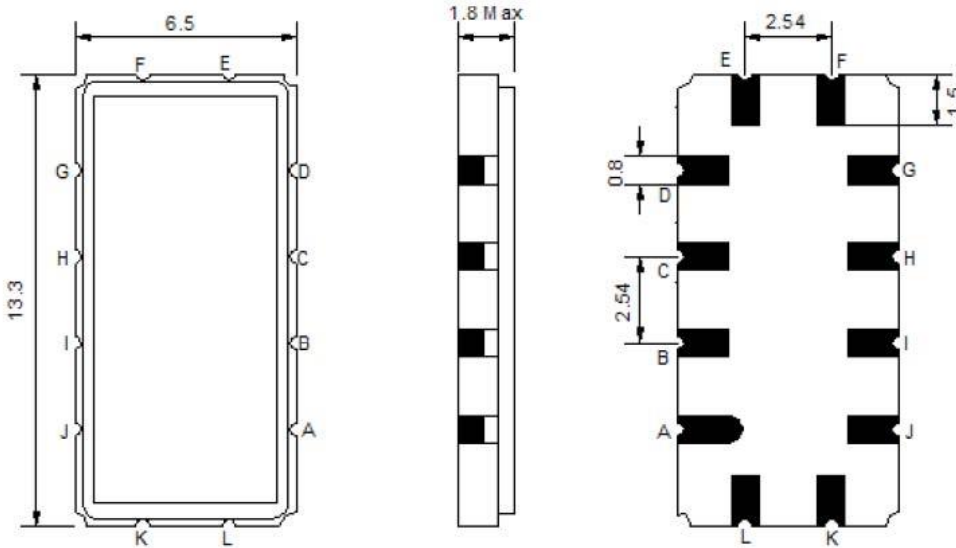


Parameters Description	Unit	Minimum	Typical	Maximum
Center Frequency (Fo)	MHz	-	62.5	-
Insertion Loss at Fo	dB	-	13.9	15.0
Temperature Coefficient	ppm/°C	-	-86	-
Amplitude Ripple within Fo ± 7.4 MHz	dBp-p	-	0.4	0.7
Group Delay Variation within Fo ± 7.4 MHz	nsec	-	35	60
Absolute Delay at Fo	µsec	-	1.11	-
Bandwidth at -1.0 dB	MHz	-	19.7	-
Bandwidth at -3.0 dB	MHz	20.2	20.3	-
Bandwidth at -40.0 dB	MHz	-	23.4	24.0
Relative Attenuation:				
Lower Sidelobe	dB	45	48	-
Upper Sidelobe	dB	45	48	-

Parameters Description	Unit	Minimum	Typical	Maximum
Operation Temperature Range	°C	-20	-	+70
Storage Temperature Range	°C	-40	-	+85
Maximum DC Voltage	V	-	-	10
Maximum Input Power	dBm	-	-	10
Source Impedance (Single Ended) ₁	Ω	-	50	-
Load Impedance (Single Ended) ₁	Ω	-	50	-
Package Size and Type	13.3 x 6.5 x 1.8 mm		V	

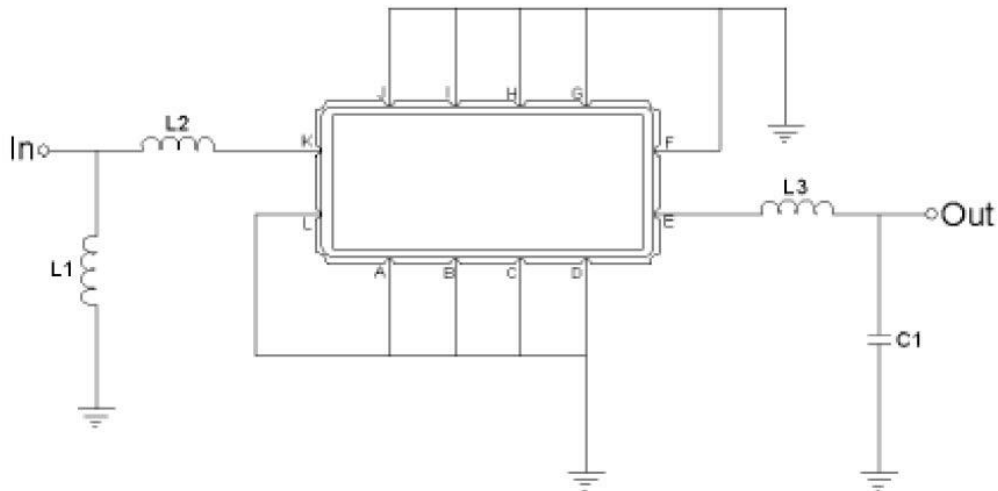


Outline Drawing:



Pin Description	
A B C D F G H I J L	Ground
K	Input
E	Output

Testing Environment:

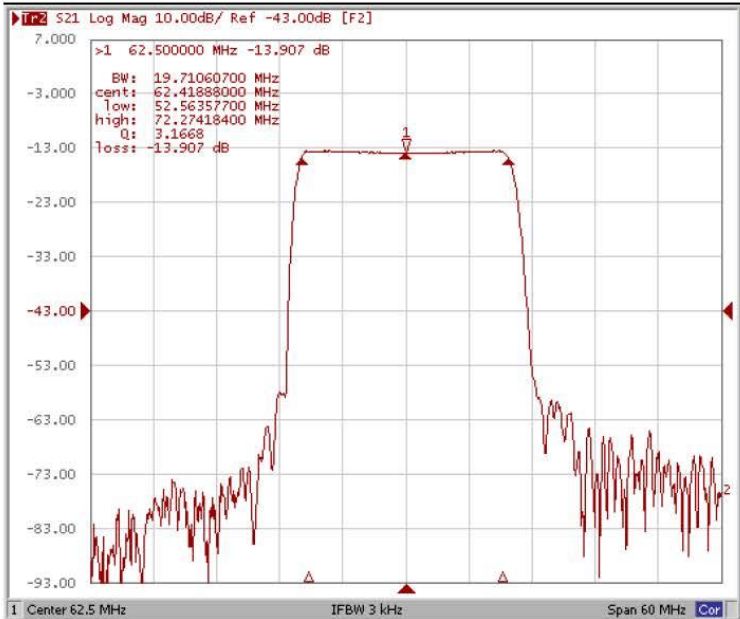


Test Fixture & Values		
Input	L1=6.8nH ,	L2=82nH
Output	L3=150nH ,	C1=22pF
Source/Load Impedance	50 Ω	

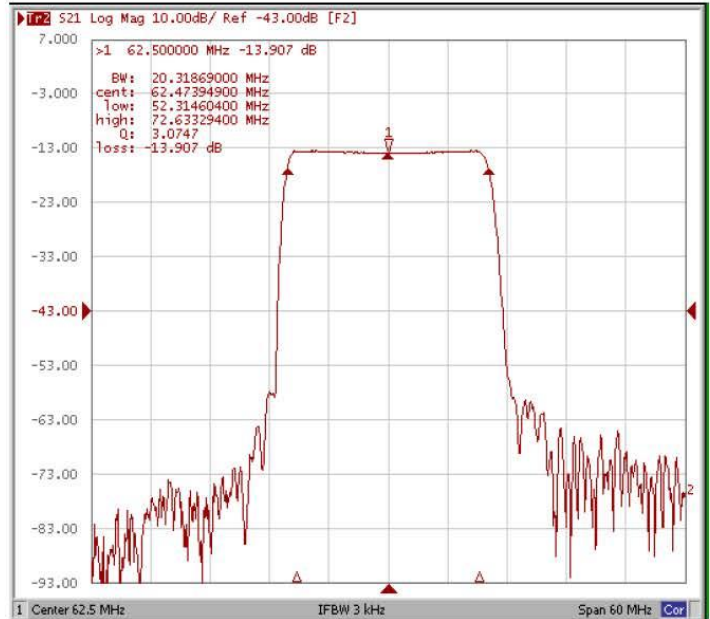


Frequency Response:

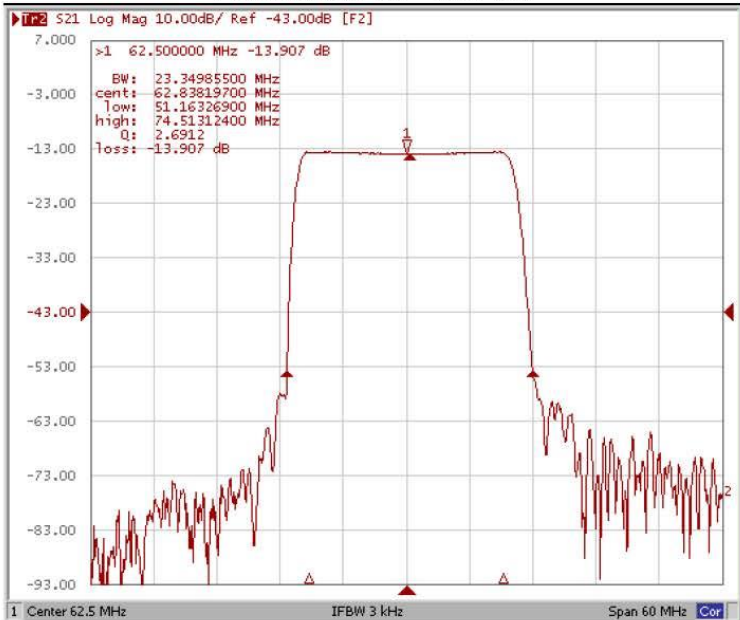
Bandwidth at -1.0 dB



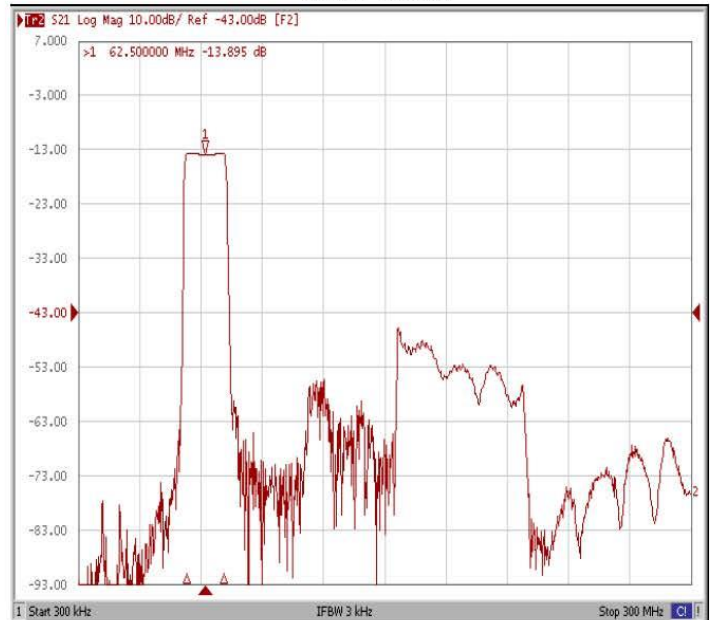
Bandwidth at -3.0 dB



Bandwidth at -40.0 dB



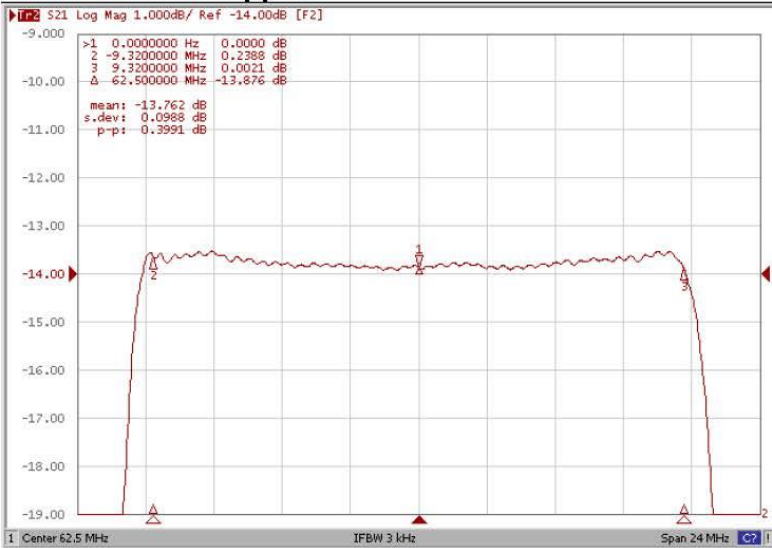
Wide-Band



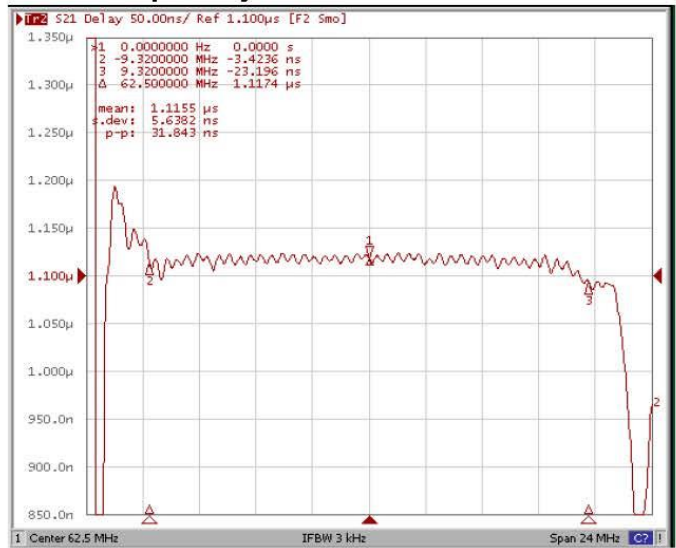


Frequency Response:

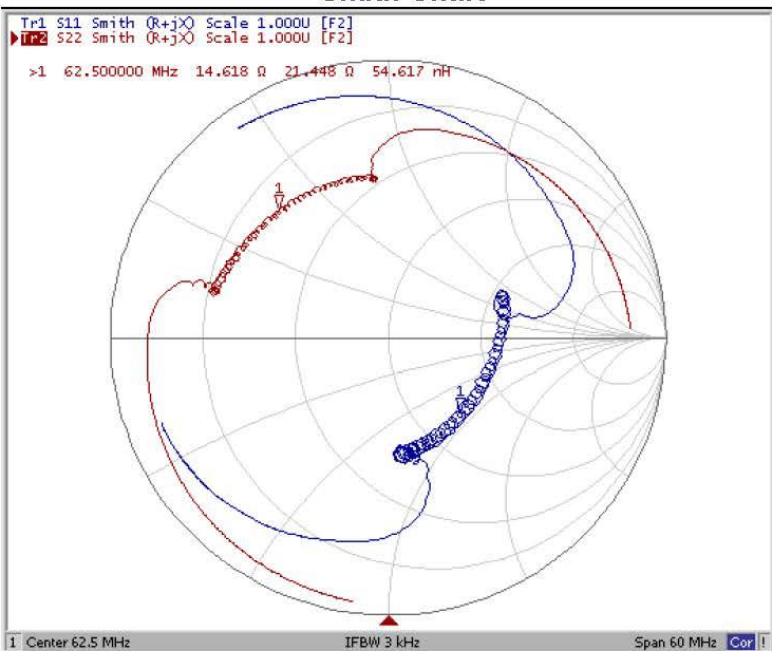
Ripple Variation Fo±9.32MHz



Group Delay Variation Fo±9.32MHz



Smith Chart



SWR

