



## 62.5 MHz IF Saw Filter

### Part Number: AM62S790

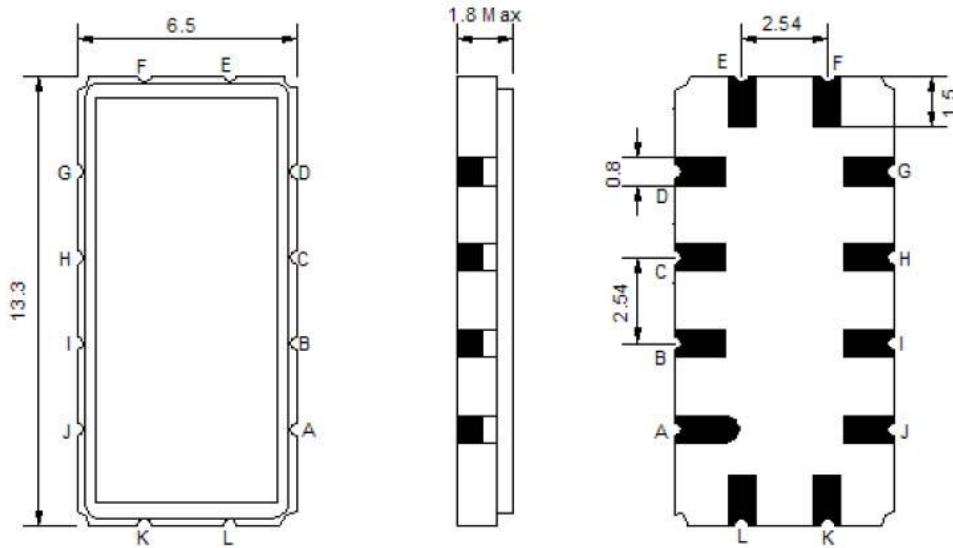


Parameters Description	Unit	Minimum	Typical	Maximum
Center Frequency (Fo)	MHz	-	62.5	-
Insertion Loss at Fo	dB	-	13.7	15.0
Temperature Coefficient	ppm/°C	-	-86	-
Amplitude Ripple within Fo ± 9.0 MHz	dBp-p	-	0.45	0.80
Group Delay Variation within Fo ± 9.0 MHz	nsec	-	35	60
Absolute Delay at Fo	µsec	-	1.12	-
Bandwidth at -1.0 dB	MHz	-	19.65	-
Bandwidth at -3.0 dB	MHz	20.10	20.27	-
Bandwidth at -40.0 dB	MHz	-	23.40	24.0
<b>Relative Attenuation:</b>				
Lower Sidelobe	dB	45	48	-
Upper Sidelobe	dB	45	48	-

Parameters Description	Unit	Minimum	Typical	Maximum
Operation Temperature Range	°C	-20	-	+70
Storage Temperature Range	°C	-40	-	+85
Maximum DC Voltage	V	-	-	10
Maximum Input Power	dBm	-	-	10
Source Impedance (Single Ended) <sub>1</sub>	Ω	-	50	-
Load Impedance (Single Ended) <sub>1</sub>	Ω	-	50	-
Package Size and Type	13.3 x 6.5 x 1.8 mm		V	

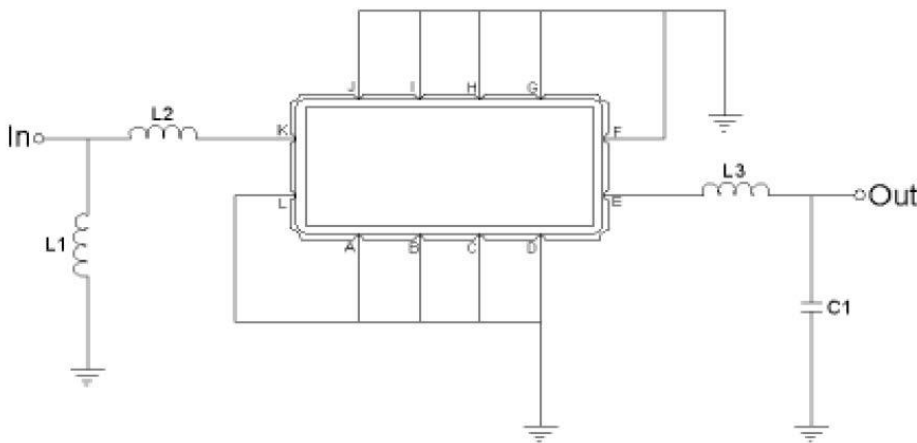


**Outline Drawing:**



Pin Description	
A B C D F G H I J L	Ground
K	Input
E	Output

**Testing Environment:**

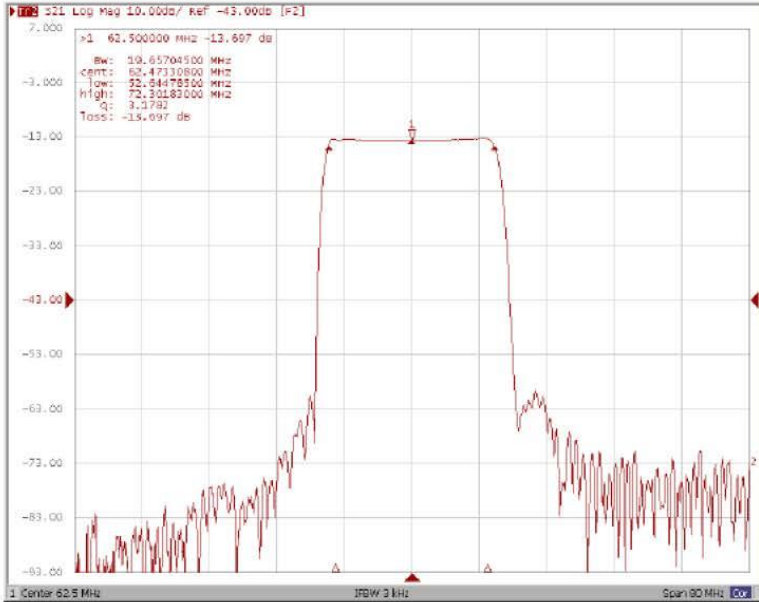


Test Fixture & Values		
Input	L1=6.8nH ,	L2=82nH
Output	L3=150nH ,	C1=22pF
Source/Load Impedance	50 Ω	

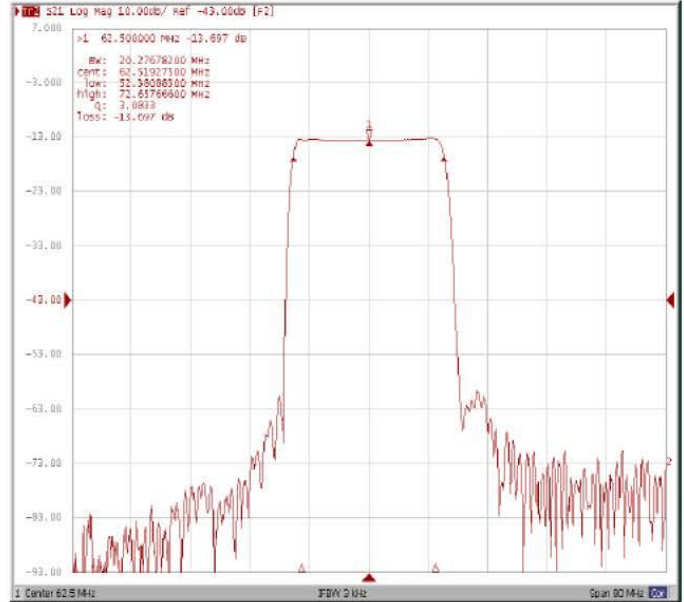


**Frequency Response:**

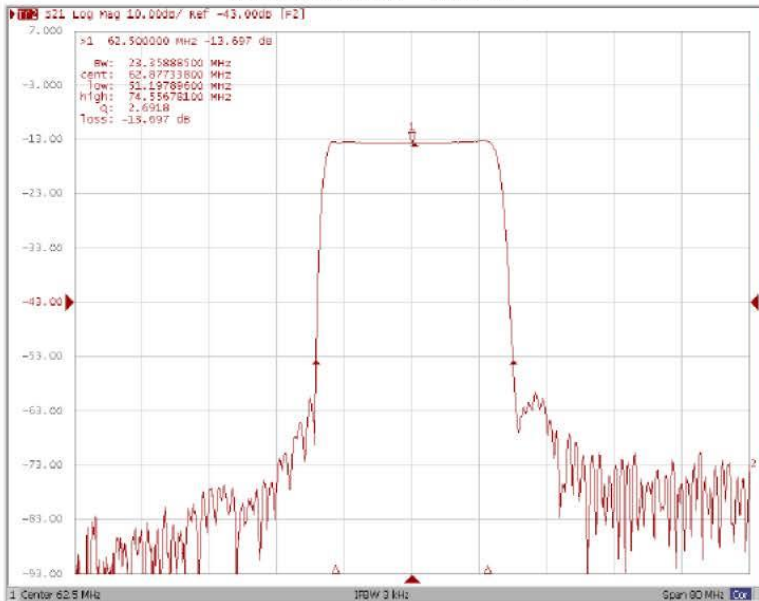
**Bandwidth at -1.0 dB**



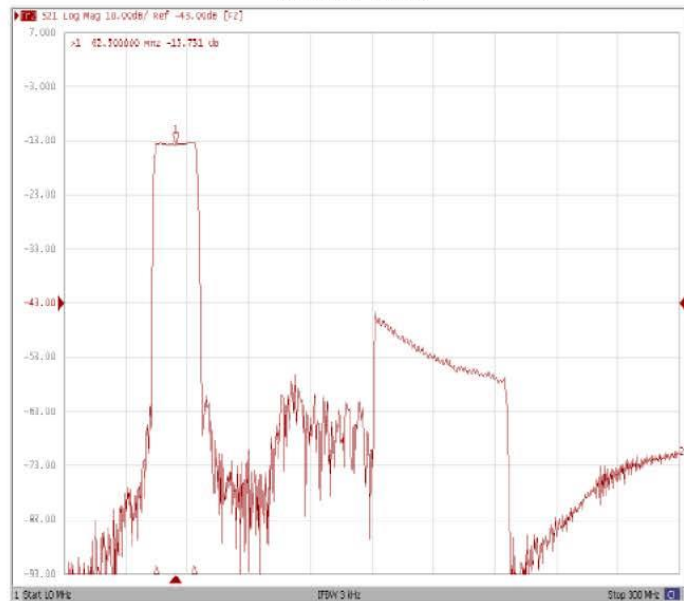
**Bandwidth at -3.0 dB**



**Bandwidth at -40.0 dB**



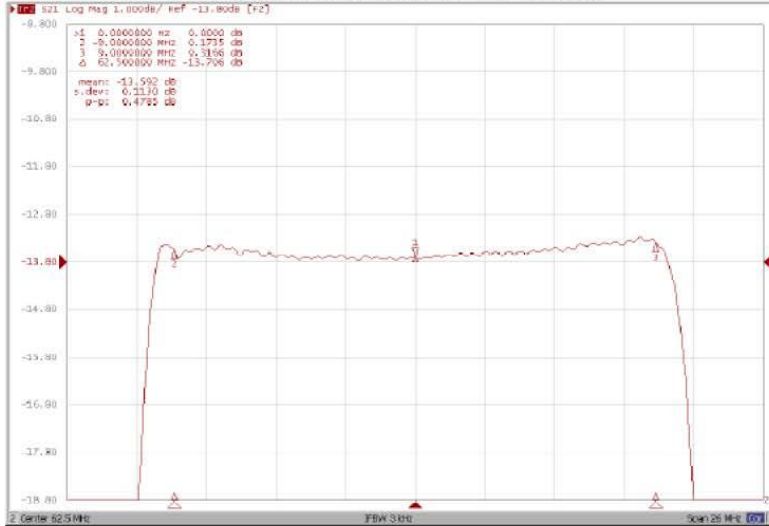
**Wide-Band**



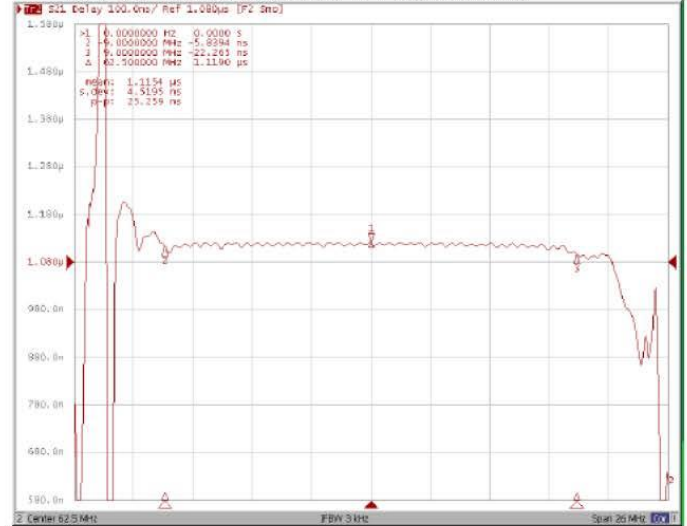


**Frequency Response:**

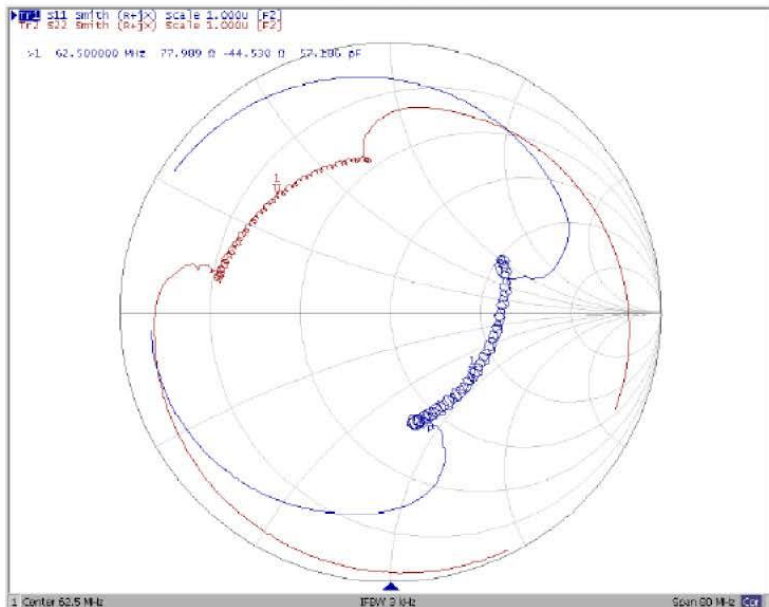
**Ripple Variation Fo±9.0MHz**



**Group Delay Variation Fo±9.0MHz**



**Smith Chart**



**SWR**

