



**62.5 MHz IF Saw Filter**  
**Part Number: AM62S791**

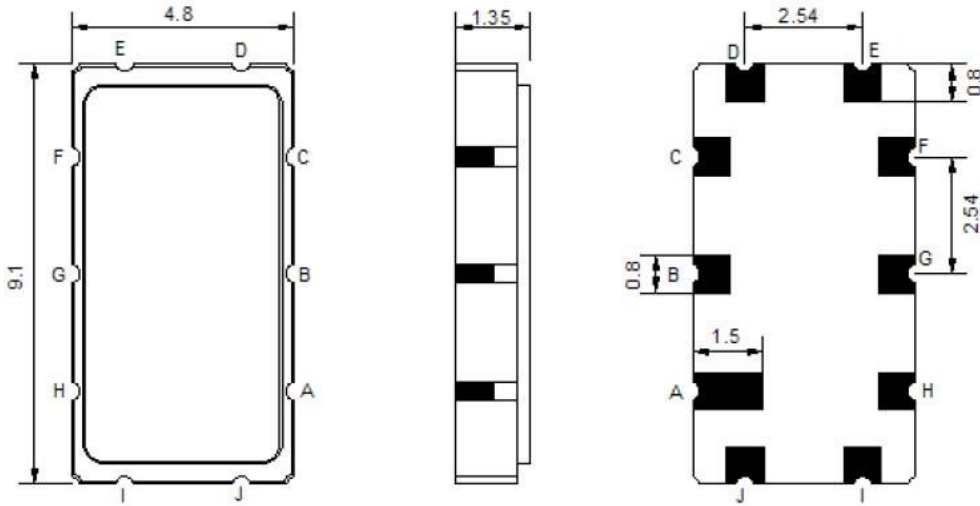


Parameters Description	Unit	Minimum	Typical	Maximum
Center Frequency (Fo)	MHz	-	62.5	-
Insertion Loss at Fo	dB	-	20.50	22.0
Passband Ripple within Fo ± 9.22 MHz	dB	-	0.50	1.0
Group Delay Variation within Fo ± 9.22 MHz	nsec	-	30	80
Absolute Delay at Fo	µsec	-	1.01	-
Bandwidth at -1.0 dB	MHz	19.50	19.62	-
Bandwidth at -3.0 dB	MHz	-	20.44	-
Bandwidth at -5.0 dB	MHz	-	20.94	-
Bandwidth at -40.0 dB	MHz	-	25.20	25.80
<b>Relative Attenuation:</b>				
Lower Sidelobe	dB	40	45	-
Upper Sidelobe	dB	40	45	-

Parameters Description	Unit	Minimum	Typical	Maximum
Operation Temperature Range	°C	-30	-	+60
Storage Temperature Range	°C	-40	-	+85
Maximum DC Voltage	V	-	-	10
Maximum Input Power	dBm	-	-	10
Source Impedance (Single Ended) <sub>1</sub>	Ω	-	50	-
Load Impedance (Single Ended) <sub>1</sub>	Ω	-	50	-
Package Size and Type	9.1 x 4.8 x 1.5 mm		T	

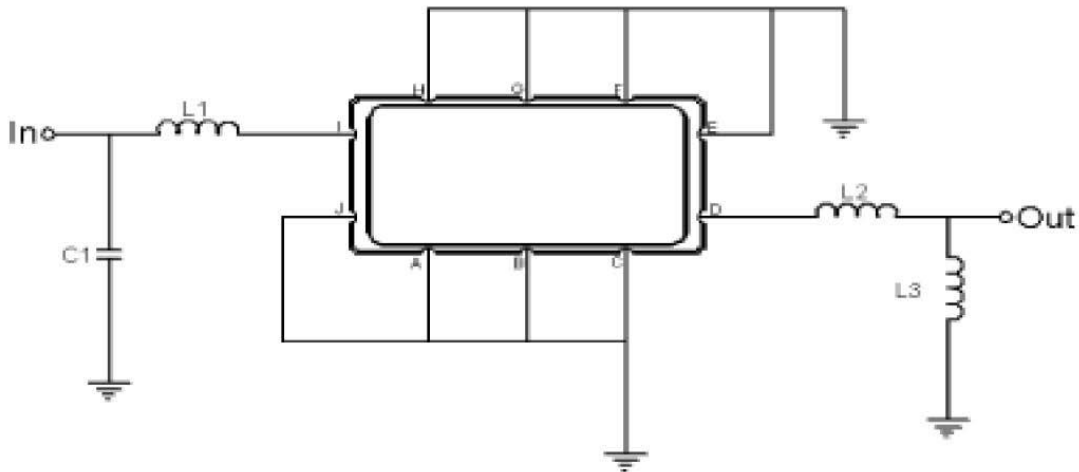


**Outline Drawing:**



Pin Description	
A B C E F G H J	Ground
I	Input
D	Output

**Testing Environment:**

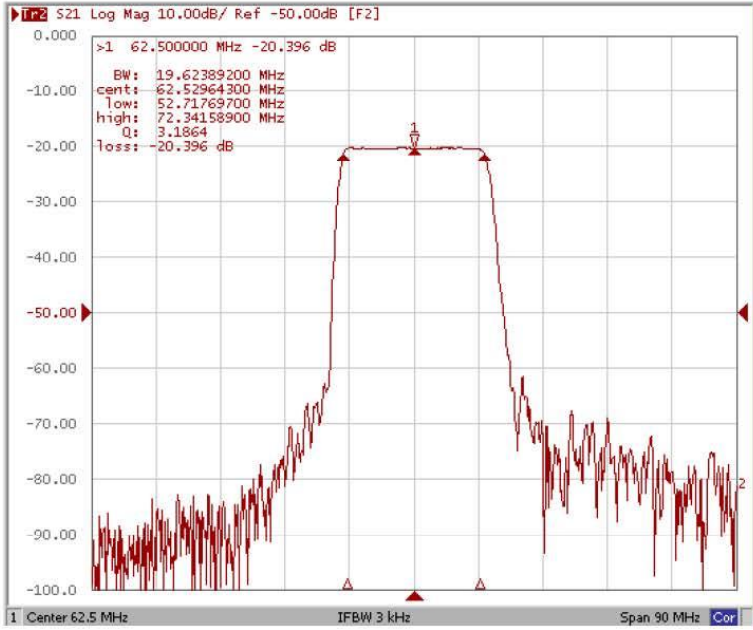


Test Fixture & Values		
<b>Input</b>	L1 = 180 nH,	C1 = 33 pF
<b>Output</b>	L2 = 39 nH,	C2 = 68 pF
<b>Source/Load Impedance</b>	50 Ω	

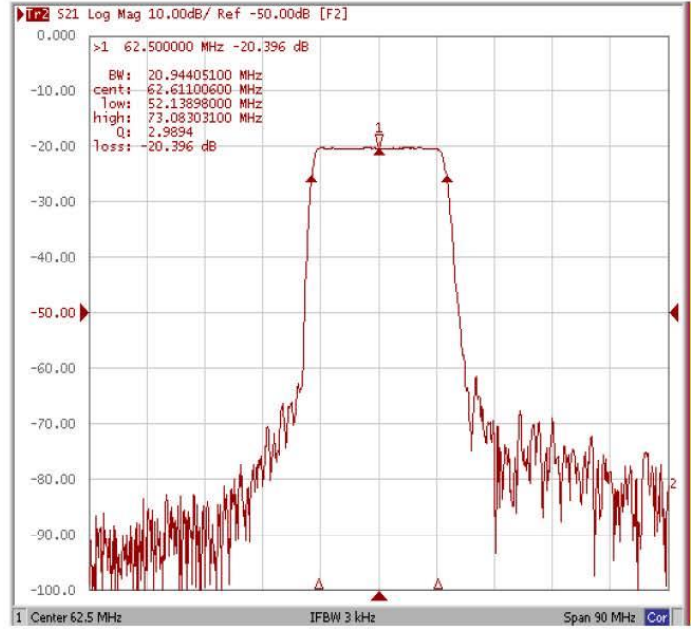


**Frequency Response:**

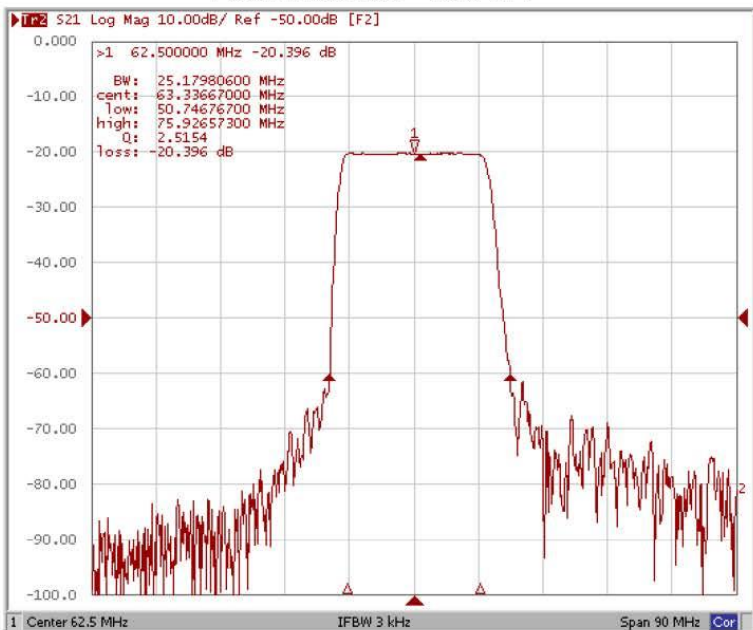
**Bandwidth at -1.0 dB**



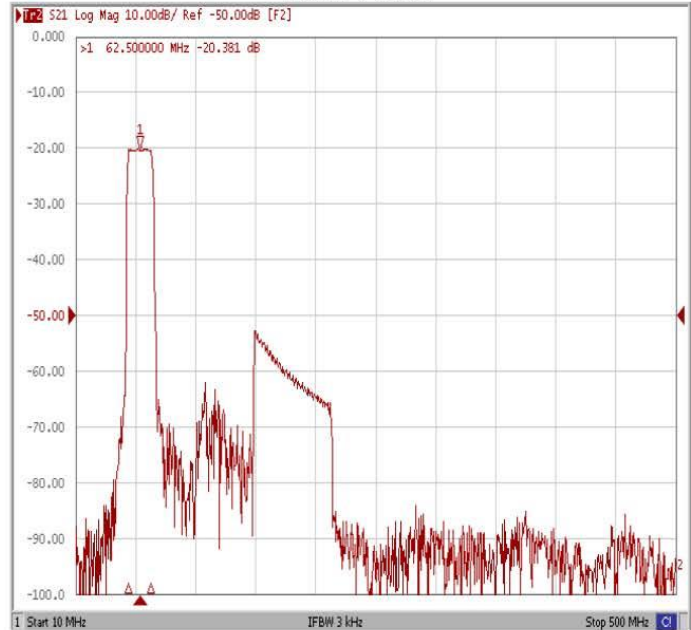
**Bandwidth at -5.0 dB**



**Bandwidth at -40.0 dB**



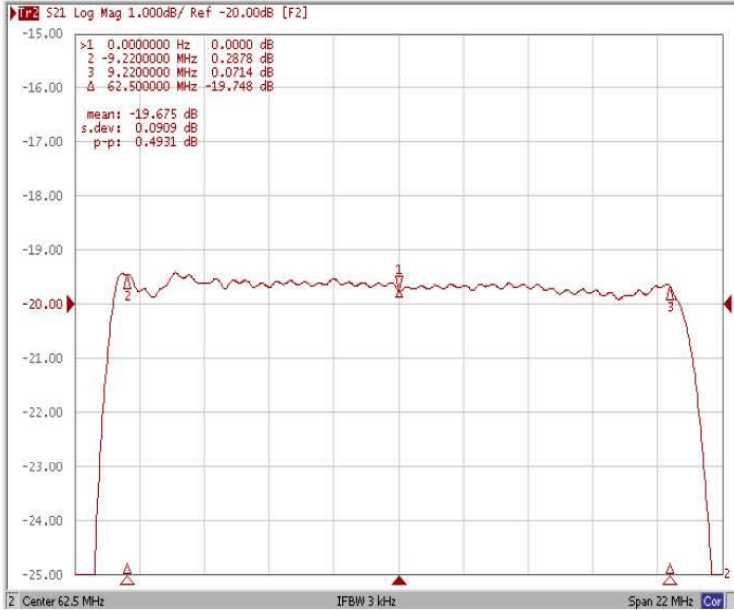
**Wide-Band**



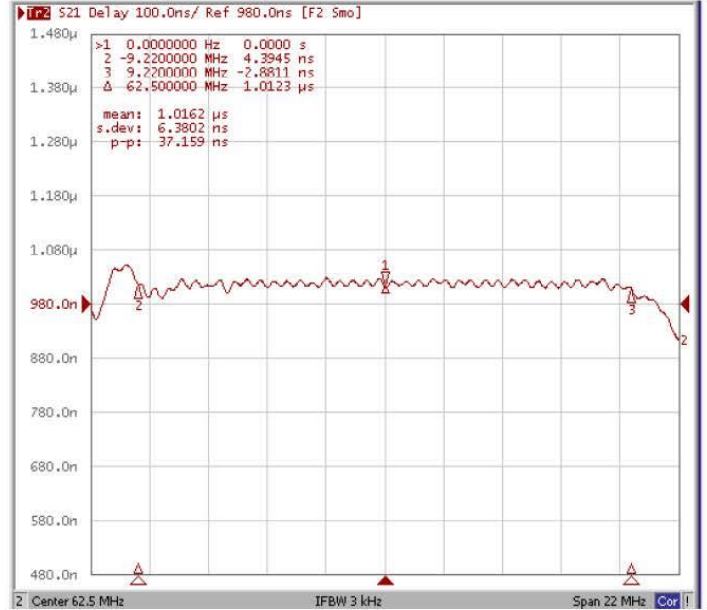


**Frequency Response:**

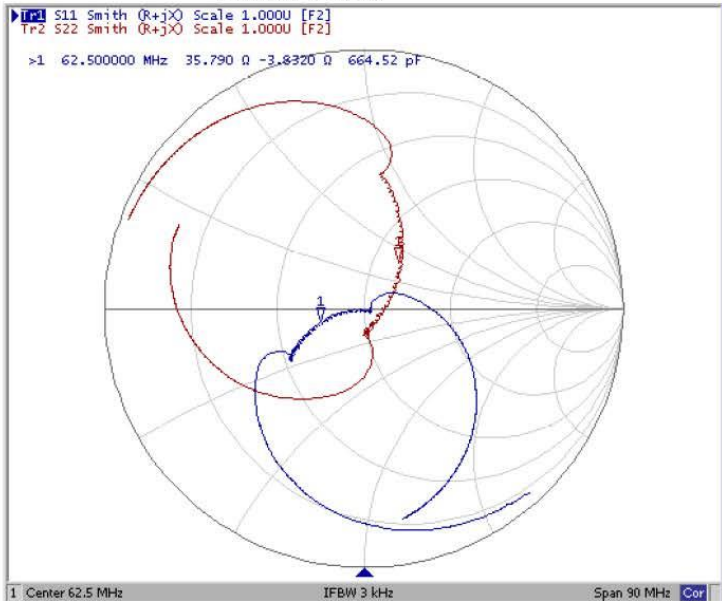
**Ripple Variation at Fo ±9.22MHz**



**Group Delay Variation at Fo ±9.22MHz**



**Smith Chart**



**SWR**

